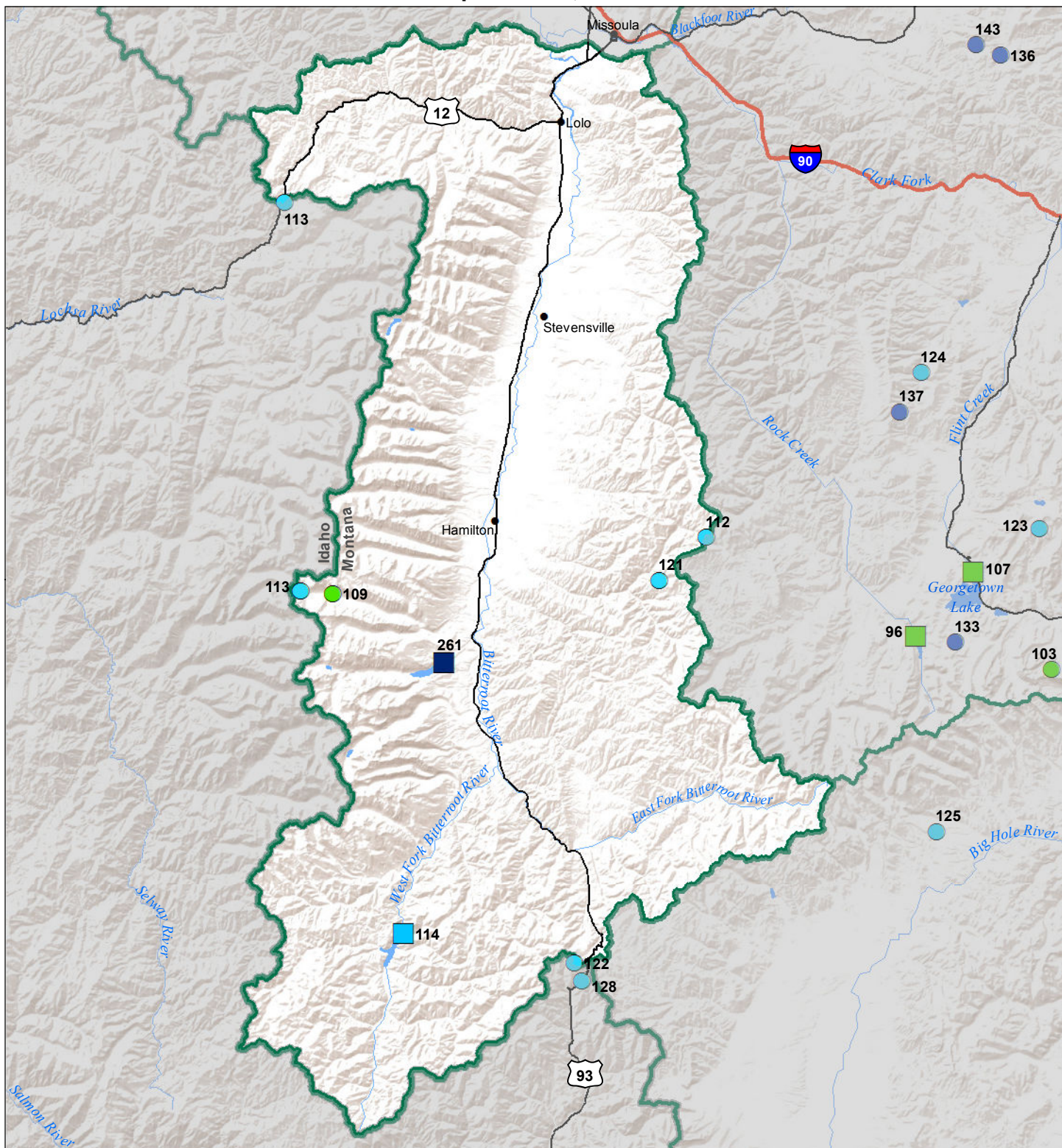


Bitterroot River Basin

Water Year to Date Precipitation and Reservoir Levels Percentage of Normal

September 1, 2018



| Precipitation Percent of Normal | |
|------------------------------------|--------------|
| SNOTEL | COOP/ACIS |
| ● > 150% | ● > 150% |
| ● 131 - 150% | ● 131 - 150% |
| ● 111 - 130% | ● 111 - 130% |
| ● 91 - 110% | ● 91 - 110% |
| ● 71 - 90% | ● 71 - 90% |
| ● 51 - 70% | ● 51 - 70% |
| ● 1 - 50% | ● 1 - 50% |

| Reservoirs Percent of Normal |
|---------------------------------|
| ■ > 150% |
| ■ 131 - 150% |
| ■ 111 - 130% |
| ■ 91 - 110% |
| ■ 71 - 90% |
| ■ 51 - 70% |
| ■ 1 - 50% |

USDA Montana State University Natural Resource Information System