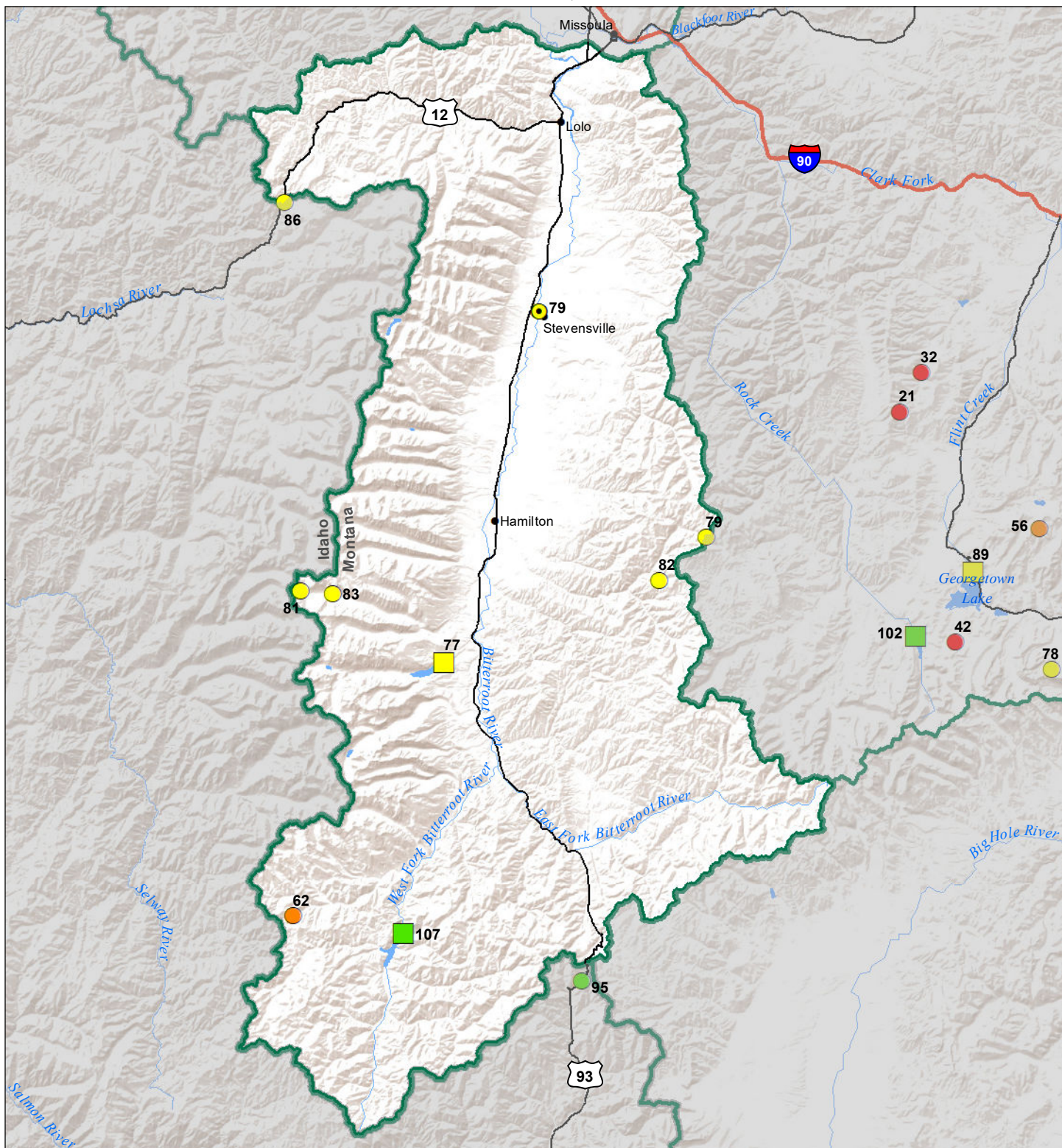


# Bitterroot River Basin

## Water Year to Date Precipitation and Reservoir Levels Percentage of Normal

### November 1, 2021



| Precipitation<br>Percent of Normal |            |              |            |
|------------------------------------|------------|--------------|------------|
| SNOTEL                             |            | COOP/ACIS    |            |
| ● > 150%                           | ● 71 - 90% | ● > 150%     | ● 71 - 90% |
| ● 131 - 150%                       | ● 51 - 70% | ● 131 - 150% | ● 51 - 70% |
| ● 111 - 130%                       | ● 1 - 50%  | ● 111 - 130% | ● 1 - 50%  |
| ● 91 - 110%                        |            | ● 91 - 110%  |            |

| Reservoirs<br>Percent of Normal |  |
|---------------------------------|--|
| ■ > 150%                        |  |
| ■ 131 - 150%                    |  |
| ■ 111 - 130%                    |  |
| ■ 91 - 110%                     |  |
| ■ 71 - 90%                      |  |
| ■ 51 - 70%                      |  |
| ■ 1 - 50%                       |  |

USDA  
Montana State Library  
Natural Resource  
Information System