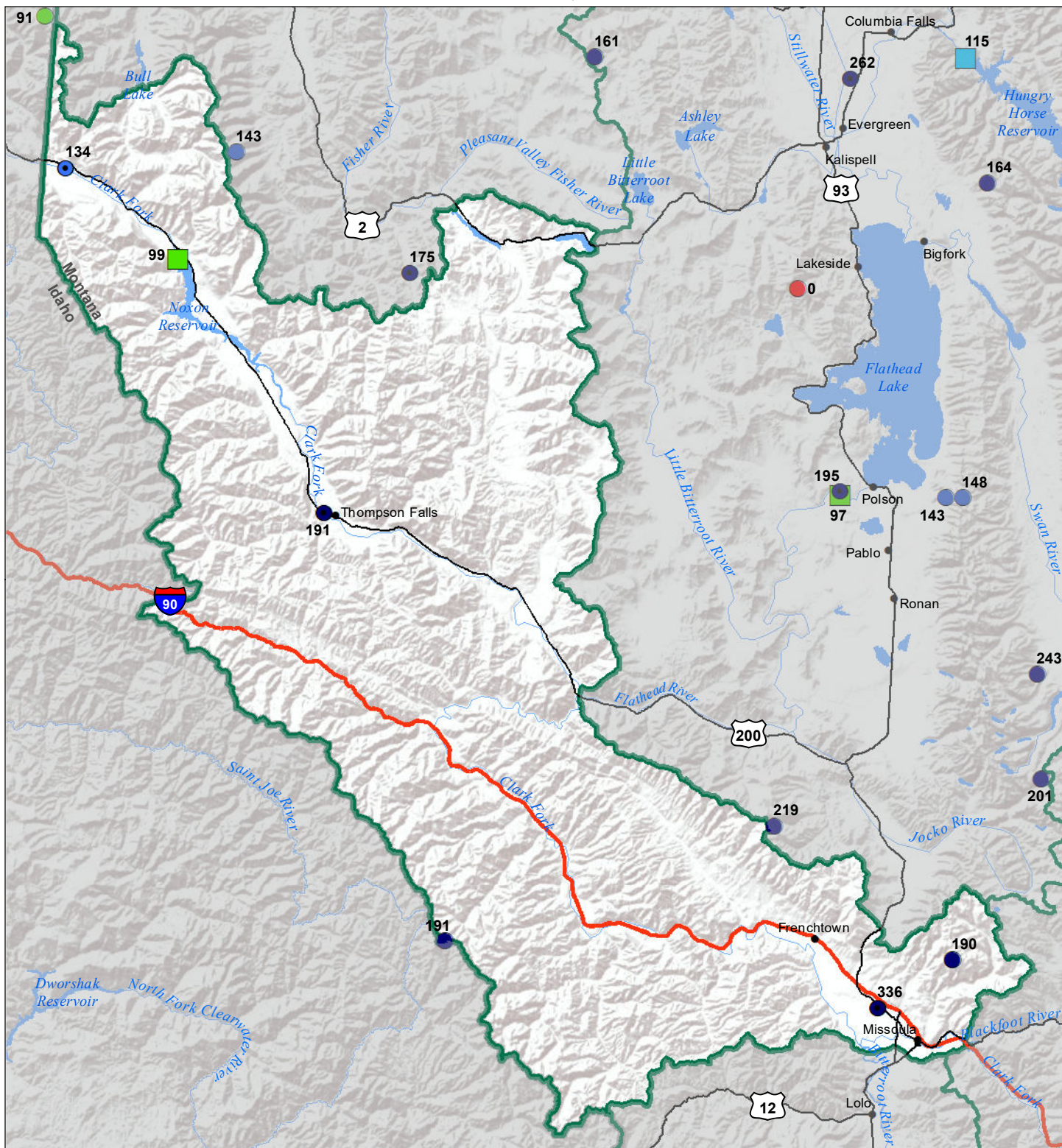


Lower Clark Fork River Basin

Water Year to Date Precipitation and Reservoir Levels Percentage of Normal

November 1, 2020



| Precipitation Percent of Normal | | COOP/ACIS | |
|---------------------------------|------------|--------------|------------|
| SNOTEL | | | |
| ● > 150% | ● 71 - 90% | ● > 150% | ● 71 - 90% |
| ● 131 - 150% | ● 51 - 70% | ● 131 - 150% | ● 51 - 70% |
| ● 111 - 130% | ● 1 - 50% | ● 111 - 130% | ● 1 - 50% |
| ● 91 - 110% | | ● 91 - 110% | |

| Reservoirs Percent of Normal | |
|------------------------------|--------------|
| ■ > 150% | ■ 131 - 150% |
| ■ 111 - 130% | ■ 91 - 110% |
| ■ 71 - 90% | ■ 51 - 70% |
| ■ 1 - 50% | |

USDA Montana State University Natural Resource Information System