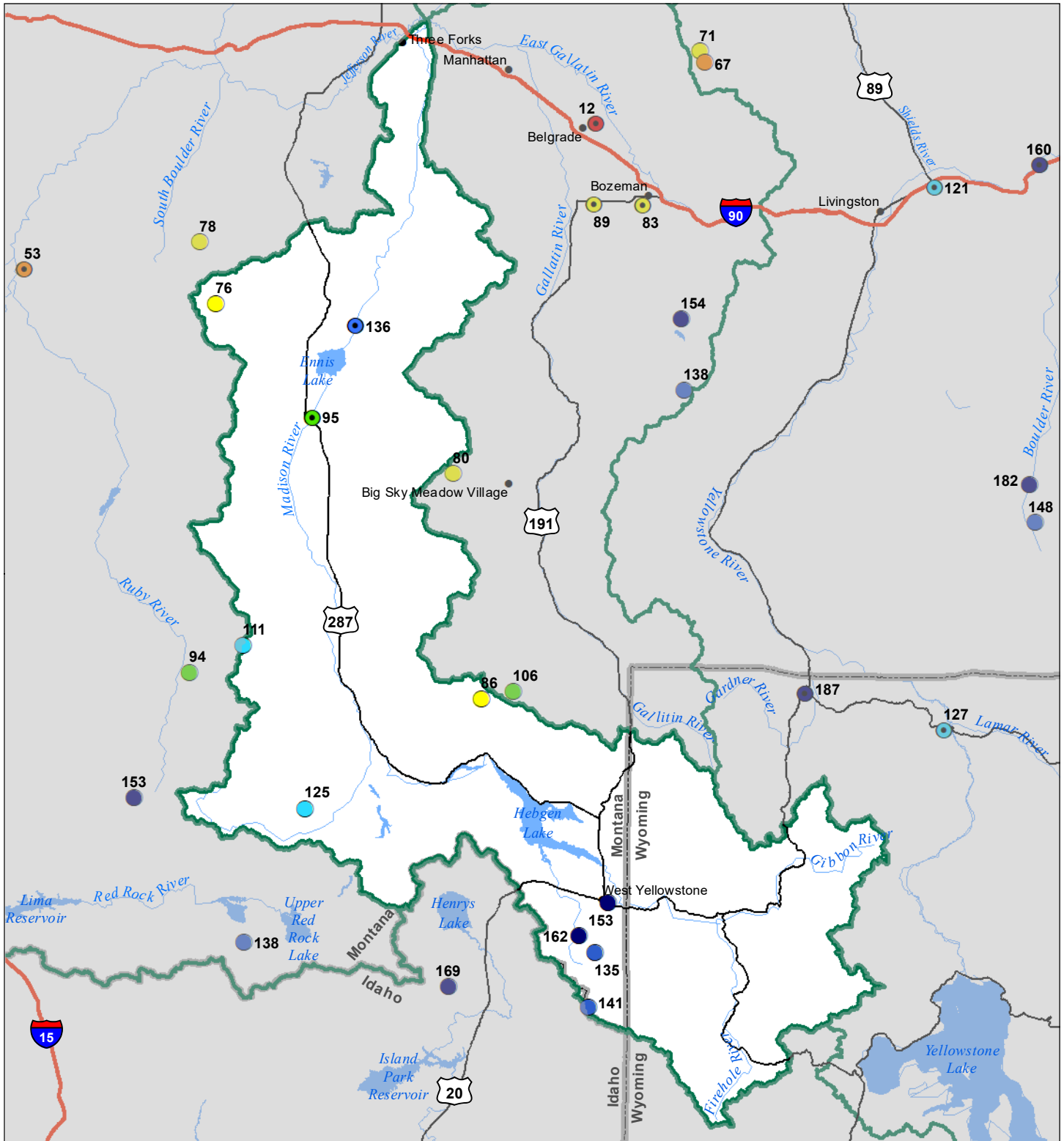


# Madison River Basin

## Water Year to Date Precipitation and Reservoir Levels Percentage of Normal

### November 1, 2023



#### Precipitation Percent of Normal

SNOTEL		COOP/ACIS	
<span style="color: blue;">●</span> > 150%	<span style="color: yellow;">●</span> 71 - 90%	<span style="color: blue;">●</span> > 150%	<span style="color: yellow;">●</span> 71 - 90%
<span style="color: lightblue;">●</span> 131 - 150%	<span style="color: orange;">●</span> 51 - 70%	<span style="color: lightblue;">●</span> 131 - 150%	<span style="color: orange;">●</span> 51 - 70%
<span style="color: cyan;">●</span> 111 - 130%	<span style="color: red;">●</span> 1 - 50%	<span style="color: cyan;">●</span> 111 - 130%	<span style="color: red;">●</span> 1 - 50%
<span style="color: green;">●</span> 91 - 110%		<span style="color: green;">●</span> 91 - 110%	

#### Reservoirs Percent of Normal

<span style="color: darkblue;">■</span> > 150%
<span style="color: blue;">■</span> 131 - 150%
<span style="color: lightblue;">■</span> 111 - 130%
<span style="color: cyan;">■</span> 91 - 110%
<span style="color: yellow;">■</span> 71 - 90%
<span style="color: orange;">■</span> 51 - 70%
<span style="color: red;">■</span> 1 - 50%

