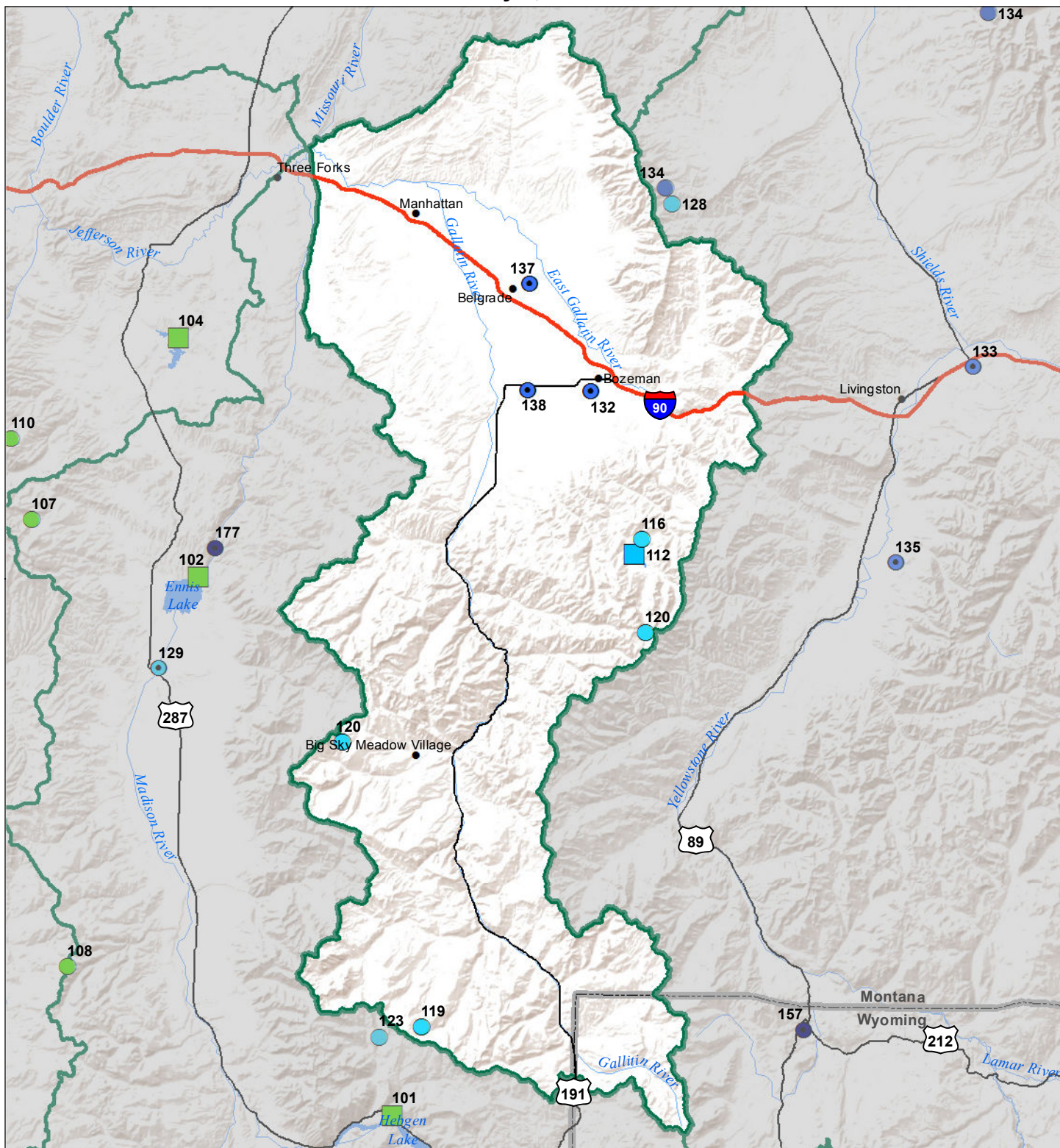


Gallatin River Basin Water Year to Date Precipitation and Reservoir Levels Percentage of Normal July 1, 2018



Precipitation Percent of Normal

SNOTEL		COOP/ACIS	
● > 150%	■ 71 - 90%	● > 150%	■ 71 - 90%
● 131 - 150%	■ 51 - 70%	● 131 - 150%	■ 51 - 70%
● 111 - 130%	■ 1 - 50%	● 111 - 130%	■ 1 - 50%
● 91 - 110%		● 91 - 110%	

Reservoirs Percent of Normal

● > 150%
● 131 - 150%
● 111 - 130%
● 91 - 110%
● 71 - 90%
● 51 - 70%
● 1 - 50%

