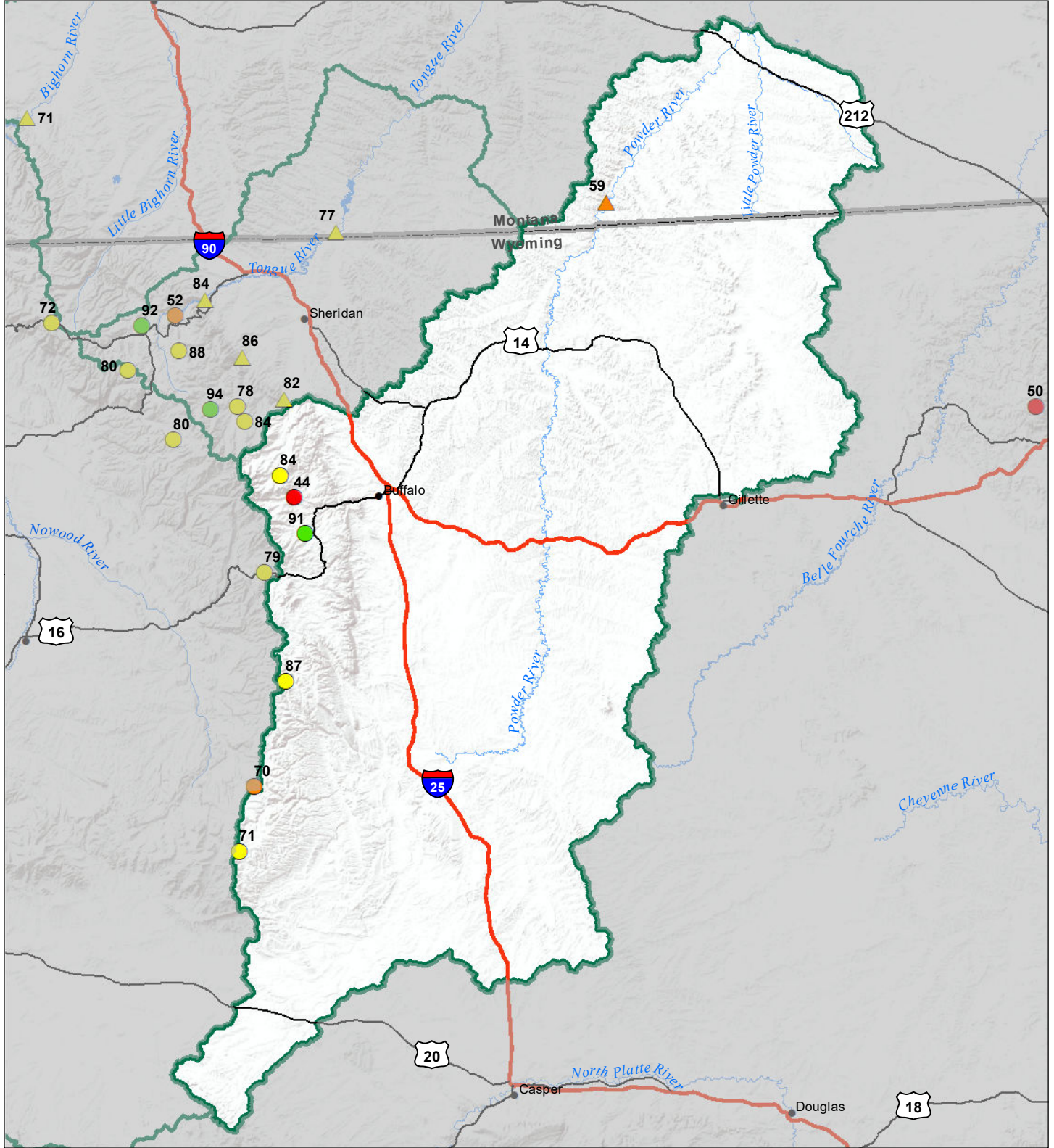


Powder River Basin Streamflow Forecast, Snow Water Equivalent Percentage of Normal April 1, 2022



Snow Water Equivalent Percent of Normal

SNOTEL

- > 150%
- 131 - 150%
- 111 - 130%
- 91 - 110%
- 71 - 90%
- 51 - 70%
- 1 - 50%
- * 0%

Snowcourse

- + > 150%
- + 131 - 150%
- + 111 - 130%
- + 91 - 110%
- + 71 - 90%
- + 51 - 70%
- + 1 - 50%
- * 0%

Streamflow Forecast Percent of Average Flows

- ▲ > 150
- ▲ 131 - 150%
- ▲ 111 - 130%
- ▲ 91 - 110%
- ▲ 71 - 90%
- ▲ 51 - 70%
- ▲ 5 - 50%

