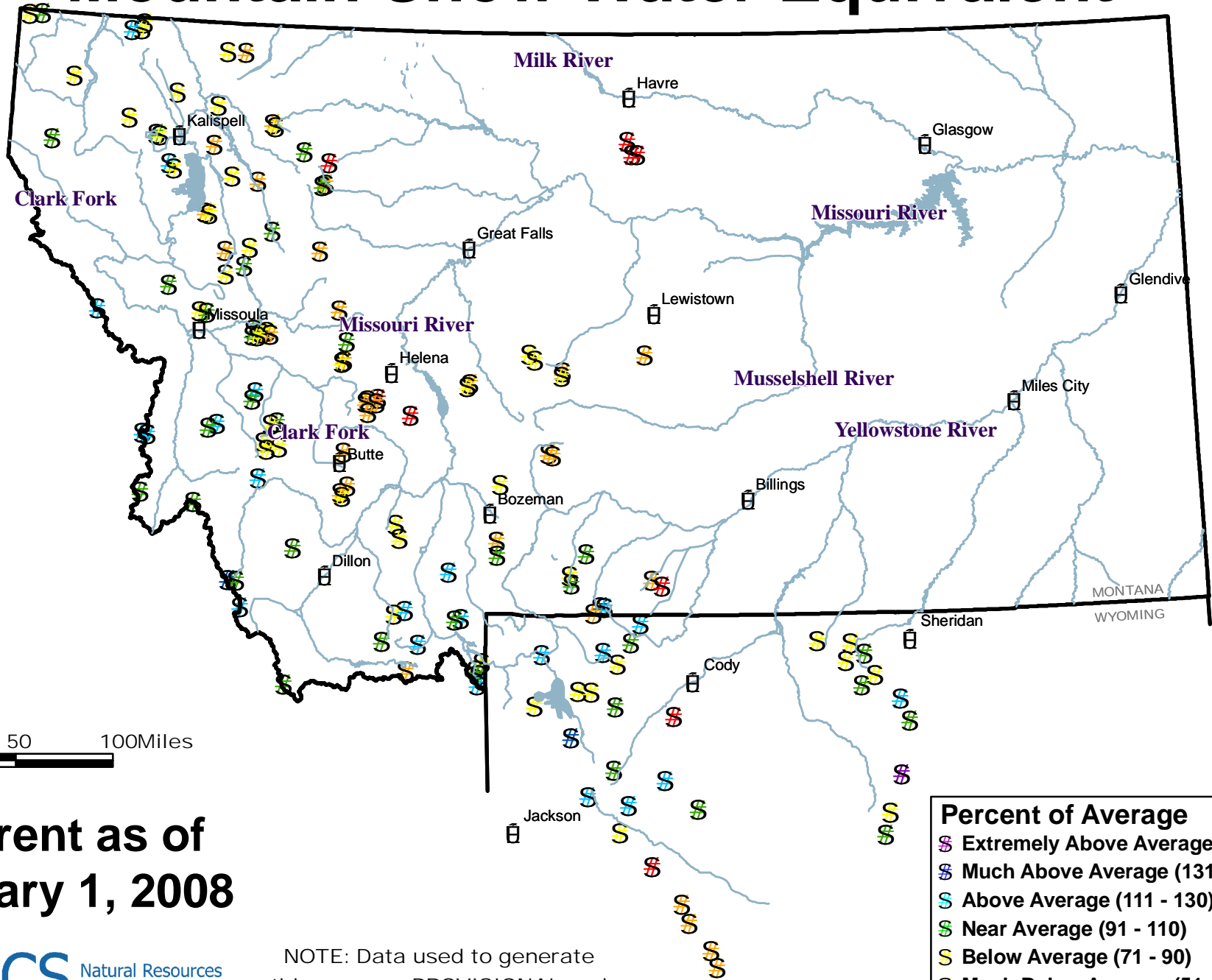


# Mountain Snow Water Equivalent



0 50 100 Miles

**Current as of  
January 1, 2008**

**NRCS** Natural Resources  
Conservation Service  
<http://www.mt.nrcs.usda.gov>

NOTE: Data used to generate  
this map are PROVISIONAL and  
SUBJECT TO CHANGE.

Percent of Average	
Ⓢ	Extremely Above Average (Over 150)
Ⓞ	Much Above Average (131 - 150)
Ⓜ	Above Average (111 - 130)
Ⓝ	Near Average (91 - 110)
Ⓟ	Below Average (71 - 90)
Ⓠ	Much Below Average (51 - 70)
Ⓡ	Extremely Below Average (Below 51)