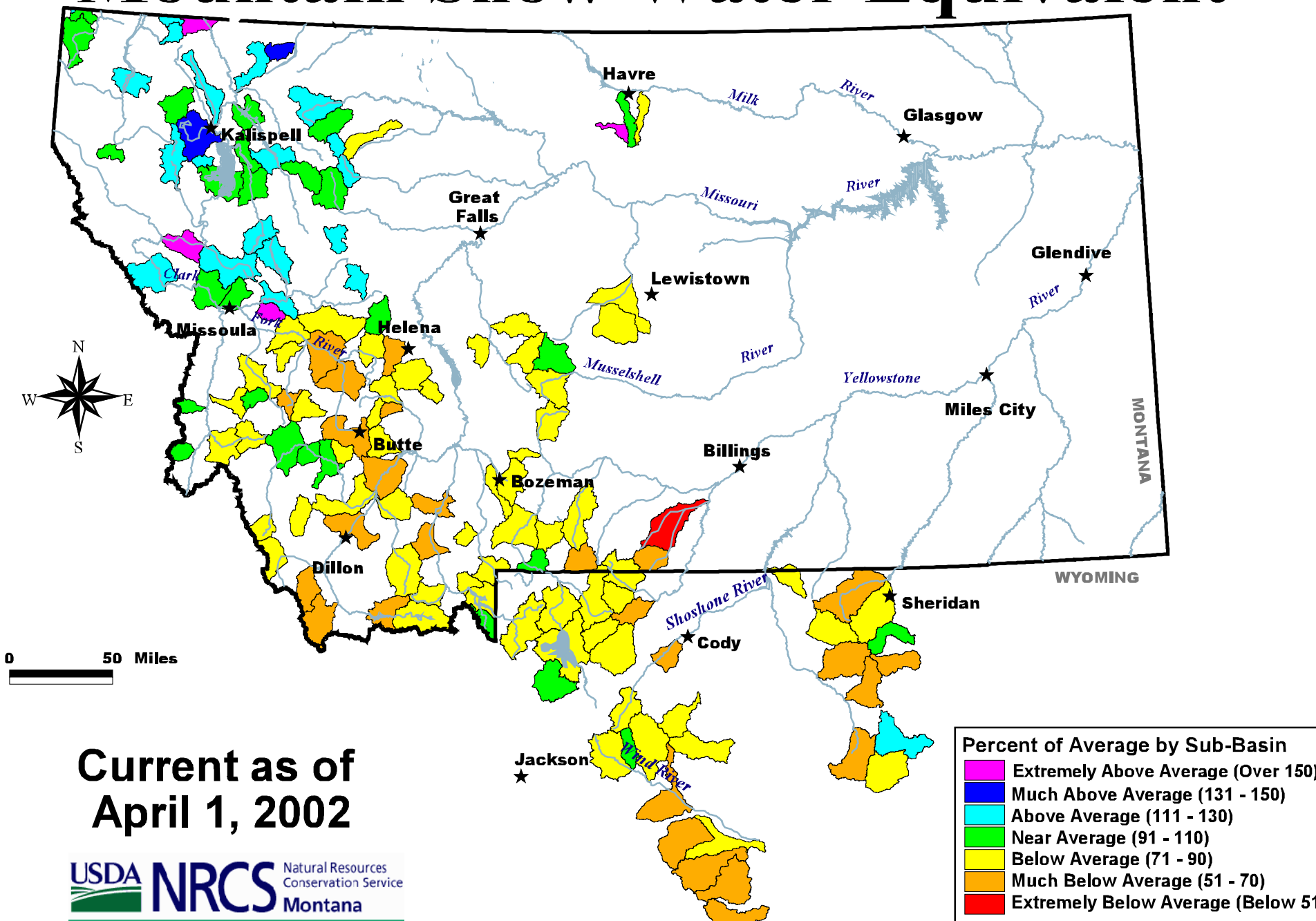


Mountain Snow Water Equivalent



0 50 Miles

Current as of
April 1, 2002



<http://www.mt.nrcs.usda.gov>

NOTE: Data used to generate this map are **PROVISIONAL** and **SUBJECT TO CHANGE.**

| Percent of Average by Sub-Basin | |
|--|------------------------------------|
| ■ | Extremely Above Average (Over 150) |
| ■ | Much Above Average (131 - 150) |
| ■ | Above Average (111 - 130) |
| ■ | Near Average (91 - 110) |
| ■ | Below Average (71 - 90) |
| ■ | Much Below Average (51 - 70) |
| ■ | Extremely Below Average (Below 51) |