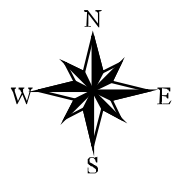
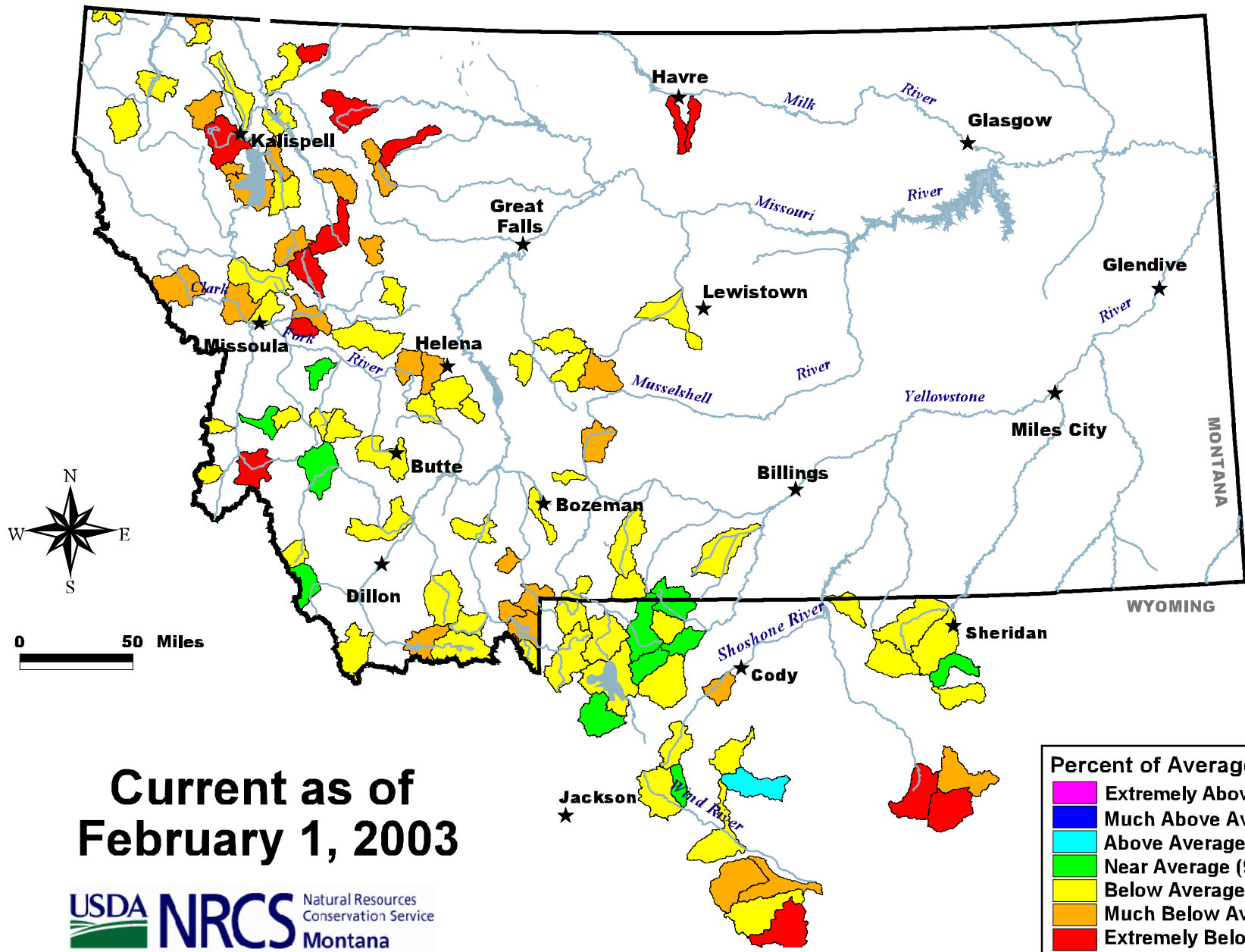


Mountain Snow Water Equivalent



0 50 Miles

Current as of
February 1, 2003



<http://www.mt.nrcs.usda.gov>

Percent of Average by Sub-Basin

Extremely Above Average (Over 150)
Much Above Average (131 - 150)
Above Average (111 - 130)
Near Average (91 - 110)
Below Average (71 - 90)
Much Below Average (51 - 70)
Extremely Below Average (Below 51)

NOTE: Data used to generate this map are **PROVISIONAL** and **SUBJECT TO CHANGE.**