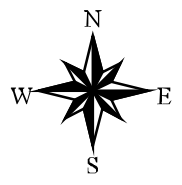
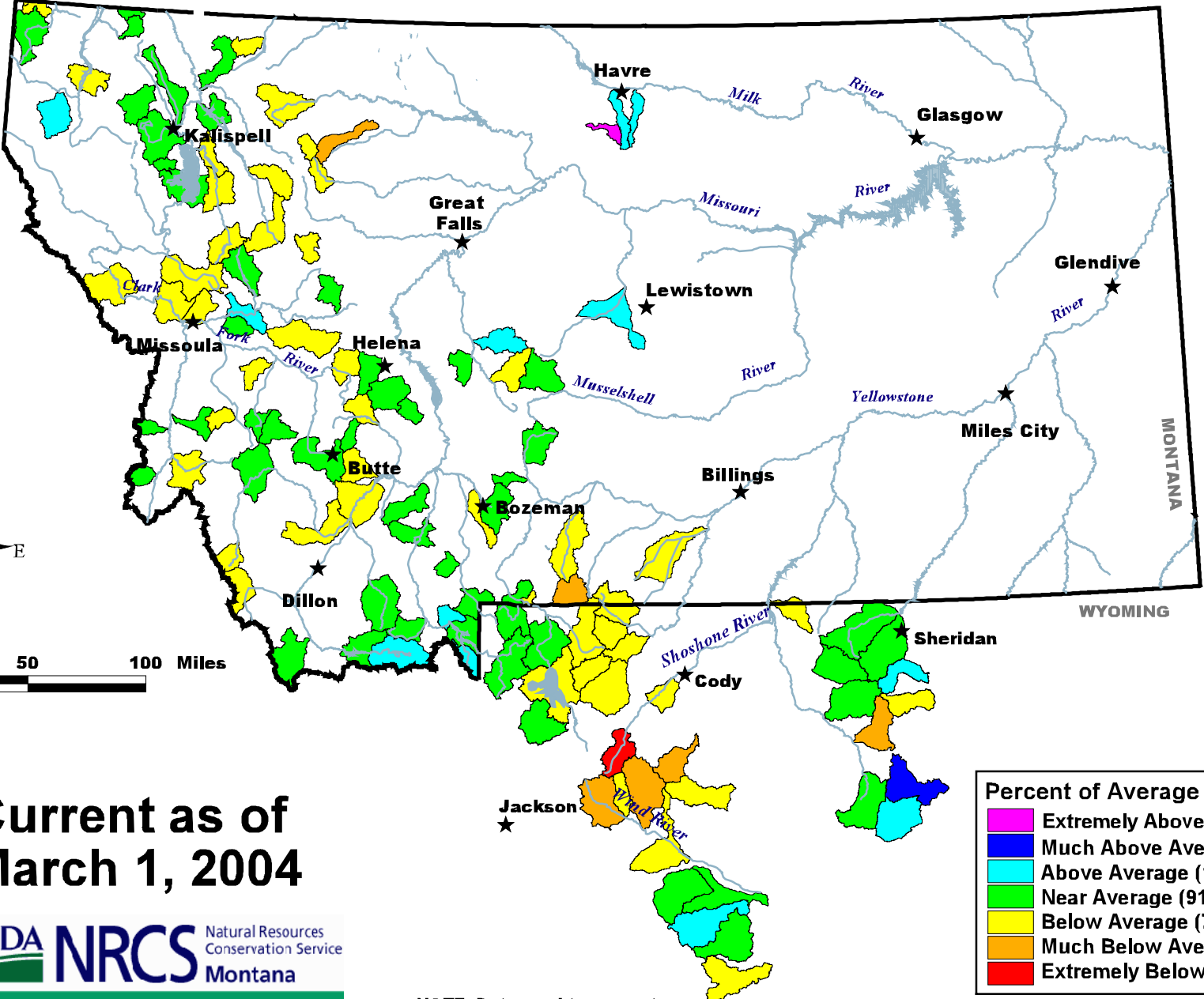


Mountain Snow Water Equivalent



**Current as of
March 1, 2004**



<http://www.mt.nrcs.usda.gov>

Percent of Average by Sub-Basin

- Extremely Above Average (Over 150)
- Much Above Average (131 - 150)
- Above Average (111 - 130)
- Near Average (91 - 110)
- Below Average (71 - 90)
- Much Below Average (51 - 70)
- Extremely Below Average (Below 51)

NOTE: Data used to generate this map are PROVISIONAL and SUBJECT TO CHANGE.