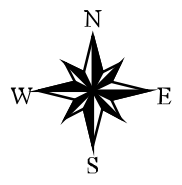
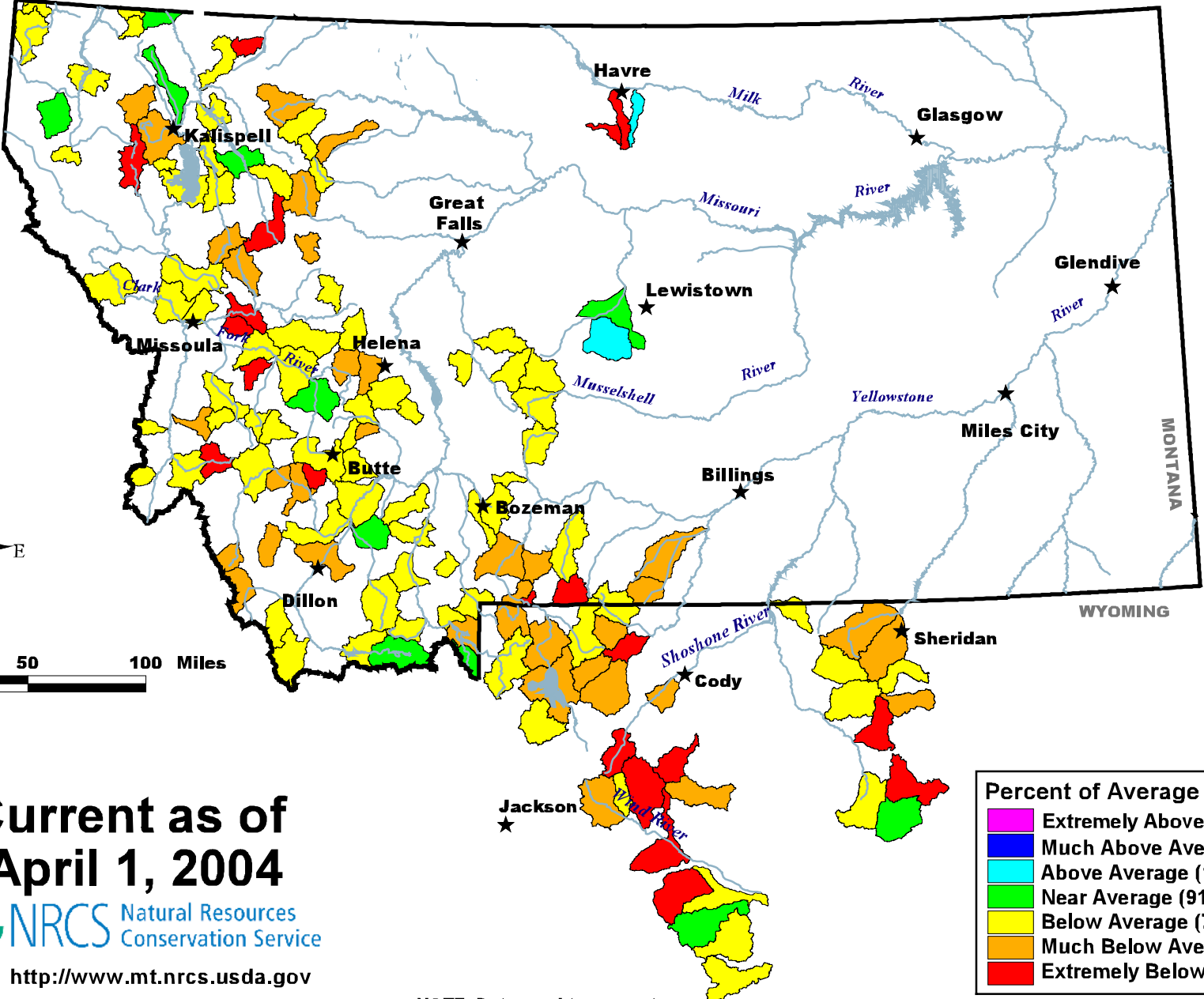


Mountain Snow Water Equivalent



0 50 100 Miles

Current as of
April 1, 2004



<http://www.mt.nrcs.usda.gov>

Percent of Average by Sub-Basin

■	Extremely Above Average (Over 150)
■	Much Above Average (131 - 150)
■	Above Average (111 - 130)
■	Near Average (91 - 110)
■	Below Average (71 - 90)
■	Much Below Average (51 - 70)
■	Extremely Below Average (Below 51)

NOTE: Data used to generate this map are **PROVISIONAL** and **SUBJECT TO CHANGE.**