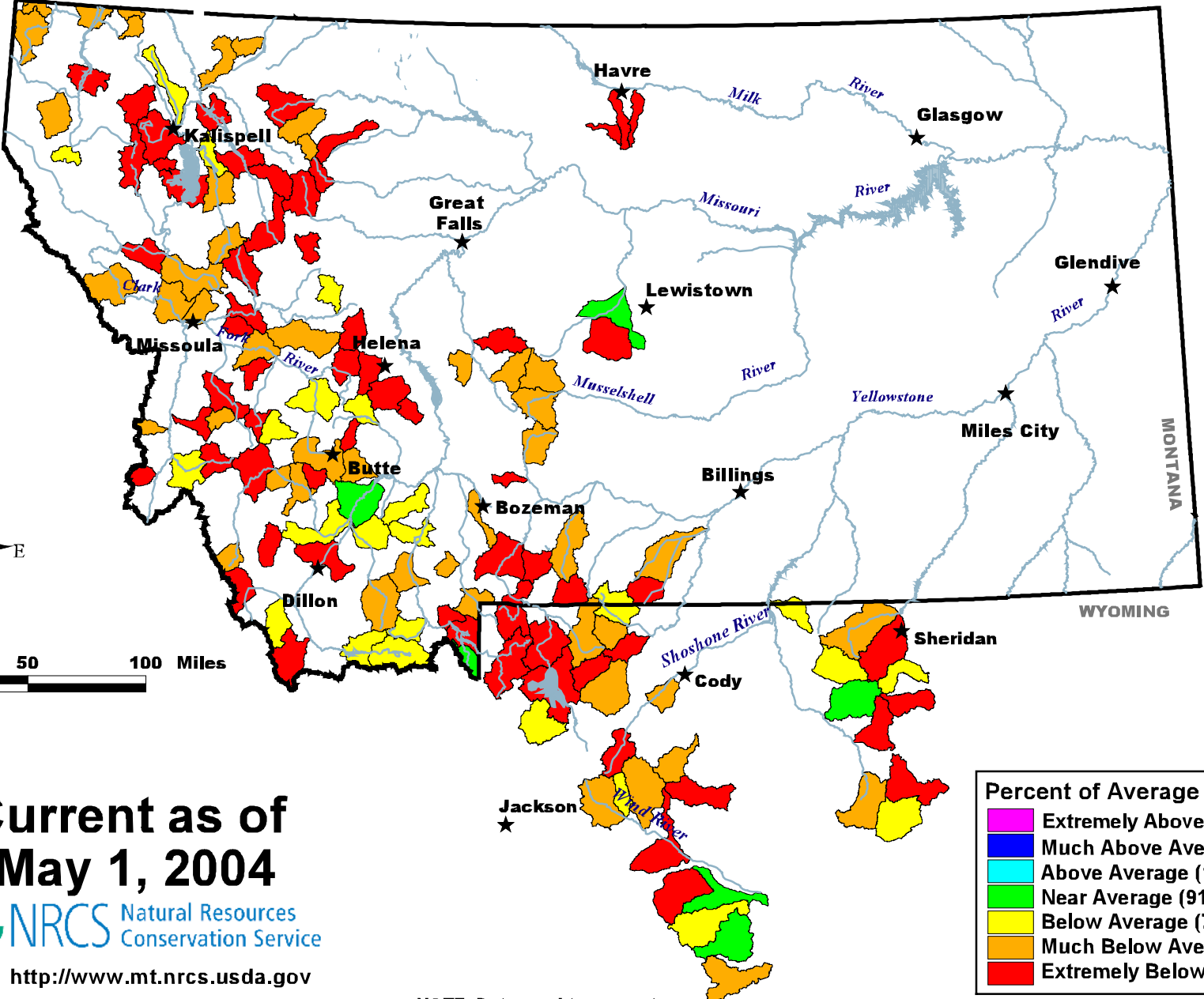


# Mountain Snow Water Equivalent



Current as of  
May 1, 2004



<http://www.mt.nrcs.usda.gov>

**Percent of Average by Sub-Basin**

Extremely Above Average (Over 150)
Much Above Average (131 - 150)
Above Average (111 - 130)
Near Average (91 - 110)
Below Average (71 - 90)
Much Below Average (51 - 70)
Extremely Below Average (Below 51)

**NOTE:** Data used to generate this map are **PROVISIONAL** and **SUBJECT TO CHANGE.**