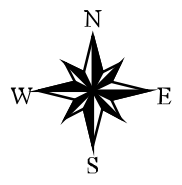
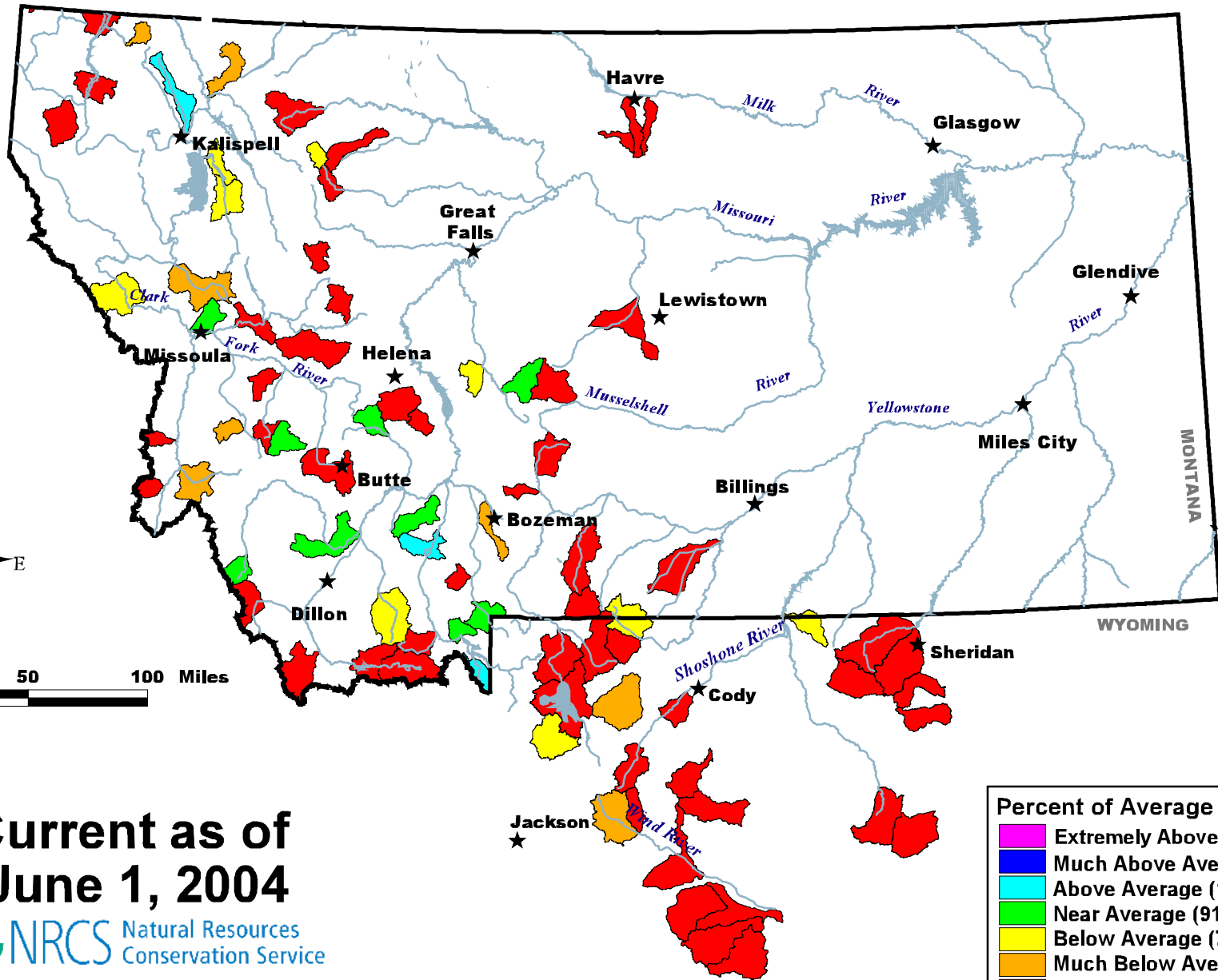


# Mountain Snow Water Equivalent



**Current as of  
June 1, 2004**



<http://www.mt.nrcs.usda.gov>

**Percent of Average by Sub-Basin**

<span style="color: magenta;">■</span>	Extremely Above Average (Over 150)
<span style="color: blue;">■</span>	Much Above Average (131 - 150)
<span style="color: cyan;">■</span>	Above Average (111 - 130)
<span style="color: green;">■</span>	Near Average (91 - 110)
<span style="color: yellow;">■</span>	Below Average (71 - 90)
<span style="color: orange;">■</span>	Much Below Average (51 - 70)
<span style="color: red;">■</span>	Extremely Below Average (Below 51)

**NOTE: Data used to generate this map are PROVISIONAL and SUBJECT TO CHANGE.**