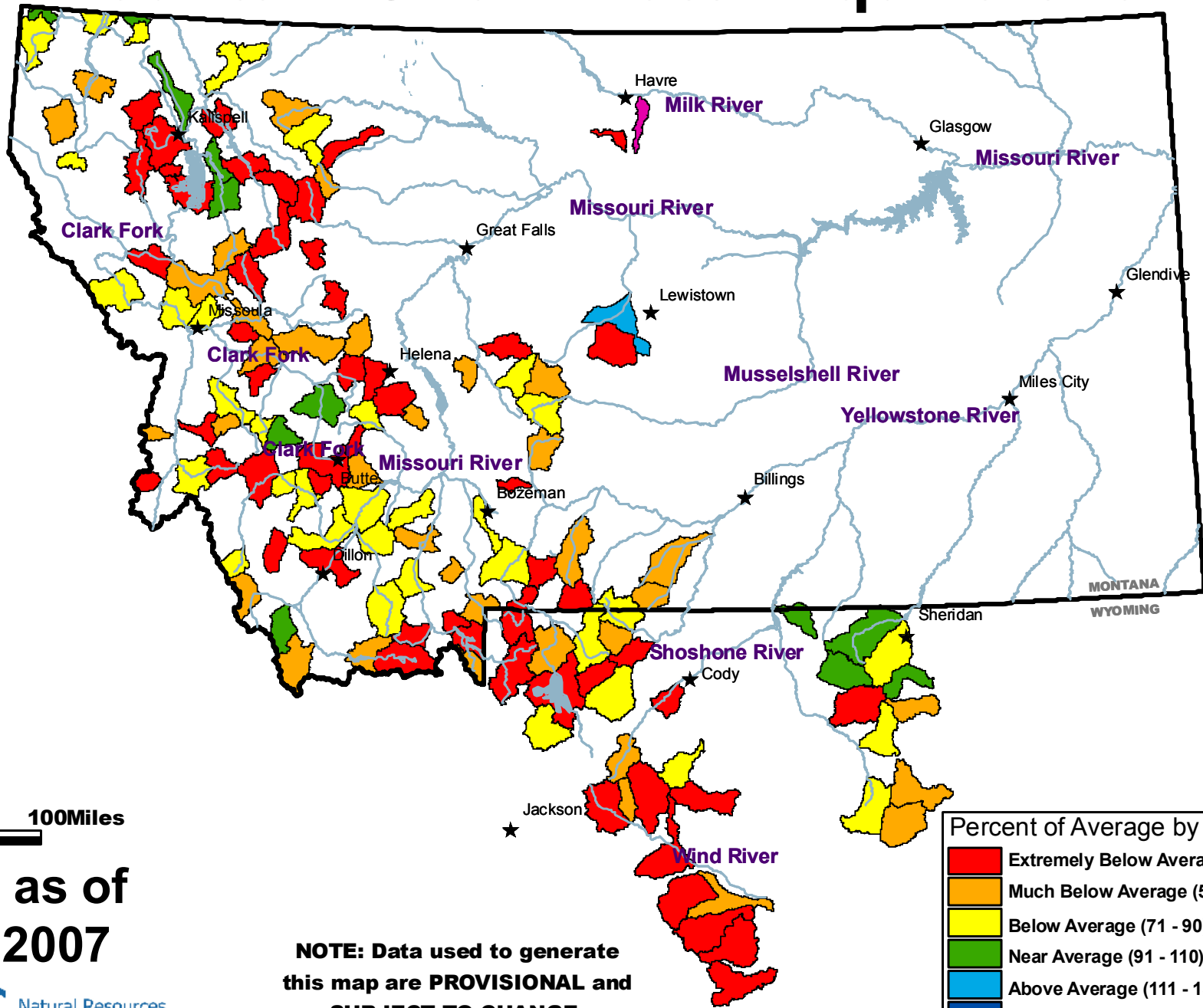


# Mountain Snow Water Equivalent



0 50 100 Miles

Current as of  
May 1, 2007

**NOTE: Data used to generate  
this map are PROVISIONAL and  
SUBJECT TO CHANGE.**

Percent of Average by Sub-Basin	
Red	Extremely Below Average (Below 51)
Orange	Much Below Average (51 - 70)
Yellow	Below Average (71 - 90)
Green	Near Average (91 - 110)
Blue	Above Average (111 - 130)
Dark Blue	Much Above Average (131 - 150)
Pink	Extremely Above Average (Over 150)