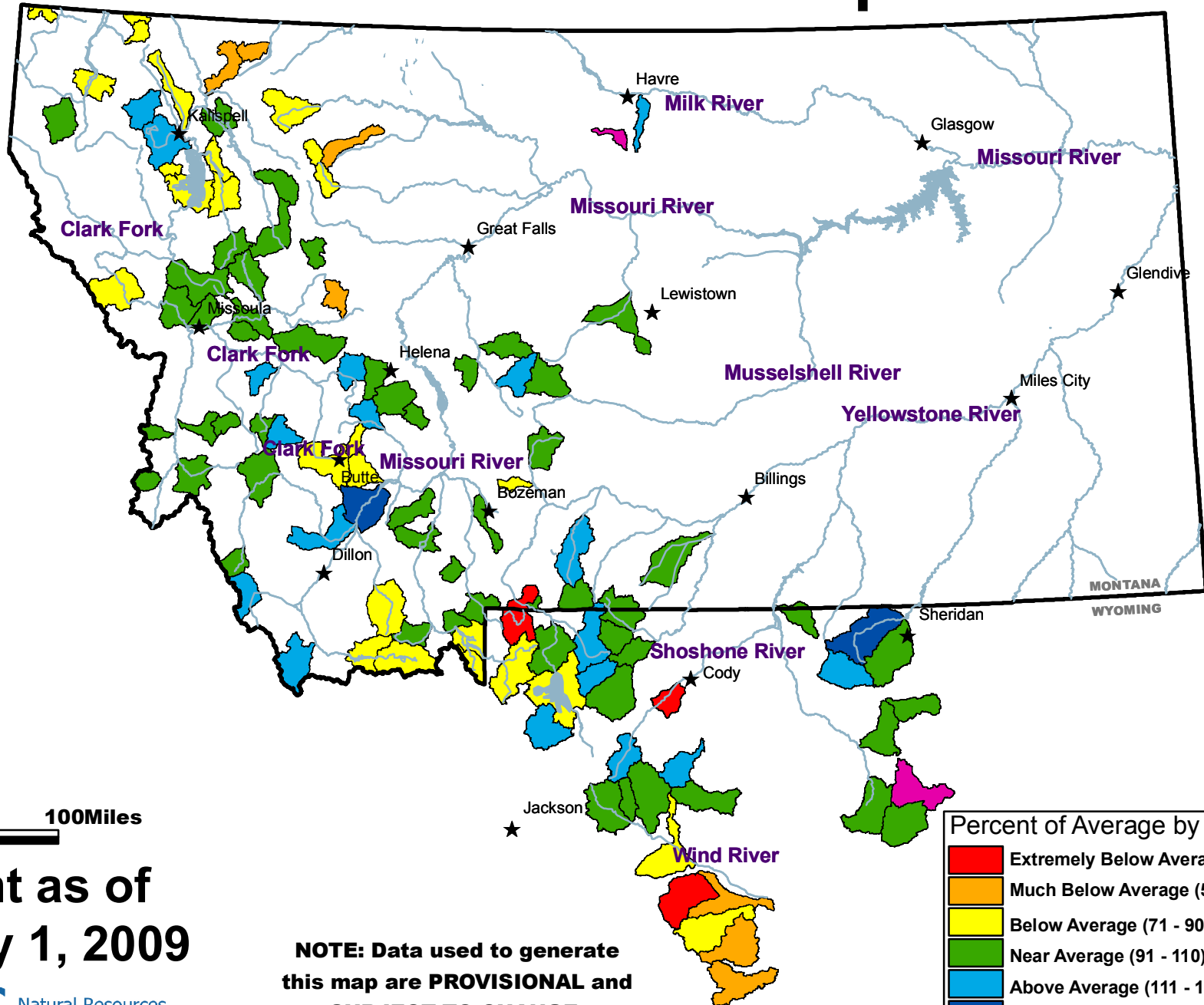


# Mountain Snow Water Equivalent



0 50 100 Miles

Current as of  
February 1, 2009

**NRCS** Natural Resources  
Conservation Service  
<http://www.mt.nrcs.usda.gov>

**NOTE: Data used to generate  
this map are PROVISIONAL and  
SUBJECT TO CHANGE.**

**Percent of Average by Sub-Basin**

- Extremely Below Average (Below 51)
- Much Below Average (51 - 70)
- Below Average (71 - 90)
- Near Average (91 - 110)
- Above Average (111 - 130)
- Much Above Average (131 - 150)
- Extremely Above Average (Over 150)