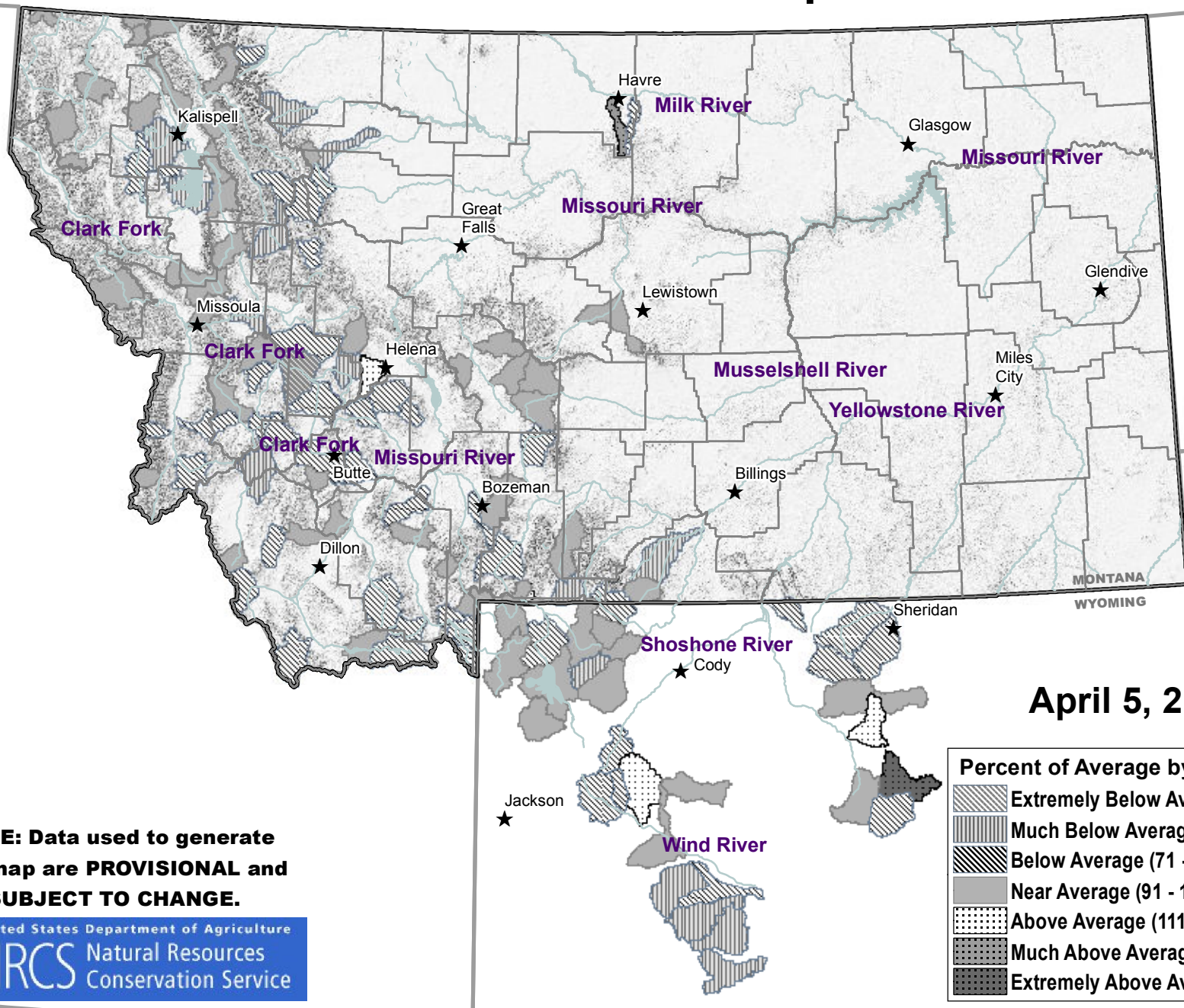


Mountain Snow Water Equivalent



April 5, 2013

Percent of Average by Sub-Basin	
	Extremely Below Average (Below 51)
	Much Below Average (51 - 70)
	Below Average (71 - 90)
	Near Average (91 - 110)
	Above Average (111 - 130)
	Much Above Average (131 - 150)
	Extremely Above Average (Over 150)

NOTE: Data used to generate this map are PROVISIONAL and SUBJECT TO CHANGE.

