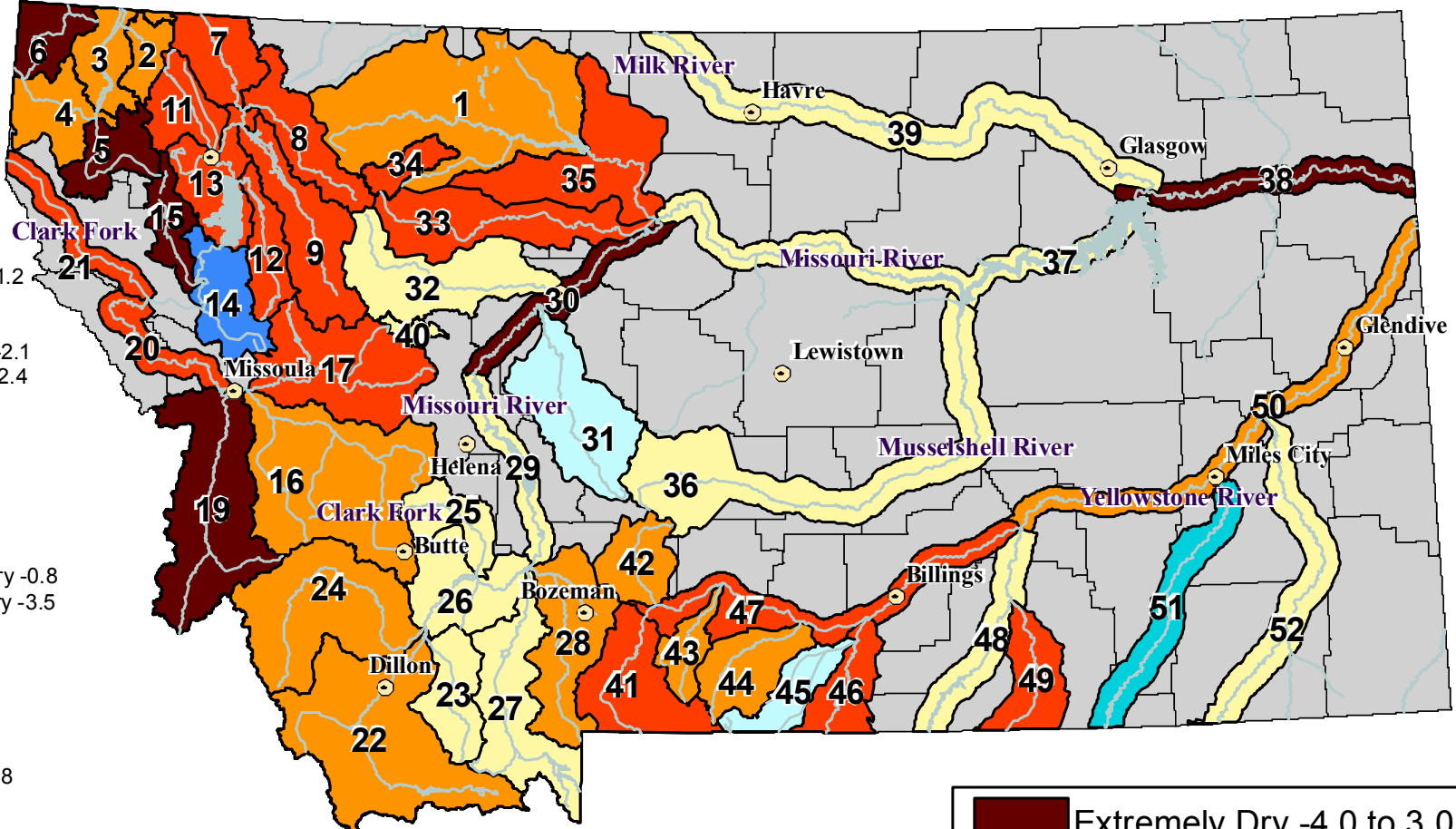


RIVER INDEX & SWSI VALUES

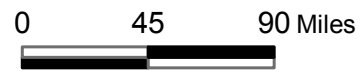
Surface Water Supply Index (SWSI) Values

UNITED STATES DEPARTMENT OF AGRICULTURE NATURAL RESOURCES CONSERVATION SERVICE

- 1 Marias above Tiber Reservoir -1.9
- 2 Tobacco -1.5
- 3 Kootenai Ft. Steele to Libby Dam -1.9
- 4 Kootenai below Libby Dam -1
- 5 Fisher -3.2
- 6 Yaak -3.3
- 7 North FK. Flathead -2.3
- 8 Middle FK. Flathead -2.8
- 9 South FK. Flathead -2.2
- 11 Stillwater/Whitefish -2.1
- 12 Swan -2.5
- 13 Flathead at Polson -2.5
- 14 Mission Valley 3.8
- 15 Little Bitterroot -3.3
- 16 Clark Fork above Milltown -1.2
- 17 Blackfoot -2.6
- 19 Bitterroot -3.1
- 20 Clark Fork below Bitterroot -2.1
- 21 Clark Fork below Flathead -2.4
- 22 Beaverhead -1.8
- 23 Ruby -0.4
- 24 Big Hole -1.4
- 25 Boulder (Jefferson) -0.5
- 26 Jefferson -0.2
- 27 Madison -0.9
- 28 Gallatin -1.4
- 29 Missouri above Canyon Ferry -0.8
- 30 Missouri below Canyon Ferry -3.5
- 31 Smith 1.5
- 32 Sun -0.6
- 33 Teton -2.6
- 34 Birch/Dupuyer Creeks -2
- 35 Marias -2
- 36 Musselshell -0.1
- 37 Missouri above Fort Peck -0.8
- 38 Missouri below Fort Peck -4
- 39 Milk 0.2
- 40 Dearborn near Craig -0.8
- 41 Yellowstone above Livingston -2.6
- 42 Shields -1.7
- 43 Boulder (Yellowstone) -1
- 44 Stillwater -1.9
- 45 Rock/Red Lodge Creeks 1.8
- 46 Clarks Fork -2.6
- 47 Yellowstone above Bighorn -2.4
- 48 Bighorn below Bighorn Lake -0.8
- 49 Little Bighorn -2.4
- 50 Yellowstone below Bighorn -1.4
- 51 Tongue 2.4
- 52 Powder 0.2



Current as of
July 1, 2005



NOTE: Data used to generate this map are PROVISIONAL and SUBJECT TO CHANGE.

NRCS Natural Resources Conservation Service
<http://www.mt.nrcs.usda.gov>

