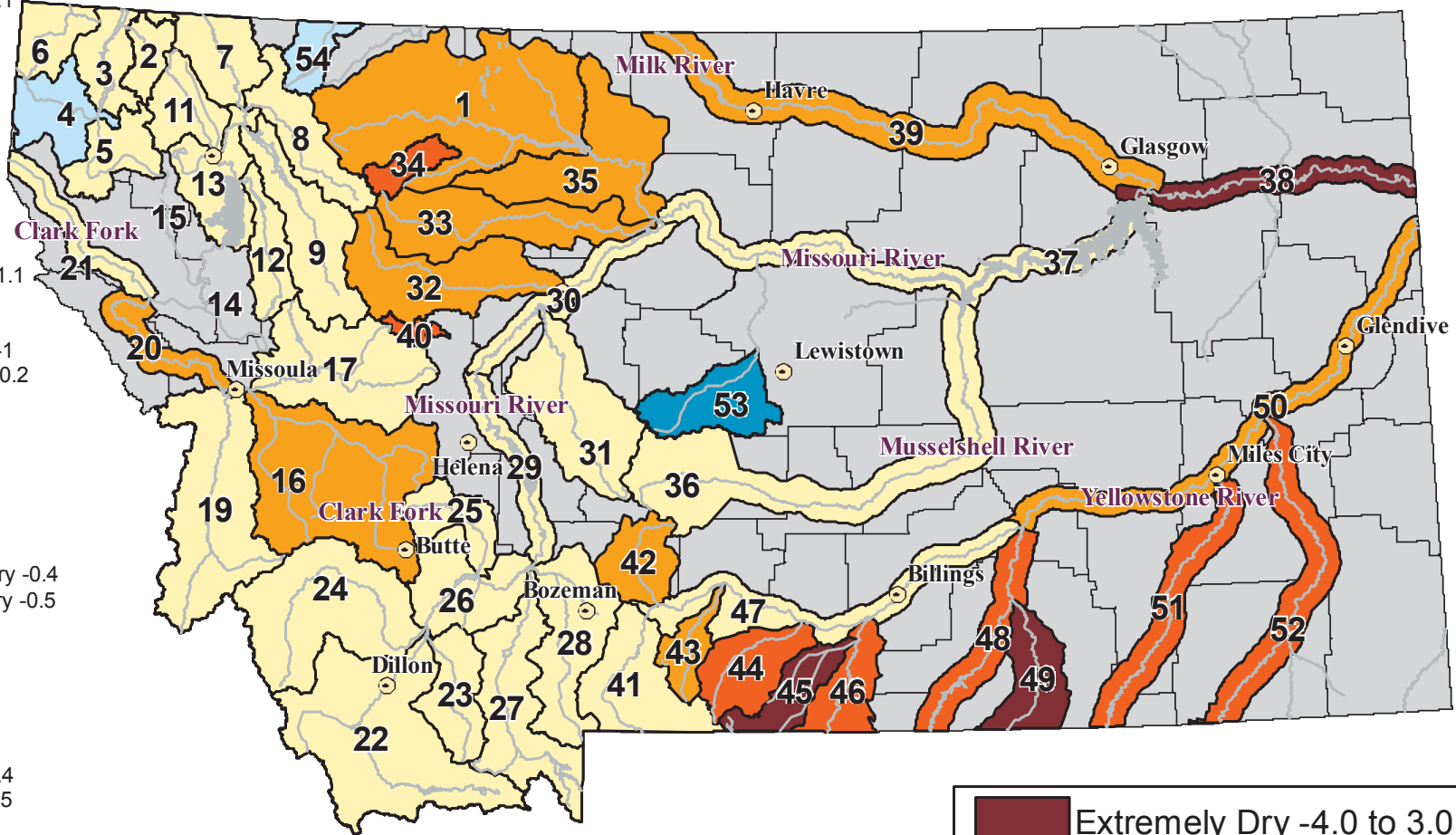


RIVER INDEX & SWSI VALUES

- 1 Marias above Tiber Reservoir -1.3
- 2 Tobacco -0.1
- 3 Kootenai Ft. Steele to Libby Dam 0.6
- 4 Kootenai below Libby Dam 1.1
- 5 Fisher 0.6
- 6 Yaak 0.8
- 7 North FK. Flathead 0.4
- 8 Middle FK. Flathead -0.2
- 9 South FK. Flathead -0.8
- 11 Stillwater/Whitefish 0.6
- 12 Swan 0.2
- 13 Flathead at Polson 0.3
- 14 Mission Valley
- 15 Little Bitterroot
- 16 Clark Fork above Milltown -1.1
- 17 Blackfoot -0.7
- 19 Bitterroot 0
- 20 Clark Fork below Bitterroot -1
- 21 Clark Fork below Flathead -0.2
- 22 Beaverhead -0.8
- 23 Ruby 0.2
- 24 Big Hole -0.3
- 25 Boulder (Jefferson) -0.5
- 26 Jefferson 0.3
- 27 Madison 0.4
- 28 Gallatin -0.6
- 29 Missouri above Canyon Ferry -0.4
- 30 Missouri below Canyon Ferry -0.5
- 31 Smith 0
- 32 Sun -1
- 33 Teton -1.5
- 34 Birch/Dupuyer Creeks -2.4
- 35 Marias -1.5
- 36 Musselshell -0.9
- 37 Missouri above Fort Peck -0.4
- 38 Missouri below Fort Peck -3.5
- 39 Milk -1.1
- 40 Dearborn near Craig -2.4
- 41 Yellowstone above Livingston 0.2
- 42 Shields -1.9
- 43 Boulder (Yellowstone) -1.6
- 44 Stillwater -2
- 45 Rock/Red Lodge Creeks -3.5
- 46 Clarks Fork -2.1
- 47 Yellowstone above Bighorn -0.7
- 48 Bighorn below Bighorn Lake -2.4
- 49 Little Bighorn -3
- 50 Yellowstone below Bighorn -1.5
- 51 Tongue -2.8
- 52 Powder -2.6
- 53 Upper Judith River 2
- 54 Saint Mary River 1.4

# Surface Water Supply Index (SWSI) Values

UNITED STATES DEPARTMENT OF AGRICULTURE NATURAL RESOURCES CONSERVATION SERVICE



Current as of  
July 1, 2006



**NOTE: Data used to generate this map are PROVISIONAL and SUBJECT TO CHANGE.**



<http://www.mt.nrcs.usda.gov>

