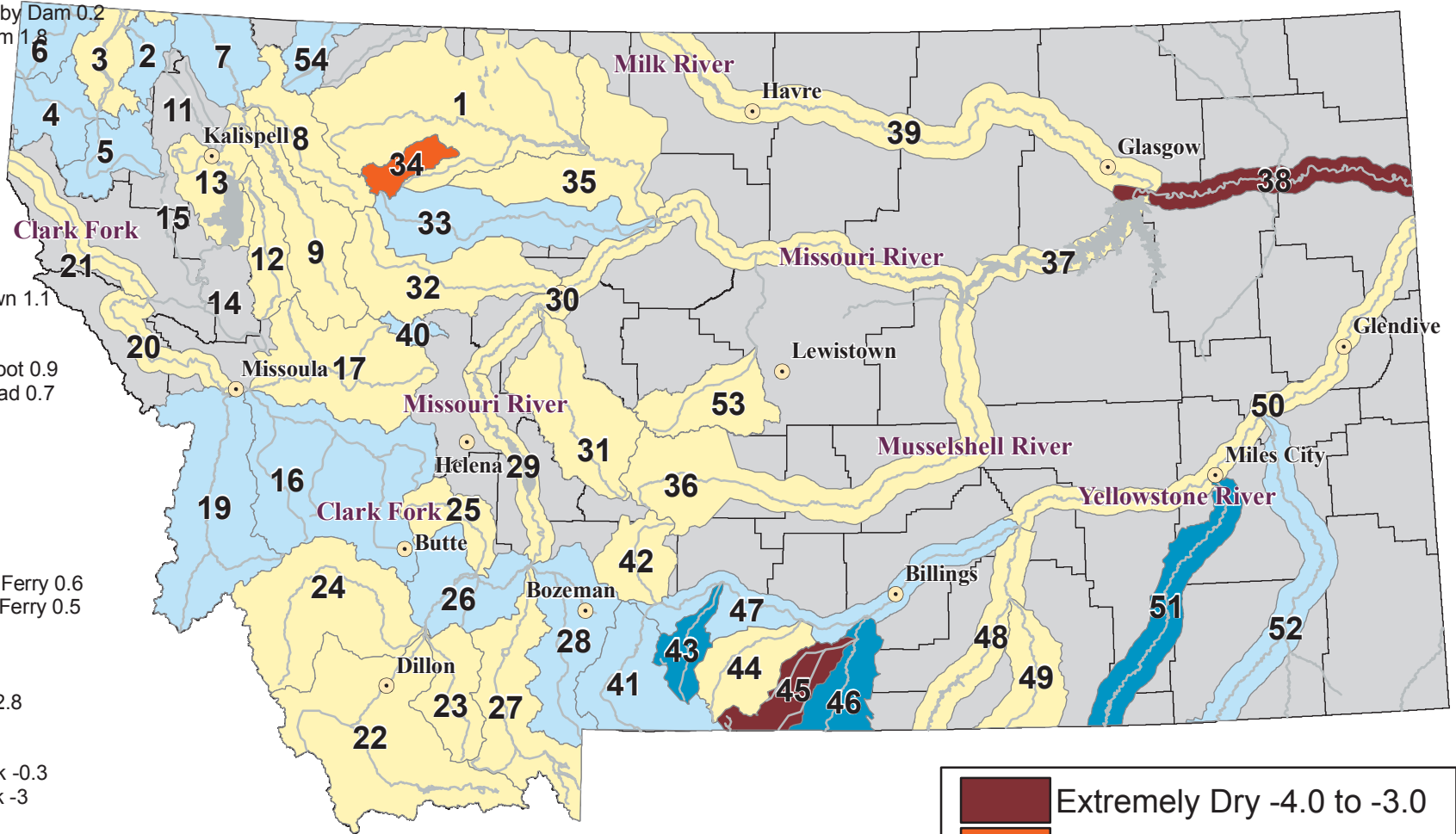


RIVER INDEX & SWSI VALUES

# Surface Water Supply Index (SWSI) Values

UNITED STATES DEPARTMENT OF AGRICULTURE NATURAL RESOURCES CONSERVATION SERVICE

- 1 Marias above Tiber Reservoir 0
- 2 Tobacco 1.5
- 3 Kootenai Ft. Steele to Libby Dam 0.2
- 4 Kootenai below Libby Dam 1.8
- 5 Fisher 1.4
- 6 Yaak 1.6
- 7 North FK. Flathead 1.2
- 8 Middle FK. Flathead 0.6
- 9 South FK. Flathead 0.6
- 11 Stillwater/Whitefish
- 12 Swan -0.8
- 13 Flathead at Polson 0.6
- 14 Mission Valley
- 15 Little Bitterroot
- 16 Clark Fork above Milltown 1.1
- 17 Blackfoot 0.1
- 19 Bitterroot 1.7
- 20 Clark Fork below Bitterroot 0.9
- 21 Clark Fork below Flathead 0.7
- 22 Beaverhead -0.1
- 23 Ruby -0.7
- 24 Big Hole 0.7
- 25 Boulder (Jefferson) -0.8
- 26 Jefferson 1.3
- 27 Madison 0.9
- 28 Gallatin 1.5
- 29 Missouri above Canyon Ferry 0.6
- 30 Missouri below Canyon Ferry 0.5
- 31 Smith 0.5
- 32 Sun 0.7
- 33 Teton 1.1
- 34 Birch/Dupuyer Creeks -2.8
- 35 Marias 0
- 36 Musselshell -0.8
- 37 Missouri above Fort Peck -0.3
- 38 Missouri below Fort Peck -3
- 39 Milk 0.6
- 40 Dearborn near Craig 1.8
- 41 Yellowstone above Livingston 1.7
- 42 Shields -0.1
- 43 Boulder (Yellowstone) 2
- 44 Stillwater 0.5
- 45 Rock/Red Lodge Creeks -3.2
- 46 Clarks Fork 2.1
- 47 Yellowstone above Bighorn 1.6
- 48 Bighorn below Bighorn Lake -0.2
- 49 Little Bighorn 0.3
- 50 Yellowstone below Bighorn -0.2
- 51 Tongue 2.3
- 52 Powder 1.7
- 53 Upper Judith River 0.8
- 54 Saint Mary River 1.6



Current as of  
March 1, 2008



**NOTE: Data used to generate this map are PROVISIONAL and SUBJECT TO CHANGE.**



<http://www.mt.nrcs.usda.gov>

