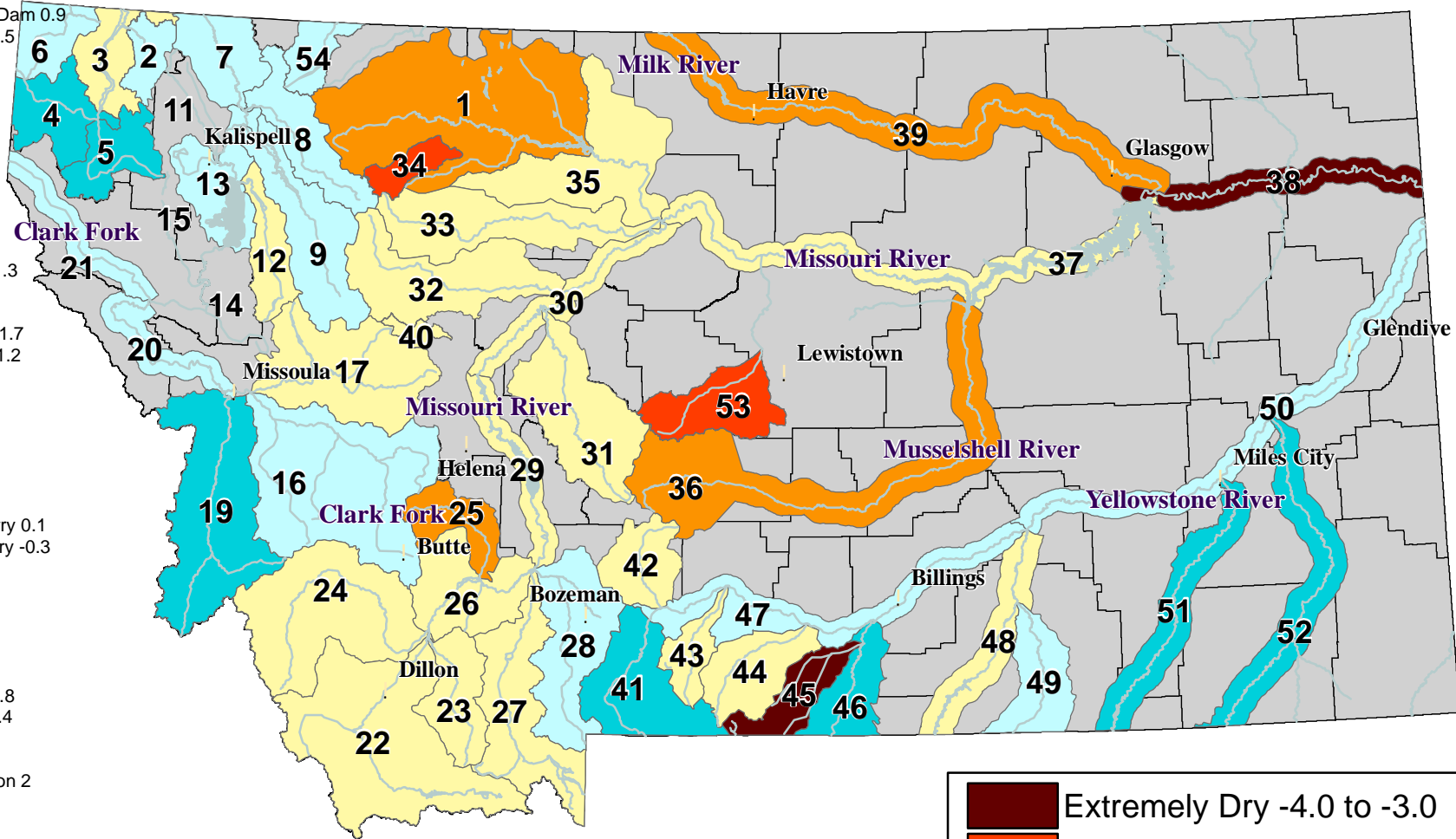


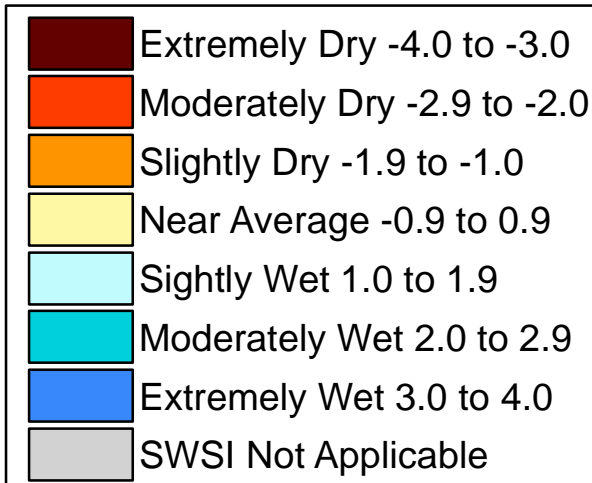
Surface Water Supply Index (SWSI) Values

UNITED STATES DEPARTMENT OF AGRICULTURE NATURAL RESOURCES CONSERVATION SERVICE

- 1 Marias above Tiber Reservoir -1.3
- 2 Tobacco 1.5
- 3 Kootenai Ft. Steele to Libby Dam 0.9
- 4 Kootenai below Libby Dam 2.5
- 5 Fisher 2.3
- 6 Yaak 1.6
- 7 North FK. Flathead 1.2
- 8 Middle FK. Flathead 1.3
- 9 South FK. Flathead 1.3
- 11 Stillwater/Whitefish
- 12 Swan 0.1
- 13 Flathead at Polson 1
- 14 Mission Valley
- 15 Little Bitterroot
- 16 Clark Fork above Milltown 1.3
- 17 Blackfoot 0.3
- 19 Bitterroot 2
- 20 Clark Fork below Bitterroot 1.7
- 21 Clark Fork below Flathead 1.2
- 22 Beaverhead -0.2
- 23 Ruby -0.8
- 24 Big Hole 0.4
- 25 Boulder (Jefferson) -1.1
- 26 Jefferson 0.7
- 27 Madison 0.7
- 28 Gallatin 1
- 29 Missouri above Canyon Ferry 0.1
- 30 Missouri below Canyon Ferry -0.3
- 31 Smith 0.9
- 32 Sun -0.3
- 33 Teton 0.6
- 34 Birch/Dupuyer Creeks -2.9
- 35 Marias -0.2
- 36 Musselshell -1.5
- 37 Missouri above Fort Peck -0.8
- 38 Missouri below Fort Peck -3.4
- 39 Milk -1.9
- 40 Dearborn near Craig 0.6
- 41 Yellowstone above Livingston 2
- 42 Shields -0.3
- 43 Boulder (Yellowstone) 0.7
- 44 Stillwater 0.6
- 45 Rock/Red Lodge Creeks -3.2
- 46 Clarks Fork 2.5
- 47 Yellowstone above Bighorn 1.7
- 48 Bighorn below Bighorn Lake 0.1
- 49 Little Bighorn 1.2
- 50 Yellowstone below Bighorn 1
- 51 Tongue 2.7
- 52 Powder 2
- 53 Upper Judith River -2.9
- 54 Saint Mary River 1.2



**Current as of
April 1, 2008**



NOTE: Data used to generate this map are PROVISIONAL and SUBJECT TO CHANGE.



<http://www.mt.nrcs.usda.gov>