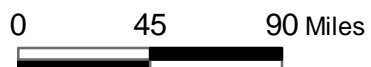


Surface Water Supply Index (SWSI) Values

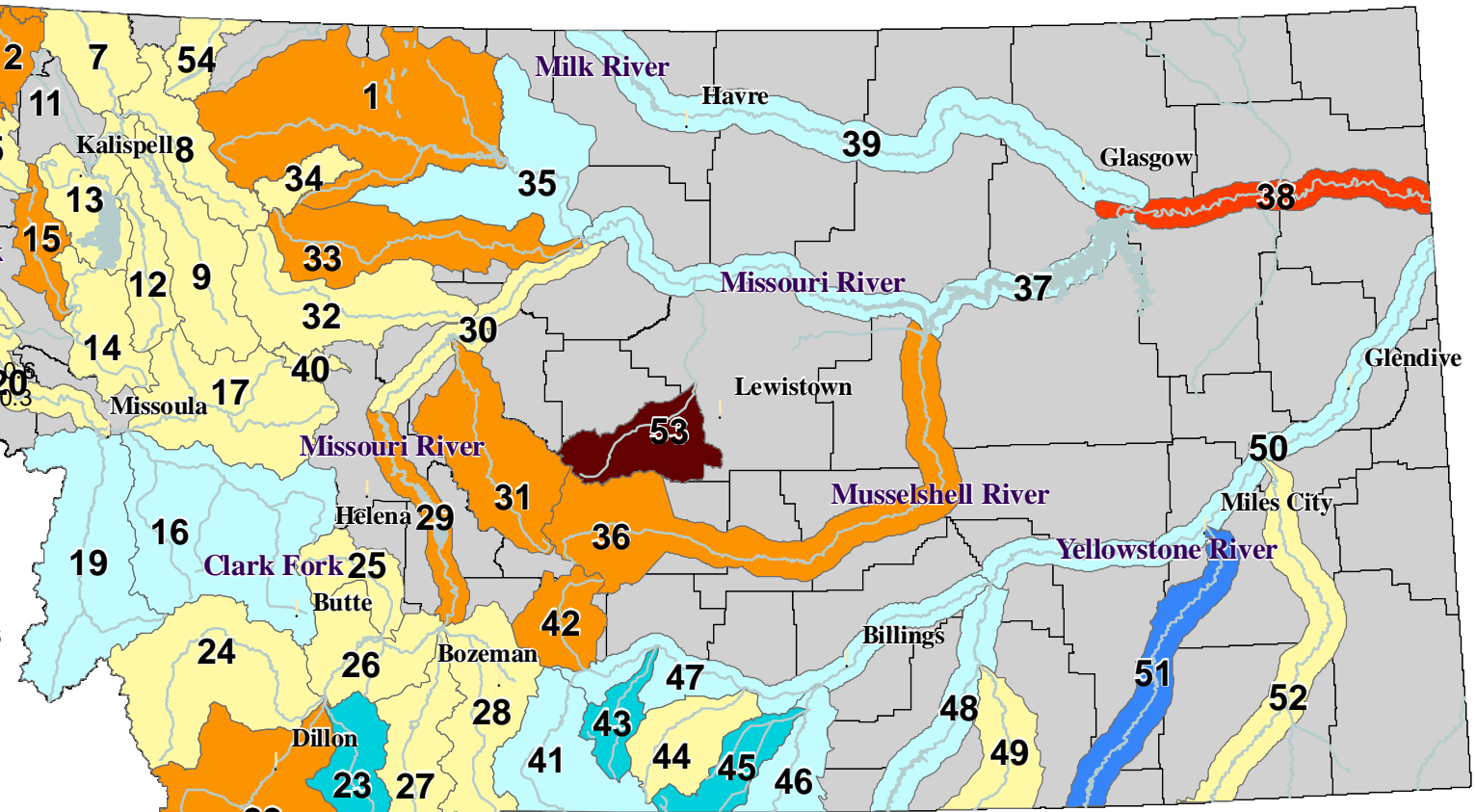
UNITED STATES DEPARTMENT OF AGRICULTURE NATURAL RESOURCES CONSERVATION SERVICE

RIVER INDEX & SWSI VALUES

- 1 Marias River above Tiber Reservoir -1.2
- 2 Tobacco River -1.2
- 3 Kootenai Ft. Steele to Libby Dam -1
- 4 Kootenai River below Libby Dam -1.8
- 5 Fisher River 0.2
- 6 Yaak River -1.5
- 7 North FK. Flathead River -0.4
- 8 Middle FK. Flathead River 0
- 9 South FK. Flathead River -0.9
- 12 Swan River 0.4
- 13 Flathead River at Polson 0.2
- 14 Mission Valley -0.6
- 15 Little Bitterroot River -1.6
- 16 Clark Fork River above Milltown 2.1
- 17 Blackfoot River -0.2
- 19 Bitterroot River 1
- 20 Clark Fork River below Bitterroot River 0.5
- 21 Clark Fork River below Flathead River 0.3
- 22 Beaverhead River -1.6
- 23 Ruby River 2.4
- 24 Big Hole River -0.7
- 25 Boulder River (Jefferson) -0.6
- 26 Jefferson River -0.3
- 27 Madison River 0.5
- 28 Gallatin River 0.7
- 29 Missouri River above Canyon Ferry -1
- 30 Missouri River below Canyon Ferry 0.6
- 31 Smith River -1.3
- 32 Sun River 0.7
- 33 Teton River -1.2
- 34 Birch/Dupuyer Creeks 0.4
- 35 Marias River 1
- 36 Musselshell River -1
- 37 Missouri River above Fort Peck 1.1
- 38 Missouri River below Fort Peck -2.4
- 39 Milk River 1.1
- 40 Dearborn River near Craig 0
- 41 Yellowstone River above Livingston 1.6
- 42 Shields River -1.2
- 43 Boulder River (Yellowstone) 2.1
- 44 Stillwater River -0.8
- 45 Rock/Red Lodge Creeks 2.2
- 46 Clarks Fork River 1
- 47 Yellowstone River above Bighorn River 1.2
- 48 Bighorn River below Bighorn Lake 1.9
- 49 Little Bighorn River 0.6
- 50 Yellowstone River below Bighorn River 1.5
- 51 Tongue River 3.9
- 52 Powder River 0.3
- 53 Upper Judith River -3.2
- 54 St. Mary River 0.7



NOTE: Data used to generate this map are PROVISIONAL and SUBJECT TO CHANGE.



**Current as of
September 1, 2008**

NRCS Natural Resources Conservation Service
<http://www.mt.nrcs.usda.gov>

