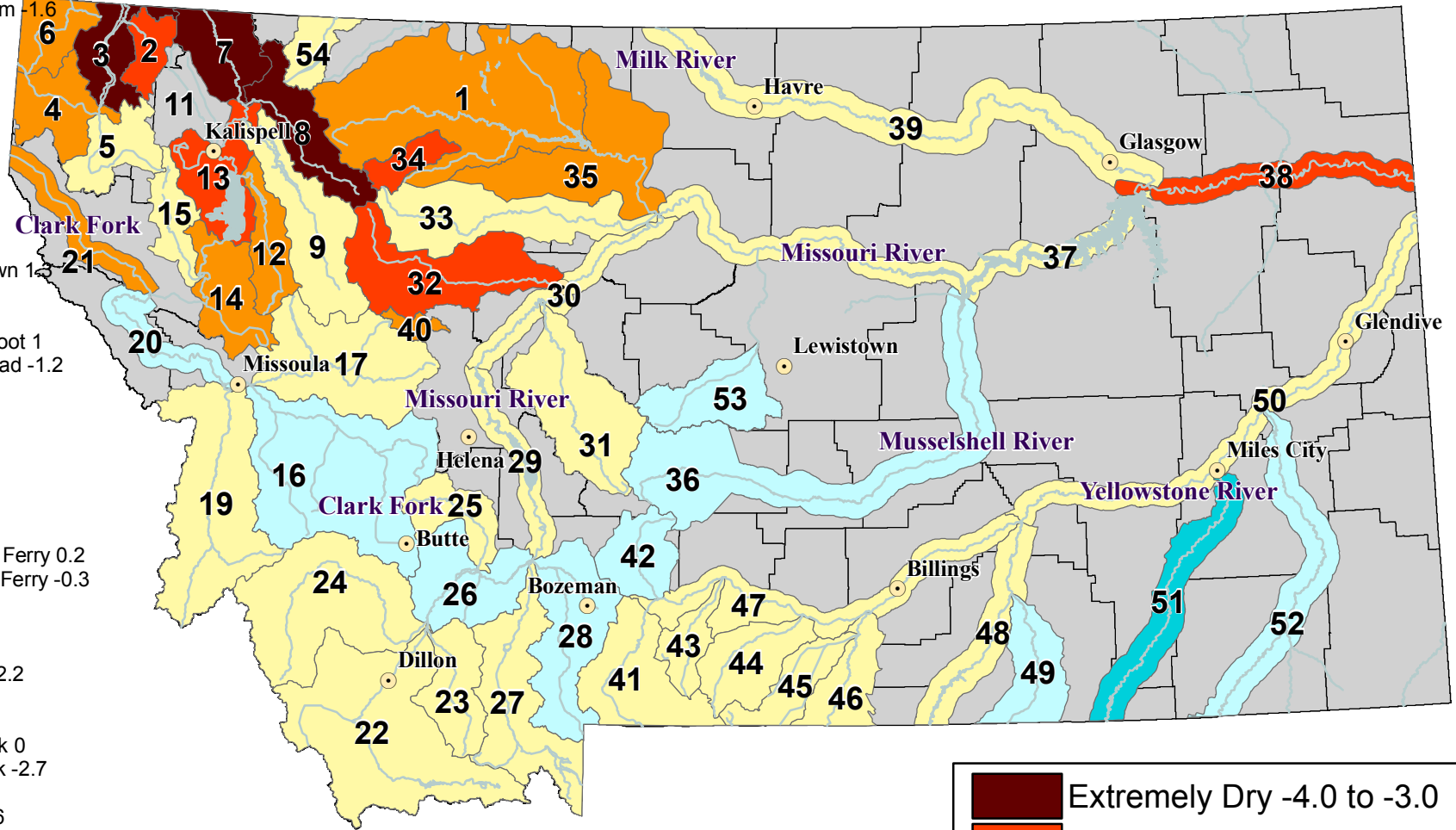


Surface Water Supply Index (SWSI) Values

UNITED STATES DEPARTMENT OF AGRICULTURE NATURAL RESOURCES CONSERVATION SERVICE

RIVER INDEX & SWSI VALUES

- 1 Marias above Tiber Reservoir -1.8
- 2 Tobacco -2.3
- 3 Kootenai Ft. Steele to Libby Dam -3.4
- 4 Kootenai below Libby Dam -1.6
- 5 Fisher 0.2
- 6 Yaak -1.7
- 7 North FK. Flathead -3.3
- 8 Middle FK. Flathead -3.3
- 9 South FK. Flathead -0.2
- 11 Stillwater/Whitefish
- 12 Swan -1.2
- 13 Flathead at Polson -2.4
- 14 Mission Valley -1.9
- 15 Little Bitterroot 0.2
- 16 Clark Fork above Milltown 1.2
- 17 Blackfoot 0.1
- 19 Bitterroot 0.1
- 20 Clark Fork below Bitterroot 1
- 21 Clark Fork below Flathead -1.2
- 22 Beaverhead -0.2
- 23 Ruby -0.5
- 24 Big Hole 0.3
- 25 Boulder (Jefferson) 0.7
- 26 Jefferson 1.4
- 27 Madison 0
- 28 Gallatin 1
- 29 Missouri above Canyon Ferry 0.2
- 30 Missouri below Canyon Ferry -0.3
- 31 Smith 0.5
- 32 Sun -2.3
- 33 Teton 0.2
- 34 Birch/Dupuyer Creeks -2.2
- 35 Marias -1.7
- 36 Musselshell 1.2
- 37 Missouri above Fort Peck 0
- 38 Missouri below Fort Peck -2.7
- 39 Milk 0.2
- 40 Dearborn near Craig -1.6
- 41 Yellowstone above Livingston 0.4
- 42 Shields 1.9
- 43 Boulder (Yellowstone) 0.6
- 44 Stillwater -0.5
- 45 Rock/Red Lodge Creeks 0
- 46 Clarks Fork -0.9
- 47 Yellowstone above Bighorn 0.1
- 48 Bighorn below Bighorn Lake 0.3
- 49 Little Bighorn 1
- 50 Yellowstone below Bighorn 0.2
- 51 Tongue 2.5
- 52 Powder 1.1
- 53 Upper Judith River 1.3
- 54 Saint Mary River 0.2



**Current as of
January 1, 2009**

**NOTE: Data used to generate
this map are PROVISIONAL and
SUBJECT TO CHANGE.**



<http://www.mt.nrcs.usda.gov>

