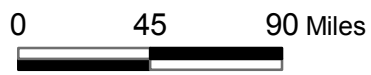
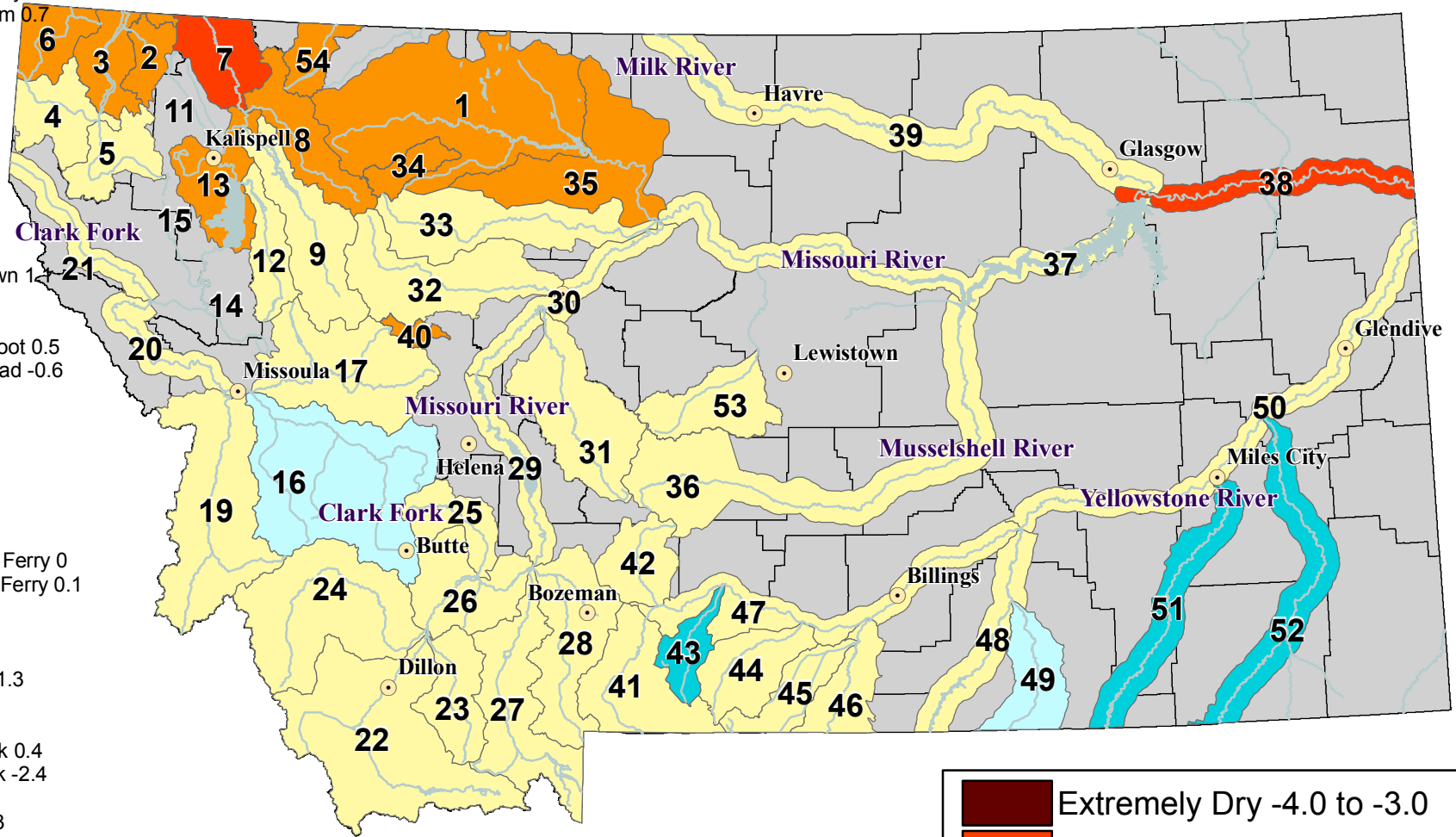


Surface Water Supply Index (SWSI) Values

UNITED STATES DEPARTMENT OF AGRICULTURE NATURAL RESOURCES CONSERVATION SERVICE

RIVER INDEX & SWSI VALUES

- 1 Marias above Tiber Reservoir -1.3
- 2 Tobacco -1.2
- 3 Kootenai Ft. Steele to Libby Dam -1.2
- 4 Kootenai below Libby Dam 0.7
- 5 Fisher 0.8
- 6 Yaak -1.5
- 7 North FK. Flathead -2.4
- 8 Middle FK. Flathead -1.2
- 9 South FK. Flathead 0.3
- 11 Stillwater/Whitefish
- 12 Swan -0.6
- 13 Flathead at Polson -1.2
- 14 Mission Valley
- 15 Little Bitterroot
- 16 Clark Fork above Milltown 1.1
- 17 Blackfoot 0.3
- 19 Bitterroot 0.4
- 20 Clark Fork below Bitterroot 0.5
- 21 Clark Fork below Flathead -0.6
- 22 Beaverhead -0.5
- 23 Ruby -0.5
- 24 Big Hole 0.8
- 25 Boulder (Jefferson) -0.2
- 26 Jefferson 0.9
- 27 Madison -0.9
- 28 Gallatin -0.7
- 29 Missouri above Canyon Ferry 0
- 30 Missouri below Canyon Ferry 0.1
- 31 Smith -0.1
- 32 Sun -0.4
- 33 Teton 0.2
- 34 Birch/Dupuyer Creeks -1.3
- 35 Marias -1.3
- 36 Musselshell 0.3
- 37 Missouri above Fort Peck 0.4
- 38 Missouri below Fort Peck -2.4
- 39 Milk -0.1
- 40 Dearborn near Craig -1.3
- 41 Yellowstone above Livingston 0.6
- 42 Shields 0.3
- 43 Boulder (Yellowstone) 2.2
- 44 Stillwater -0.5
- 45 Rock/Red Lodge Creeks -0.7
- 46 Clarks Fork 0.7
- 47 Yellowstone above Bighorn 0.6
- 48 Bighorn below Bighorn Lake 0.3
- 49 Little Bighorn 1.1
- 50 Yellowstone below Bighorn 0.5
- 51 Tongue 2.4
- 52 Powder 2
- 53 Upper Judith River 0.8
- 54 Saint Mary River -1.1



**Current as of
March 1, 2009**

**NOTE: Data used to generate
this map are PROVISIONAL and
SUBJECT TO CHANGE.**



<http://www.mt.nrcs.usda.gov>

