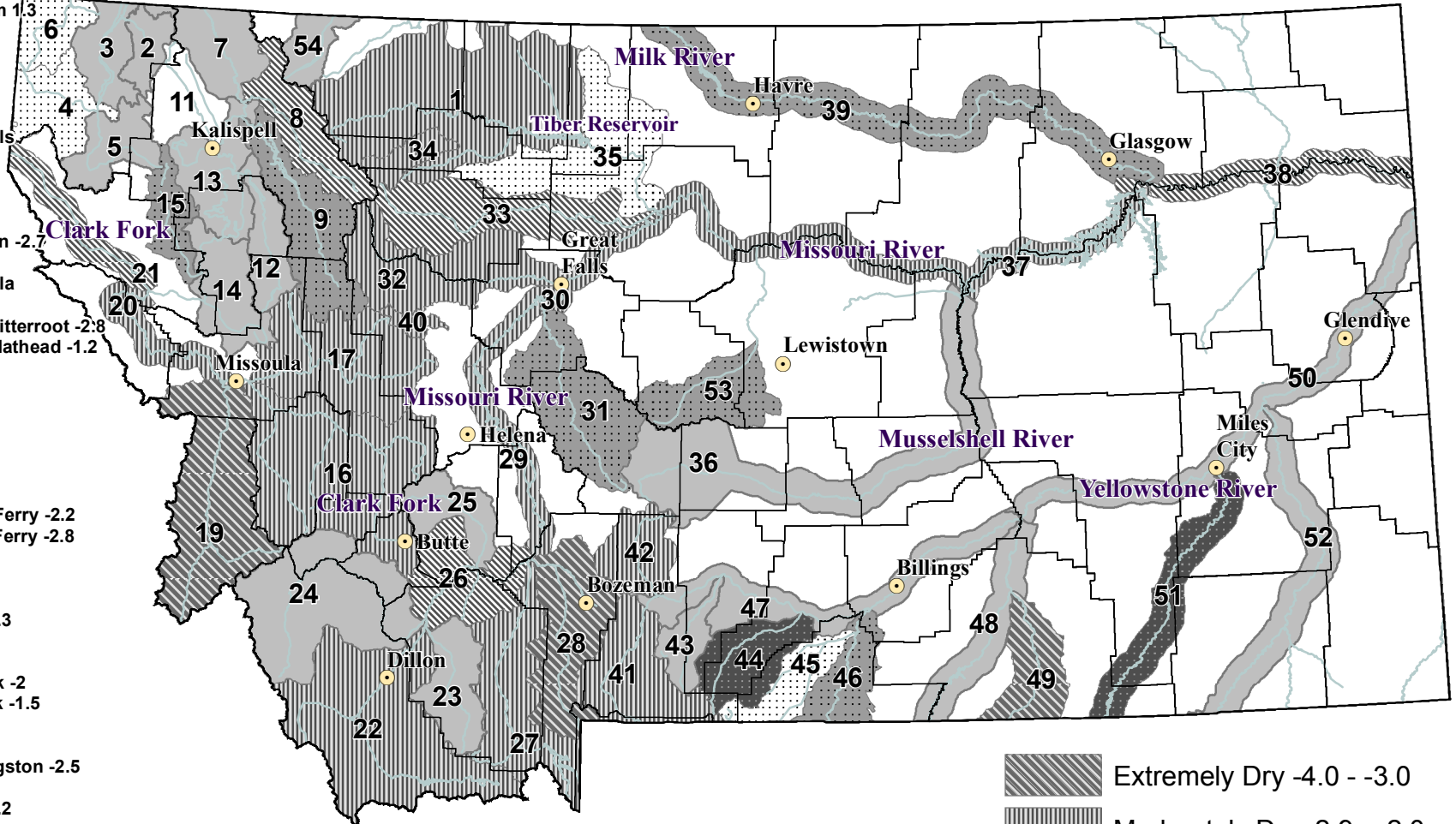


RIVER INDEX & SWSI VALUES

- 1 Marias above Tiber Reservoir -2.6
- 2 Tobacco -0.4
- 3 Kootenai Ft. Steele to Libby Dam 0.8
- 4 Kootenai below Libby Dam 1.3
- 5 Fisher 0.5
- 6 Yaak 1.4
- 7 North FK. Flathead -0.4
- 8 Middle FK. Flathead -1.3
- 9 South FK. Flathead 2.3
- 10 Flathead at Columbia Falls
- 12 Swan -0.4
- 13 Flathead at Polson -0.4
- 14 Mission Valley -0.6
- 15 Little Bitterroot 2.1
- 16 Clark Fork above Milltown -2.7
- 17 Blackfoot -2.2
- 18 Clark Fork above Missoula
- 19 Bitterroot -3.4
- 20 Clark Fork River below Bitterroot -2.8
- 21 Clark Fork River below Flathead -1.2
- 22 Beaverhead -2.5
- 23 Ruby -0.3
- 24 Big Hole -0.5
- 25 Boulder (Jefferson) -0.3
- 26 Jefferson -1
- 27 Madison -2
- 28 Gallatin -3.9
- 29 Missouri above Canyon Ferry -2.2
- 30 Missouri below Canyon Ferry -2.8
- 31 Smith 2.2
- 32 Sun -2.5
- 33 Teton -1.4
- 34 Birch/Dupuyer Creeks -2.3
- 35 Marias 1.2
- 36 Musselshell -0.5
- 37 Missouri above Fort Peck -2
- 38 Missouri below Fort Peck -1.5
- 39 Milk 2.8
- 40 Dearborn near Craig -2.5
- 41 Yellowstone above Livingston -2.5
- 42 Shields -2.6
- 43 Boulder (Yellowstone) -0.2
- 44 Stillwater 3
- 45 Rock/Red Lodge Creeks 1
- 46 Clarks Fork Yellowstone 2.1
- 47 Yellowstone above Bighorn River -0.6
- 48 Bighorn below Bighorn Lake -0.9
- 49 Little Bighorn -3.3
- 50 Yellowstone below Bighorn -0.8
- 51 Tongue 3.8
- 52 Powder 0.6
- 53 Upper Judith 2
- 54 Saint Mary 0.4

Surface Water Supply Index (SWSI) Values



October 21, 2013

NOTE: Data used to generate this map are PROVISIONAL and SUBJECT TO CHANGE.

- Extremely Dry -4.0 - -3.0
- Moderately Dry -2.9 - -2.0
- Slightly Dry -1.9 - -1.0
- Near Average -0.9 - 0.9
- Slightly Wet 1.0 - 1.9
- Moderately Wet 2.0 - 2.9
- Extremely Wet 3.0 - 4.0
- SWSI Not Applicable