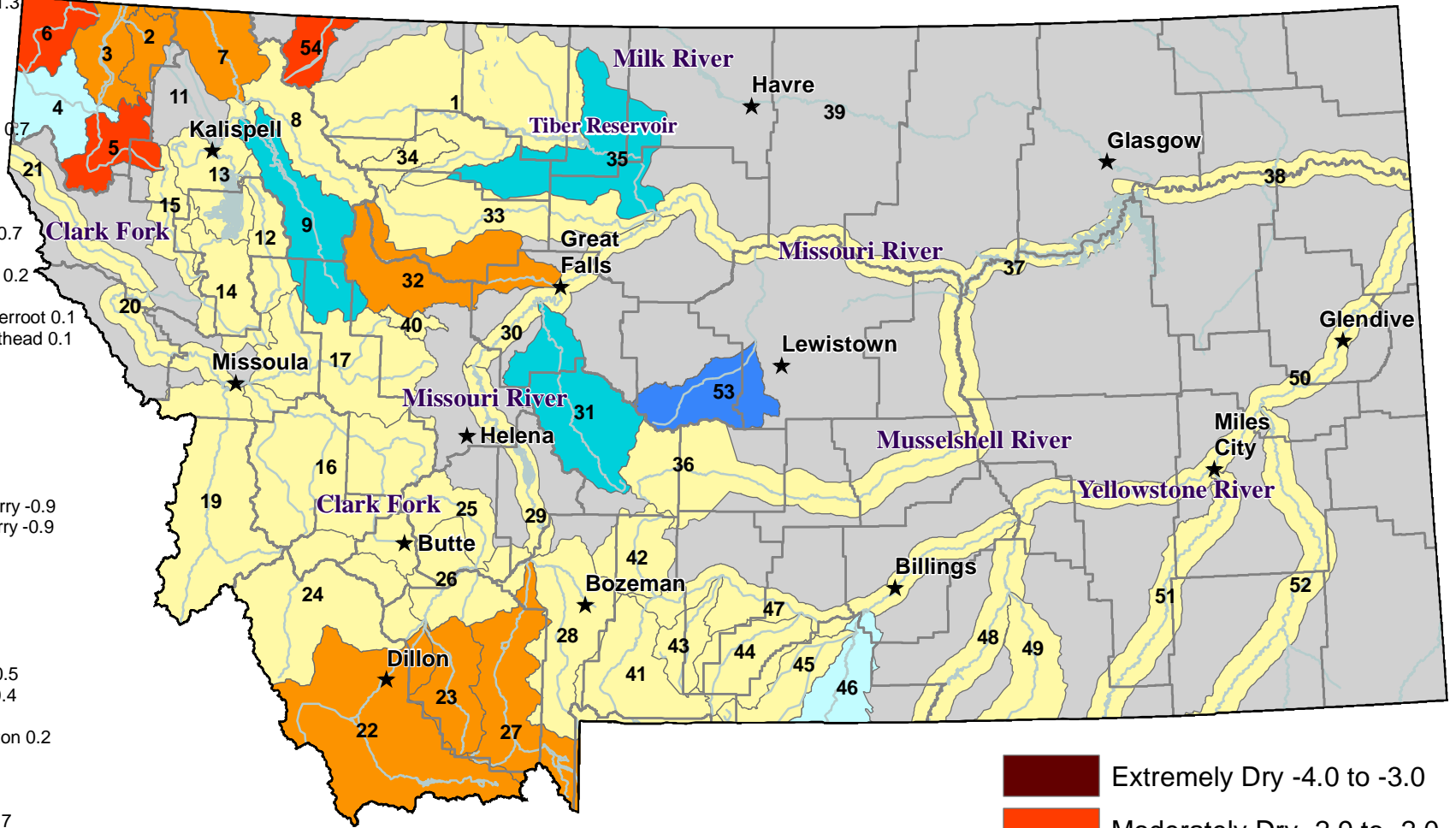


RIVER INDEX & SWSI VALUES

- 1 Marias above Tiber Reservoir -0.7
- 2 Tobacco -1.4
- 3 Kootenai Ft. Steele to Libby Dam -1.4
- 4 Kootenai below Libby Dam 1.3
- 5 Fisher -2.4
- 6 Yaak -2.4
- 7 North Fk. Flathead -1.8
- 8 Middle Fk. Flathead -0.7
- 9 South Fk. Flathead 2.9
- 10 Flathead at Columbia Falls 0.7
- 12 Swan 0.7
- 13 Flathead at Polson 0.2
- 14 Mission Valley 0.2
- 15 Little Bitterroot -0.2
- 16 Clark Fork above Milltown 0.7
- 17 Blackfoot -0.2
- 18 Clark Fork above Missoula 0.2
- 19 Bitterroot -0.2
- 20 Clark Fork River below Bitterroot 0.1
- 21 Clark Fork River below Flathead 0.1
- 22 Beaverhead -1.8
- 23 Ruby -1.8
- 24 Big Hole 0.5
- 25 Boulder (Jefferson) 0.2
- 26 Jefferson -0.4
- 27 Madison -1.8
- 28 Gallatin -0.9
- 29 Missouri above Canyon Ferry -0.9
- 30 Missouri below Canyon Ferry -0.9
- 31 Smith 2.1
- 32 Sun -1.1
- 33 Teton 0.6
- 34 Birch/Dupuyer Creeks -0.5
- 35 Marias 2
- 36 Musselshell 0.9
- 37 Missouri above Fort Peck 0.5
- 38 Missouri below Fort Peck 0.4
- 40 Dearborn near Craig -0.5
- 41 Yellowstone above Livingston 0.2
- 42 Shields -0.7
- 43 Boulder (Yellowstone) 0.2
- 44 Stillwater 0.2
- 45 Rock/Red Lodge Creeks 0.7
- 46 Clarks Fork Yellowstone 1.6
- 47 Yellowstone above Bighorn River 0.4
- 48 Bighorn below Bighorn Lake 0.5
- 49 Little Bighorn 0
- 50 Yellowstone below Bighorn 0.5
- 51 Tongue 0.5
- 52 Powder 0.2
- 53 Upper Judith 3.7
- 54 Saint Mary -2.7

Surface Water Supply Index (SWSI) Values



March 1, 2015

- Extremely Dry -4.0 to -3.0
- Moderately Dry -2.9 to -2.0
- Slightly Dry -1.9 to -1.0
- Near Average -0.9 to 0.9
- Slightly Wet 1.0 to 1.9
- Moderately Wet 2.0 to 2.9
- Extremely Wet 3.0 to 4.0
- SWSI Not Applicable



NOTE: Data used to generate this map are PROVISIONAL and SUBJECT TO CHANGE.