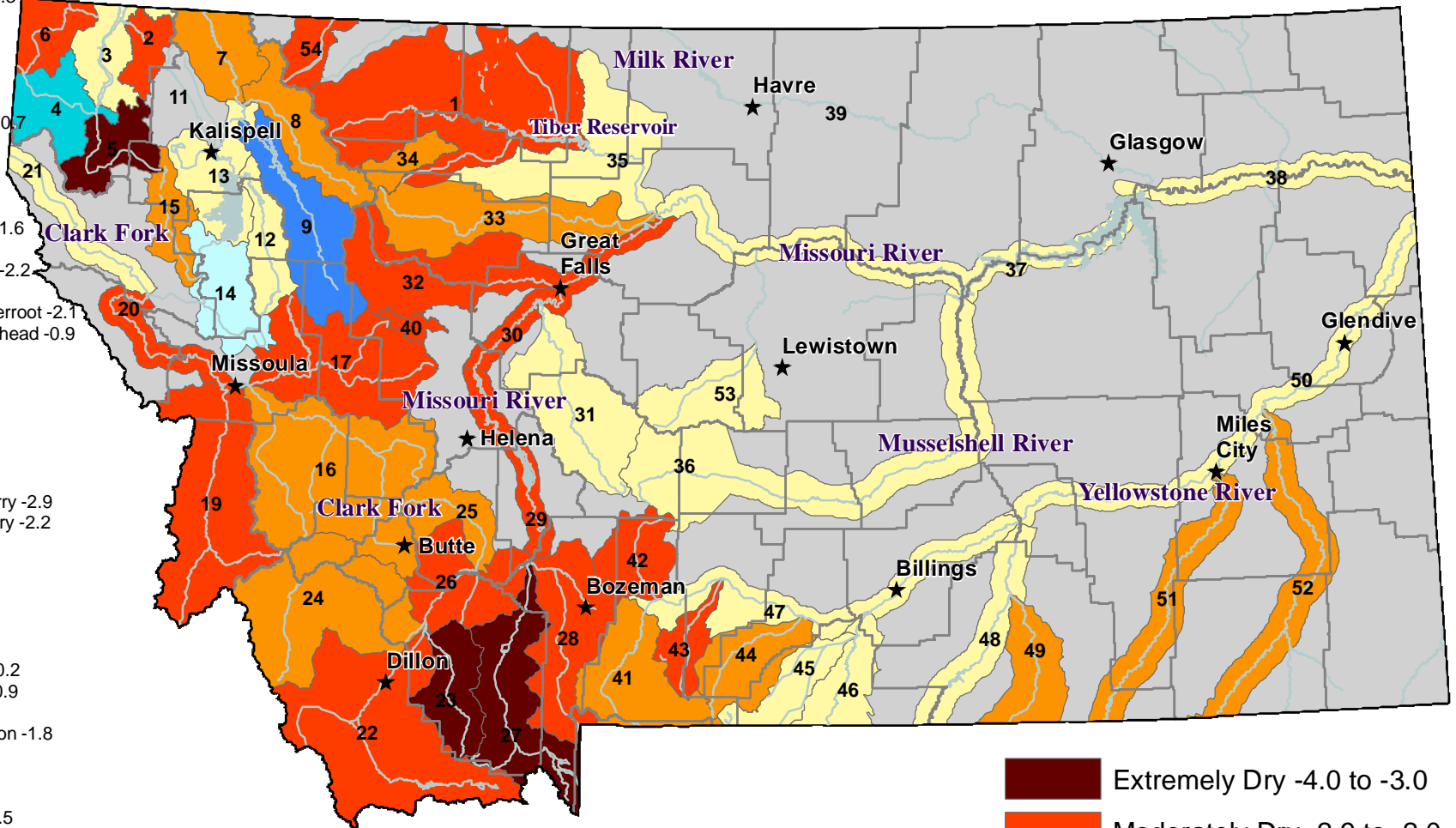


Surface Water Supply Index (SWSI) Values

RIVER INDEX & SWSI VALUES

- 1 Marias above Tiber Reservoir -2.9
- 2 Tobacco -2.9
- 3 Kootenai Ft. Steele to Libby Dam -0.7
- 4 Kootenai below Libby Dam 2.3
- 5 Fisher -3.1
- 6 Yaak -2.2
- 7 North Fk. Flathead -1.8
- 8 Middle Fk. Flathead -1.1
- 9 South Fk. Flathead 3.3
- 10 Flathead at Columbia Falls 0.7
- 12 Swan 0.7
- 13 Flathead at Polson -0.2
- 14 Mission Valley 1.2
- 15 Little Bitterroot -1.6
- 16 Clark Fork above Milltown -1.6
- 17 Blackfoot -2.5
- 18 Clark Fork above Missoula -2.2
- 19 Bitterroot -2
- 20 Clark Fork River below Bitterroot -2.1
- 21 Clark Fork River below Flathead -0.9
- 22 Beaverhead -2.4
- 23 Ruby -4
- 24 Big Hole -1.1
- 25 Boulder (Jefferson) -1.8
- 26 Jefferson -2.4
- 27 Madison -3.3
- 28 Gallatin -2.2
- 29 Missouri above Canyon Ferry -2.9
- 30 Missouri below Canyon Ferry -2.2
- 31 Smith -0.4
- 32 Sun -2.5
- 33 Teton -1.6
- 34 Birch/Dupuyer Creeks -1.3
- 35 Marias -0.7
- 36 Musselshell -0.9
- 37 Missouri above Fort Peck -0.2
- 38 Missouri below Fort Peck -0.9
- 40 Dearborn near Craig -2.7
- 41 Yellowstone above Livingston -1.8
- 42 Shields -2.6
- 43 Boulder (Yellowstone) -2.7
- 44 Stillwater -1.6
- 45 Rock/Red Lodge Creeks -0.5
- 46 Clarks Fork Yellowstone -0.2
- 47 Yellowstone above Bighorn River -0.4
- 48 Bighorn below Bighorn Lake -0.7
- 49 Little Bighorn -1.6
- 50 Yellowstone below Bighorn -0.5
- 51 Tongue -1.8
- 52 Powder -1.1
- 53 Upper Judith -0.3
- 54 Saint Mary -2.7



April 1, 2015

- Extremely Dry -4.0 to -3.0
- Moderately Dry -2.9 to -2.0
- Slightly Dry -1.9 to -1.0
- Near Average -0.9 to 0.9
- Slightly Wet 1.0 to 1.9
- Moderately Wet 2.0 to 2.9
- Extremely Wet 3.0 to 4.0
- SWSI Not Applicable

NOTE: Data used to generate this map are PROVISIONAL and SUBJECT TO CHANGE.