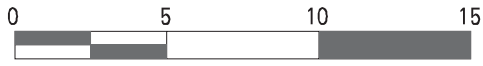
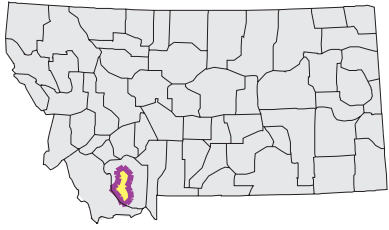
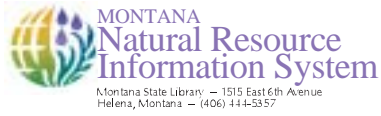


# RUBY Watershed

National Land Cover Database



Mapscale 1: 400000 Scale in miles:



Date created: October 29, 2003

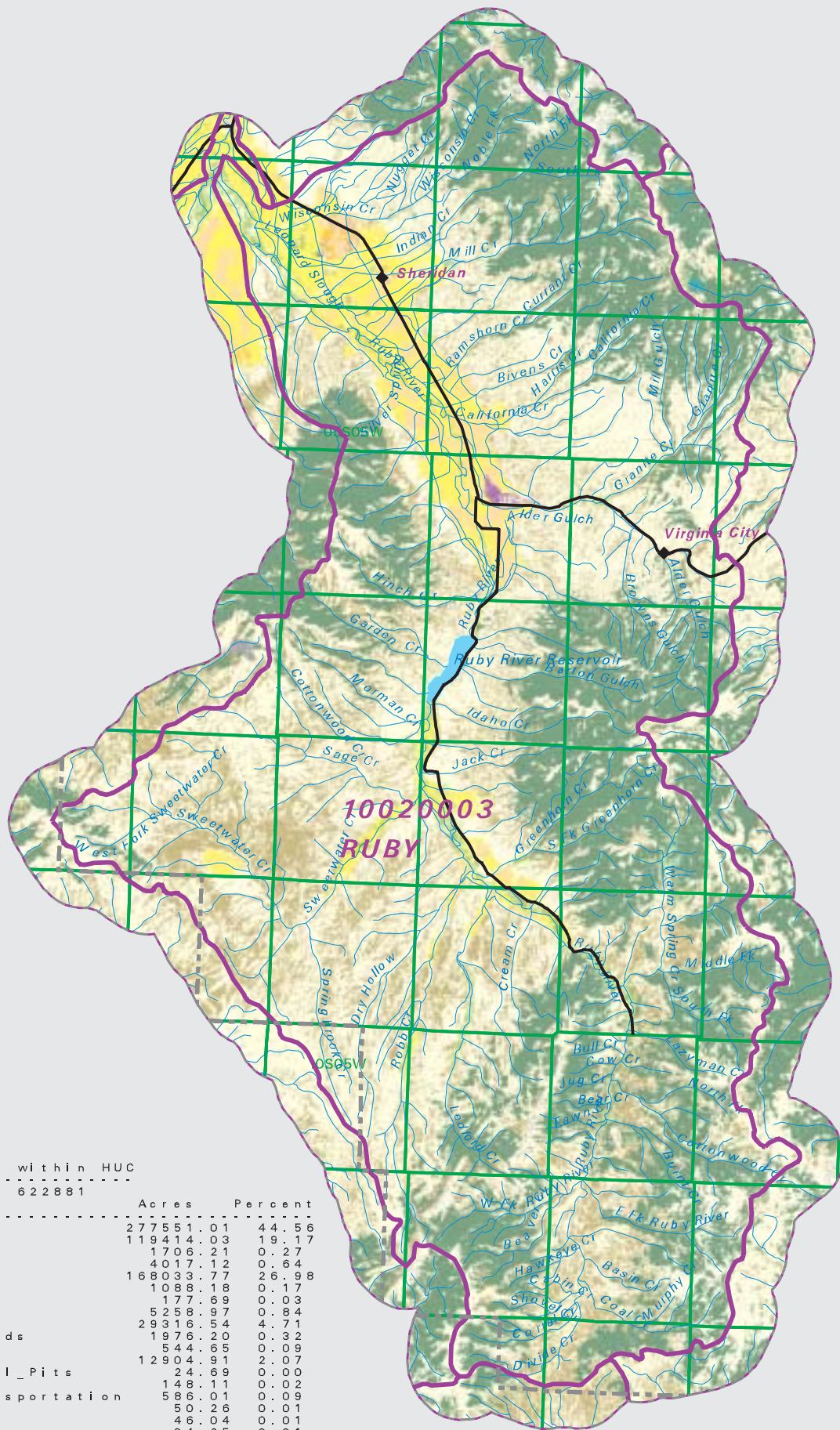
Map Request: O4MSL001 - 10020003 - NLCD

- County Border
- Highway
- Public Land Survey System Townships
- Fourth Code Watersheds
- Open Water
- Perennial Ice/Snow
- Low Intensity Residential
- High Intensity Residential
- Commercial/Industrial Transportation
- Bare Rock/Sand/Clay
- Quarries/Strip Mines Gravel Pits
- Transitional
- Deciduous Forest
- Evergreen Forest
- Mixed Forest
- Shrubland
- Grasslands/Herbaceous
- Pasture/Hay
- Row Crops
- Small Grains
- Fallow
- Urban/Recreational Grasses
- Woody Wetlands
- Emergent Herbaceous Wetlands

**SOURCE:**

US Geological Survey NLCD files.  
 Data from 30-meter Landsat thematic mapper (TM), 1986-1995.  
 This data is intended to display land use patterns, rather than identification of the land use at any particular point.  
 The source data being in raster format, no attempt has been made to summarize the types or limit the legend to the displayed data.

This map is to be used as a primary reference source and is not intended for use in site - specific planning. This is public information and may be interpreted by organizations, agencies, units of government, or others, based on needs; however, they are responsible for the appropriate application. Federal, State, or local regulatory bodies are not to reassign to the Natural Resource Information System any authority for the decisions they make.



Summary Table of Landcover within HUC		
HUC 10020003 : Total Acres 622881		
Owner	Acres	Percent
Grasslands/Herbaceous	277551.01	44.56
Shrubland	119414.03	19.17
Bare Rock/Sand/Clay	1706.21	0.27
Deciduous Forest	4017.12	0.64
Evergreen Forest	168033.77	26.98
Open Water	1082.18	0.17
Mixed Forest	177.69	0.03
Woody Wetlands	5258.97	0.84
Pasture/Hay	29316.54	4.71
Emergent Herbaceous Wetlands	1976.20	0.32
Row Crops	544.65	0.09
Small Grains	12904.91	2.07
Quarries/Strip Mines/Gravel Pits	24.69	0.00
Fallow	148.11	0.02
Commercial/Industrial/Transportation	586.01	0.09
Urban/Recreational Grasses	50.26	0.01
Low Intensity Residential	46.04	0.01
Perennial Ice/Snow	34.25	0.01
High Intensity Residential	2.45	0.00
Transitional	0.22	0.00
Acres =	622881.30	