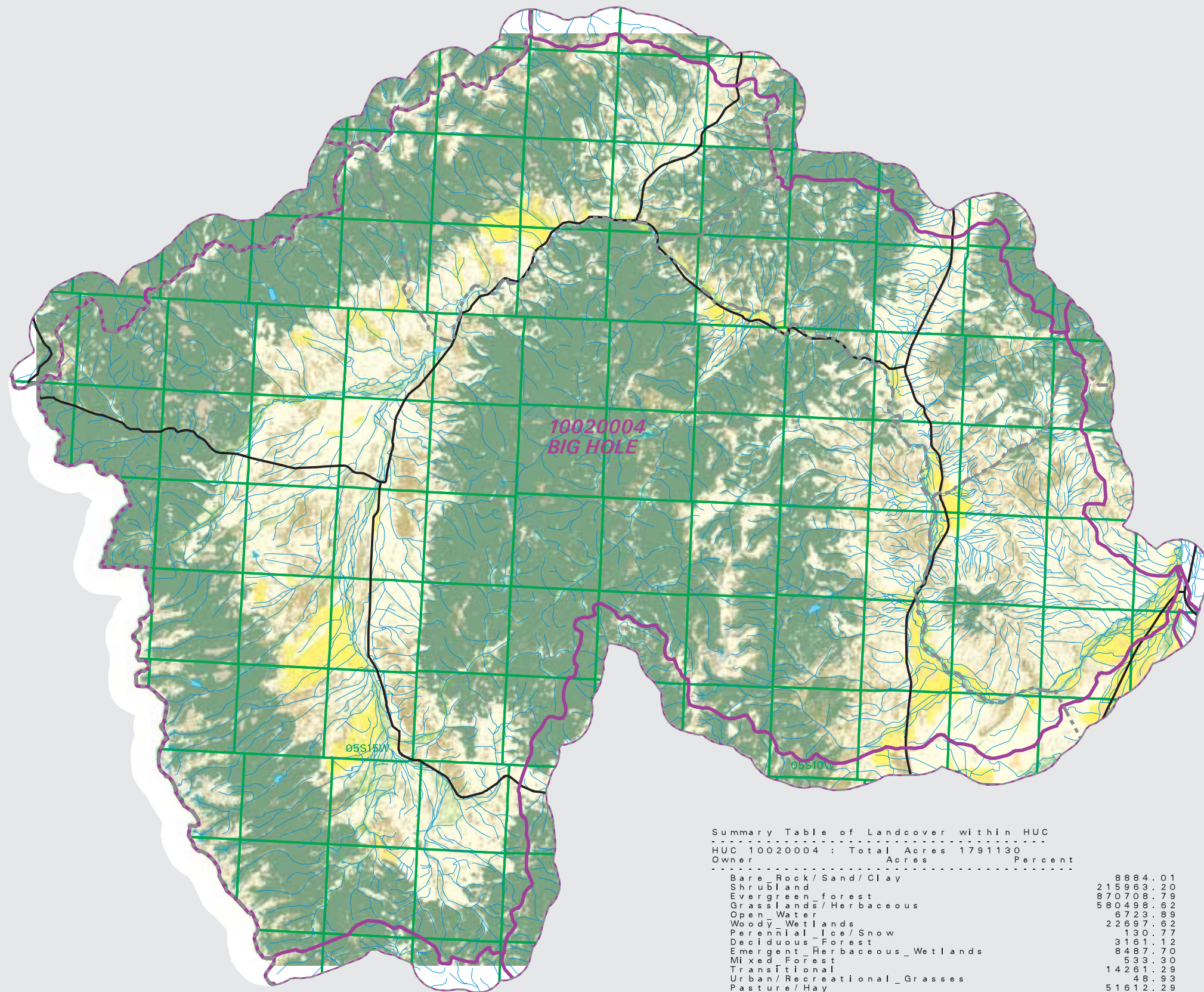


BIG HOLE Watershed

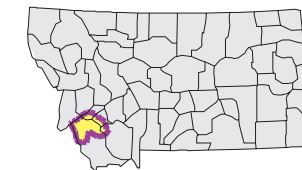
National Land Cover Database

- County Border
- Highway
- Public Land Survey System Townships
- Fourth Code Watersheds
- Open Water
- Perennial Ice/Snow
- Low Intensity Residential
- High Intensity Residential
- Commercial/Industrial Transportation
- Bare Rock/Sand/Clay
- Quarries/Strip Mines Gravel Pits
- Transitional
- Deciduous Forest
- Evergreen Forest
- Mixed Forest
- Shrubland
- Grasslands/Herbaceous
- Pasture/Hay
- Row Crops
- Small Grains
- Fallow
- Urban/Recreational Grasses
- Woody Wetlands
- Emergent Herbaceous Wetlands

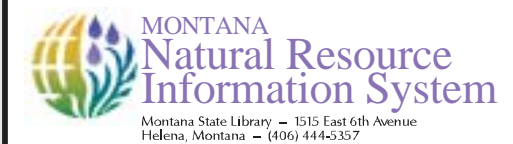


SOURCE:
 US Geological Survey NLCD files.
 Data from 30-meter Landsat thematic mapper (TM), 1986-1995.
 This data is intended to display land use patterns, rather than identification of the land use at any particular point.
 The source data being in raster format, no attempt has been made to summarize the types or limit the legend to the displayed data.

This map is to be used as a primary reference source and is not intended for use in site - specific planning. This is public information and may be interpreted by organizations, agencies, units of government, or others, based on needs; however, they are responsible for the appropriate application. Federal, State, or local regulatory bodies are not to reassign to the Natural Resource Information System any authority for the decisions they make.



Mapscale 1: 488000, Scale in miles:



Date created: October 28, 2003

Map Request: 04MSL0001 - 10020004 - NLCD

Summary Table of Landcover within HUC		
HUC 10020004 : Total Acres 1791130		
Owner	Acres	Percent
Bare Rock/Sand/Clay	8884.01	0.50
Shrubland	215963.20	12.06
Evergreen_forest	870708.79	48.61
Grasslands/Herbaceous	580498.62	32.41
Open Water	6723.89	0.38
Woody Wetlands	22697.62	1.27
Perennial_Ice/Snow	130.77	0.01
Deciduous Forest	3161.12	0.18
Emergent_Herbaceous_Wetlands	8487.70	0.47
Mixed Forest	533.30	0.03
Transitional	14261.29	0.80
Urban/Recreational_Grasses	48.93	0.00
Pasture/Hay	51612.29	2.88
Small Grains	5984.87	0.33
Low_Intensity_Residential	62.05	0.00
Commercial/Industrial/Transportation	988.77	0.06
Row Crops	376.29	0.02
High_Intensity_Residential	6.89	0.00
Acres =	1791130.40	