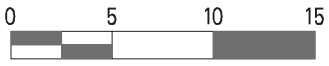
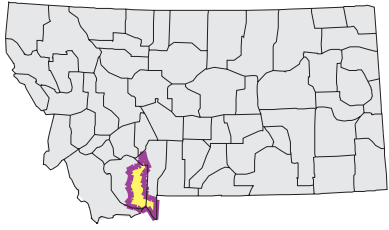
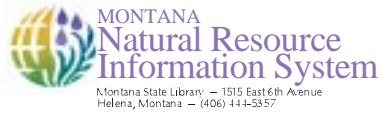


MADISON Watershed

National Land Cover Database



Mapscale 1: 600000 Scale in miles:



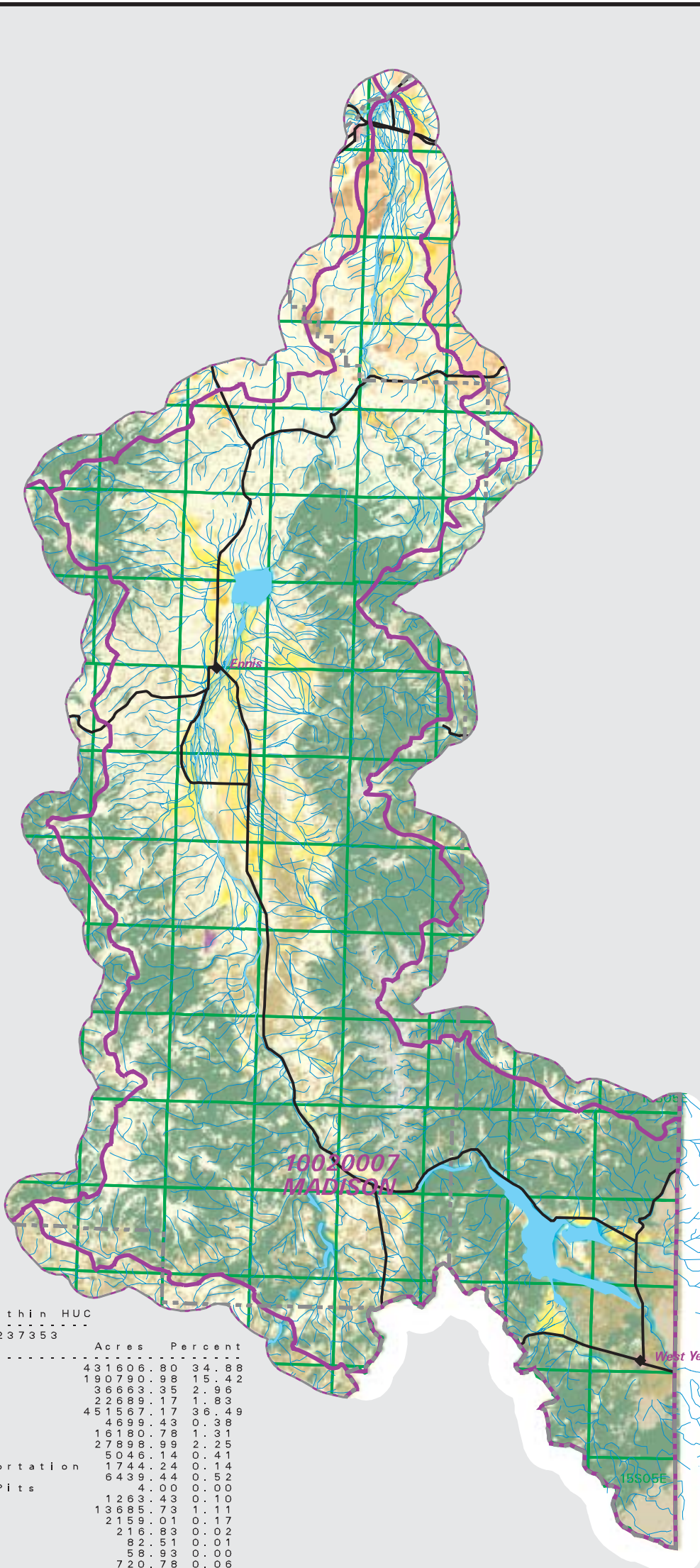
Date created: October 29, 2003

Map Request: 04MSL0001 - 10020007 - NLCD

- County Border
- Highway
- Public Land Survey System Townships
- Fourth Code Watersheds
- Open Water
- Perennial Ice/Snow
- Low Intensity Residential
- High Intensity Residential
- Commercial/Industrial Transportation
- Bare Rock/Sand/Clay
- Quarries/Strip Mines Gravel Pits
- Transitional
- Deciduous Forest
- Evergreen Forest
- Mixed Forest
- Shrubland
- Grasslands/Herbaceous
- Pasture/Hay
- Row Crops
- Small Grains
- Fallow
- Urban/Recreational Grasses
- Woody Wetlands
- Emergent Herbaceous Wetlands

SOURCE:
US Geological Survey NLCD files.
Data from 30-meter Landsat thematic mapper (TM), 1986-1995.
This data is intended to display land use patterns, rather than identification of the land use at any particular point.
The source data being in raster format, no attempt has been made to summarize the types or limit the legend to the displayed data.

This map is to be used as a primary reference source and is not intended for use in site - specific planning. This is public information and may be interpreted by organizations, agencies, units of government, or others, based on needs; however, they are responsible for the appropriate application. Federal, State, or local regulatory bodies are not to reassign to the Natural Resource Information System any authority for the decisions they make.



Summary Table of Landcover within HUC

HUC 10020007 : Total Acres 1237353

Owner	Acres	Percent
Grasslands/Herbaceous	431606.80	34.88
Shrubland	190790.98	15.42
Pasture/Hay	36663.35	2.96
Open Water	22689.17	1.83
Evergreen forest	451567.17	36.49
Woody Wetlands	4699.43	0.38
Deciduous Forest	16180.78	1.31
Small Grains	27898.99	2.25
Row Crops	5048.14	0.41
Commercial/Industrial/Transportation	1744.24	0.14
Fallow	6439.44	0.52
Quarries/Strip Mines/Gravel Pits	4.00	0.00
Mixed Forest	1263.43	0.10
Bare Rock/Sand/Clay	13685.73	1.11
Emergent Herbaceous Wetlands	2159.01	0.17
Low Intensity Residential	216.83	0.02
High Intensity Residential	82.51	0.01
Urban/Recreational Grasses	58.93	0.00
Perennial Ice/Snow	720.78	0.06
Transitional	23835.61	1.93
Acres =	1237353.34	