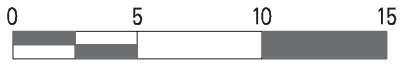
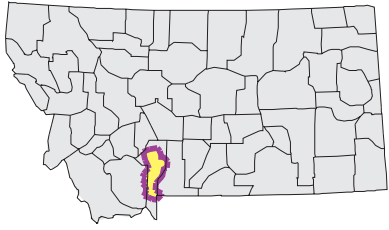
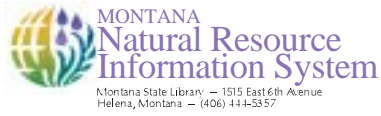


GALLATIN Watershed

National Land Cover Database



Mapscale 1: 488000 Scale in miles:



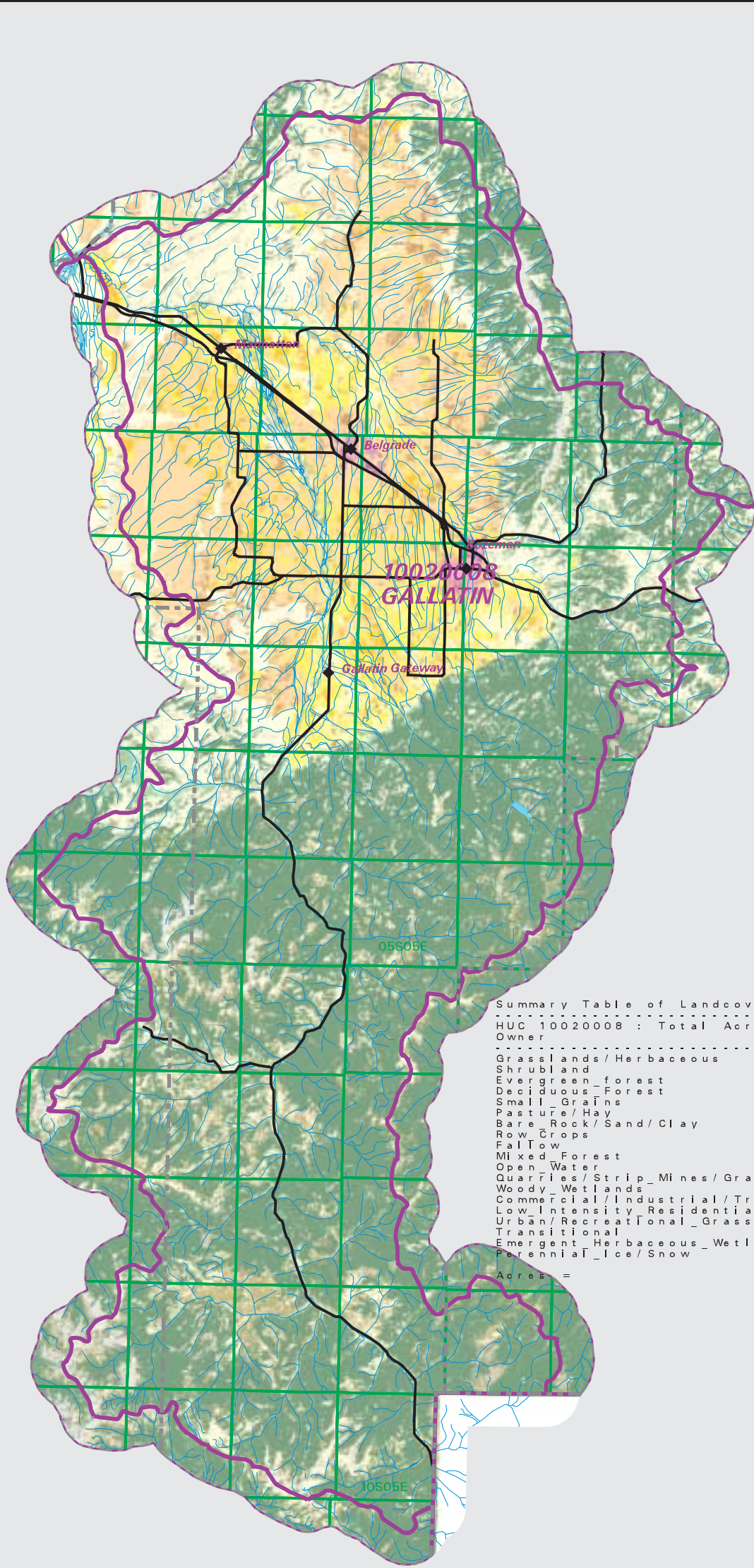
Date created: October 28, 2003

Map Request: 04MSL0001 - 10020008 - NLCD

- County Border
- Highway
- Public Land Survey System Townships
- Fourth Code Watersheds
- Open Water
- Perennial Ice/Snow
- Low Intensity Residential
- High Intensity Residential
- Commercial/Industrial Transportation
- Bare Rock/Sand/Clay
- Quarries/Strip Mines Gravel Pits
- Transitional
- Deciduous Forest
- Evergreen Forest
- Mixed Forest
- Shrubland
- Grasslands/Herbaceous
- Pasture/Hay
- Row Crops
- Small Grains
- Fallow
- Urban/Recreational Grasses
- Woody Wetlands
- Emergent Herbaceous Wetlands

SOURCE:
US Geological Survey NLCD files.
Data from 30-meter Landsat thematic mapper (TM), 1986-1995.
This data is intended to display land use patterns, rather than identification of the land use at any particular point.
The source data being in raster format, no attempt has been made to summarize the types or limit the legend to the displayed data.

This map is to be used as a primary reference source and is not intended for use in site - specific planning. This is public information and may be interpreted by organizations, agencies, units of government, or others, based on needs; however, they are responsible for the appropriate application. Federal, State, or local regulatory bodies are not to reassign to the Natural Resource Information System any authority for the decisions they make.



Summary Table of Landcover within HUC
HUC 10020008 : Total Acres 1122170

Owner	Acres	Percent
Grasslands / Herbaceous	228116.63	20.33
Shrubland	86554.75	7.71
Evergreen_Forest	492739.39	43.91
Deciduous_Forest	26376.03	2.35
Small_Grains	132744.16	11.83
Pasture/Hay	76700.65	6.84
Bare_Rock/Sand/Clay	11009.88	0.98
Row_Crops	21133.74	1.88
Fallow	27465.99	2.45
Mixed_Forest	1945.51	0.17
Open_Water	1683.75	0.15
Quarries/Strip_Mines/Gravel_Pits	37.14	0.00
Woody_Wetlands	1420.66	0.13
Commercial/Industrial/Transportation	3666.40	0.33
Low_Intensity_Residential	3291.67	0.29
Urban/Recreational_Grasses	1539.42	0.14
Transitional	3932.83	0.35
Emergent_Herbaceous_Wetlands	498.39	0.04
Perennial_Ice/Snow	1312.57	0.12
Acres =	1122169.55	