

Summary Table of Landcover within HUC		

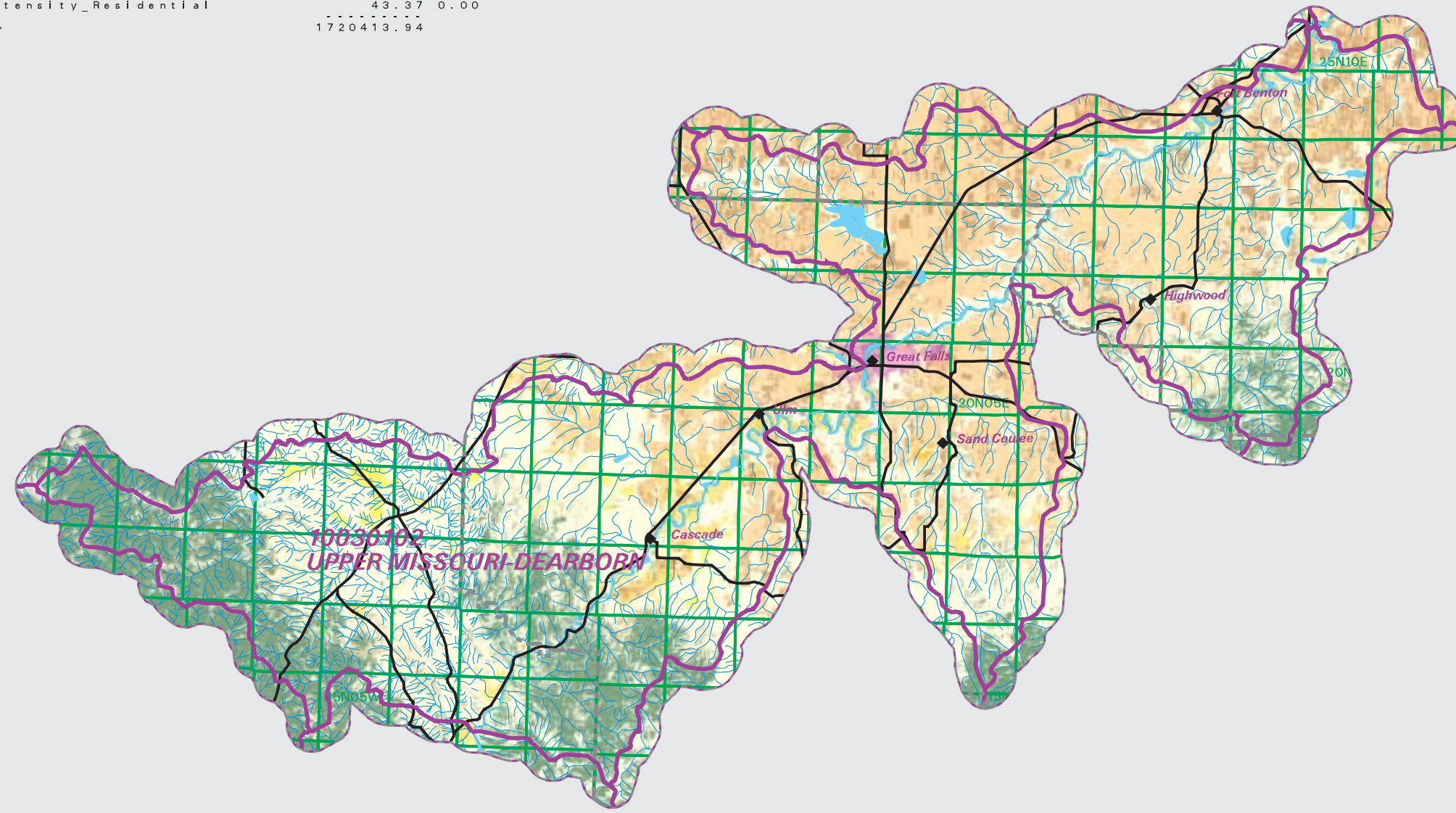
HUC 10030102 : Total Acres 1720414		
Owner	Acres	Percent

Deciduous Forest	7514.28	0.44
Shrubland	61021.81	3.55
Grasslands/Herbaceous	763080.13	44.35
Open Water	15004.31	0.87
Fallow	149490.49	8.69
Small Grains	419813.22	24.40
Woody Wetlands	5702.43	0.33
Evergreen forest	224612.13	13.06
Bare Rock/Sand/Clay	4531.74	0.26
Row Crops	3969.30	0.23
Pasture/Hay	39928.11	2.32
Commercial/Industrial/Transportation	6562.87	0.38
Low Intensity Residential	7533.63	0.44
Urban/Recreational Grasses	4581.11	0.27
Quarries/Strip Mines/Gravel Pits	423.88	0.02
Emergent Herbaceous Wetlands	3977.09	0.23
Perennial Ice/Snow	30.91	0.00
Mixed Forest	2544.20	0.15
Transitional	48.93	0.00
High Intensity Residential	43.37	0.00
Acres =	1720413.94	

UPPER MISSOURI-DEARBORN Watershed

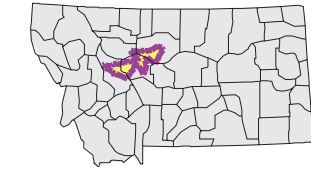
National Land Cover Database

- County Border
- Highway
- Public Land Survey System Townships
- Fourth Code Watersheds
- Open Water
- Perennial Ice/Snow
- Low Intensity Residential
- High Intensity Residential
- Commercial/Industrial Transportation
- Bare Rock/Sand/Clay
- Quarries/Strip Mines Gravel Pits
- Transitional
- Deciduous Forest
- Evergreen Forest
- Mixed Forest
- Shrubland
- Grasslands/Herbaceous
- Pasture/Hay
- Row Crops
- Small Grains
- Fallow
- Urban/Recreational Grasses
- Woody Wetlands
- Emergent Herbaceous Wetlands

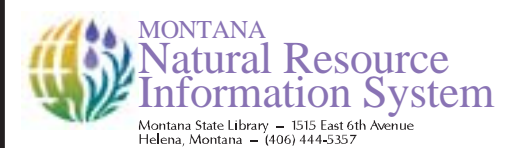


SOURCE:
 US Geological Survey NLCD files.
 Data from 30-meter Landsat thematic mapper (TM), 1986-1995.
 This data is intended to display land use patterns, rather than identification of the land use at any particular point.
 The source data being in raster format, no attempt has been made to summarize the types or limit the legend to the displayed data.

This map is to be used as a primary reference source and is not intended for use in site - specific planning. This is public information and may be interpreted by organizations, agencies, units of government, or others, based on needs; however, they are responsible for the appropriate application. Federal, State, or local regulatory bodies are not to reassign to the Natural Resource Information System any authority for the decisions they make.



Mapscale 1: 760000, Scale in miles:



Montana State Library - 1515 East 6th Avenue
 Helena, Montana - (406) 444-5357

Date created: October 31, 2003
 Map Request: 04MSL0001 - 10030102 - NLCD