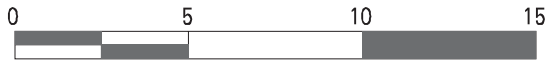
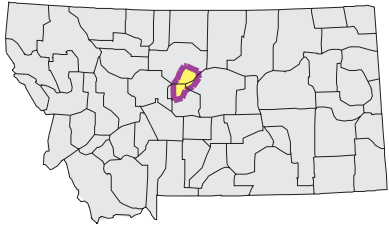
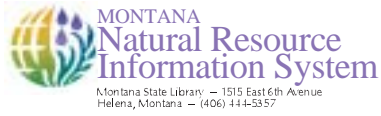


# ARROW Watershed

National Land Cover Database



Mapscale 1: 350000 Scale In miles:



Date created: October 27, 2003

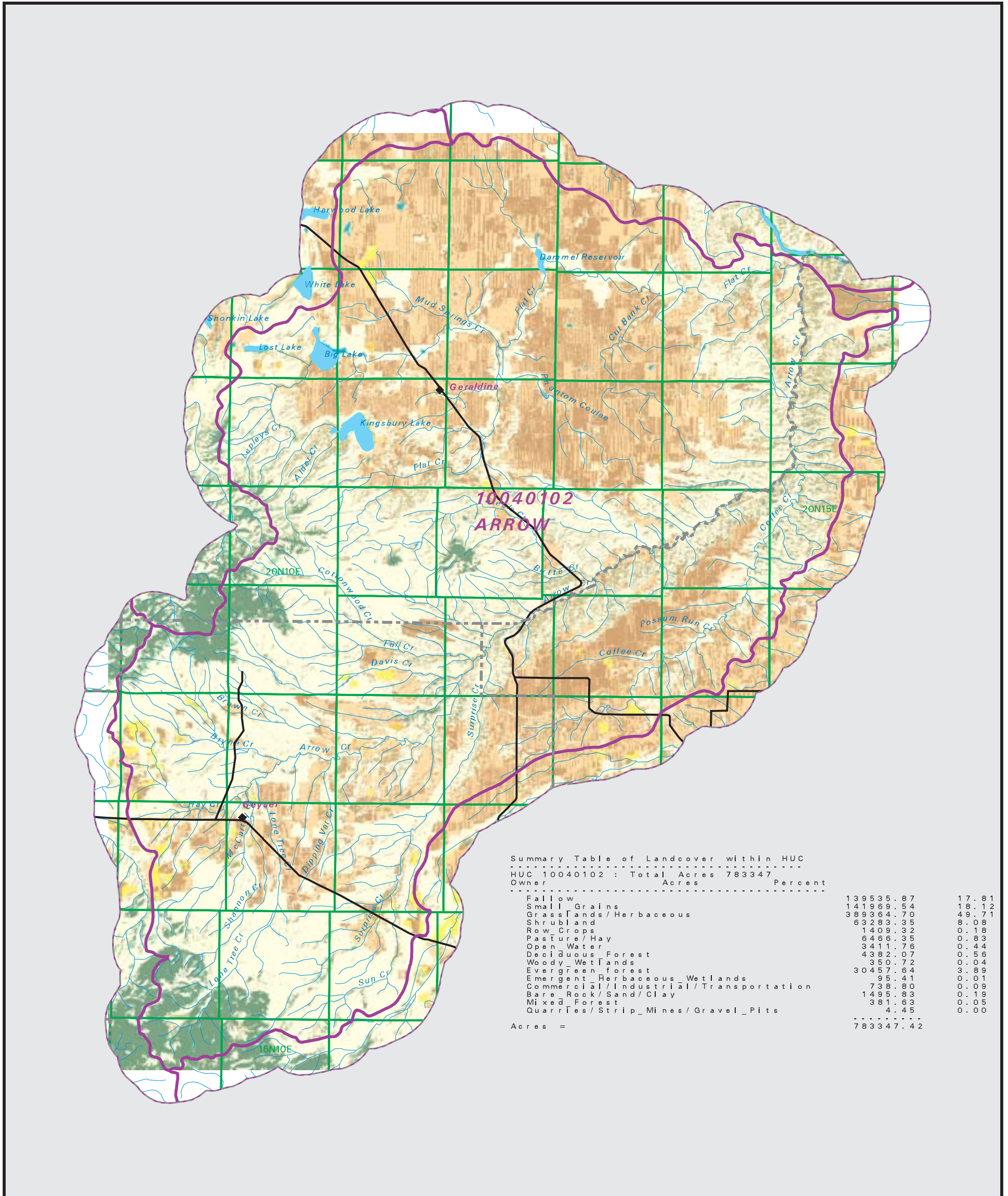
Map Request: 04MSL0001 - 10040102 - NLCD

- County Border
- Highway
- Public Land Survey System Townships
- Fourth Code Watersheds
- Open Water
- Low Intensity Residential
- Commercial/Industrial Transportation
- Bare Rock/Sand/Clay
- Quarries/Strip Mines Gravel Pits
- Deciduous Forest
- Evergreen Forest
- Mixed Forest
- Shrubland
- Grasslands/Herbaceous
- Pasture/Hay
- Row Crops
- Small Grains
- Fallow
- Urban/Recreational Grasses
- Woody Wetlands
- Emergent Herbaceous Wetlands

**SOURCE:**

US Geological Survey NLCD files.  
Data from 30-meter Landsat thematic mapper (TM), 1986-1995.  
This data is intended to display land use patterns, rather than identification of the land use at any particular point.  
The source data being in raster format, no attempt has been made to summarize the types or limit the legend to the displayed data.

This map is to be used as a primary reference source and is not intended for use in site - specific planning. This is public information and may be interpreted by organizations, agencies, units of government, or others, based on needs; however, they are responsible for the appropriate application. Federal, State, or local regulatory bodies are not to reassign to the Natural Resource Information System any authority for the decisions they make.



Summary Table of Landcover within HUC		
HUC 10040102 : Total Acres 783347		
Owner	Acres	Percent
Fallow	139535.87	17.81
Small Grains	141969.54	18.12
Grasslands/Herbaceous	389364.70	49.71
Shrubland	63283.35	8.08
Row Crops	1409.32	0.18
Pasture/Hay	6466.35	0.83
Open Water	3411.76	0.44
Deciduous Forest	4382.07	0.56
Woody Wetlands	350.72	0.04
Emergent Herbaceous Wetlands	30457.64	3.89
Commercial/Industrial/Transportation	95.41	0.01
Bare Rock/Sand/Clay	738.80	0.09
Mixed Forest	1495.83	0.19
Quarries/Strip_Mines/Gravel_Pits	381.63	0.05
	4.45	0.00
Acres =	783347.42	