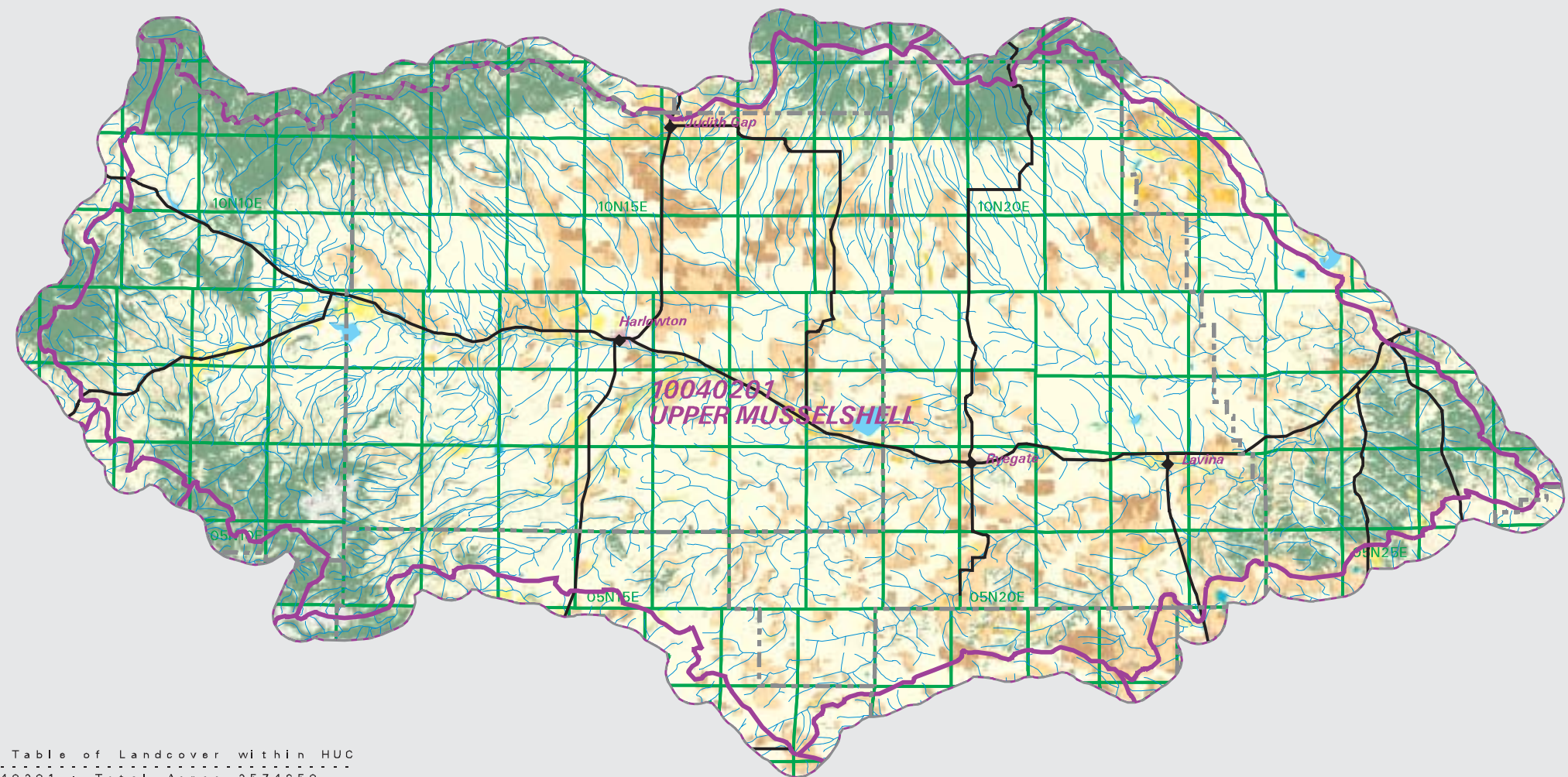


# UPPER MUSSELSHELL Watershed

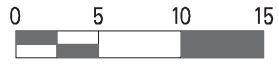
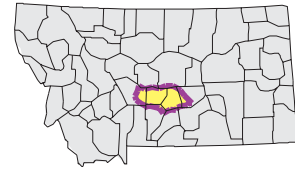
## National Land Cover Database

- County Border
- Highway
- Public Land Survey System Townships
- Fourth Code Watersheds
- Open Water
- Perennial Ice/Snow
- Low Intensity Residential
- Commercial/Industrial Transportation
- Bare Rock/Sand/Clay
- Quarries/Strip Mines Gravel Pits
- Transitional
- Deciduous Forest
- Evergreen Forest
- Mixed Forest
- Shrubland
- Grasslands/Herbaceous
- Pasture/Hay
- Row Crops
- Small Grains
- Fallow
- Urban/Recreational Grasses
- Woody Wetlands
- Emergent Herbaceous Wetlands



SOURCE:  
 US Geological Survey NLCD files.  
 Data from 30-meter Landsat thematic mapper (TM), 1986-1995.  
 This data is intended to display land use patterns, rather than identification of the land use at any particular point.  
 The source data being in raster format, no attempt has been made to summarize the types or limit the legend to the displayed data.

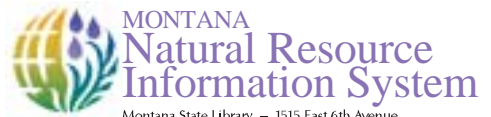
This map is to be used as a primary reference source and is not intended for use in site - specific planning. This is public information and may be interpreted by organizations, agencies, units of government, or others, based on needs; however, they are responsible for the appropriate application. Federal, State, or local regulatory bodies are not to reassign to the Natural Resource Information System any authority for the decisions they make.



Mapscale 1: 736000, Scale in miles:

Summary Table of Landcover within HUC  
 HUC 10040201 : Total Acres 2574950

Owner	Acres	Percent
Evergreen_forest	354263.59	13.76
Grasslands/Herbaceous	1590649.45	61.77
Bare_Rock/Sand/Clay	12160.55	0.47
Deciduous_Forest	49132.13	1.91
Shrubland	101906.67	3.96
Fallow	13881.99	5.39
Small_Grains	277917.42	10.77
Mixed_Forest	64.72	0.00
Transitional	2035.81	0.08
Quarries/Strip_Mines/Gravel_Pits	167.02	0.01
Pasture/Hay	27765.55	1.08
Row_Crops	9447.11	0.37
Open_Water	5643.27	0.22
Commercial/Industrial/Transportation	2996.33	0.12
Low_Intensity_Residential	330.26	0.01
Urban/Recreational_Grasses	216.61	0.01
Woody_Wetlands	620.04	0.02
Emergent_Herbaceous_Wetlands	1371.95	0.05
Acres =	2574950.45	



Montana State Library - 1515 East 6th Avenue  
 Helena, Montana - (406) 444-5357

Date created: November 01, 2003

Map Request: 04MSL0001 - 10040201 - NLCD