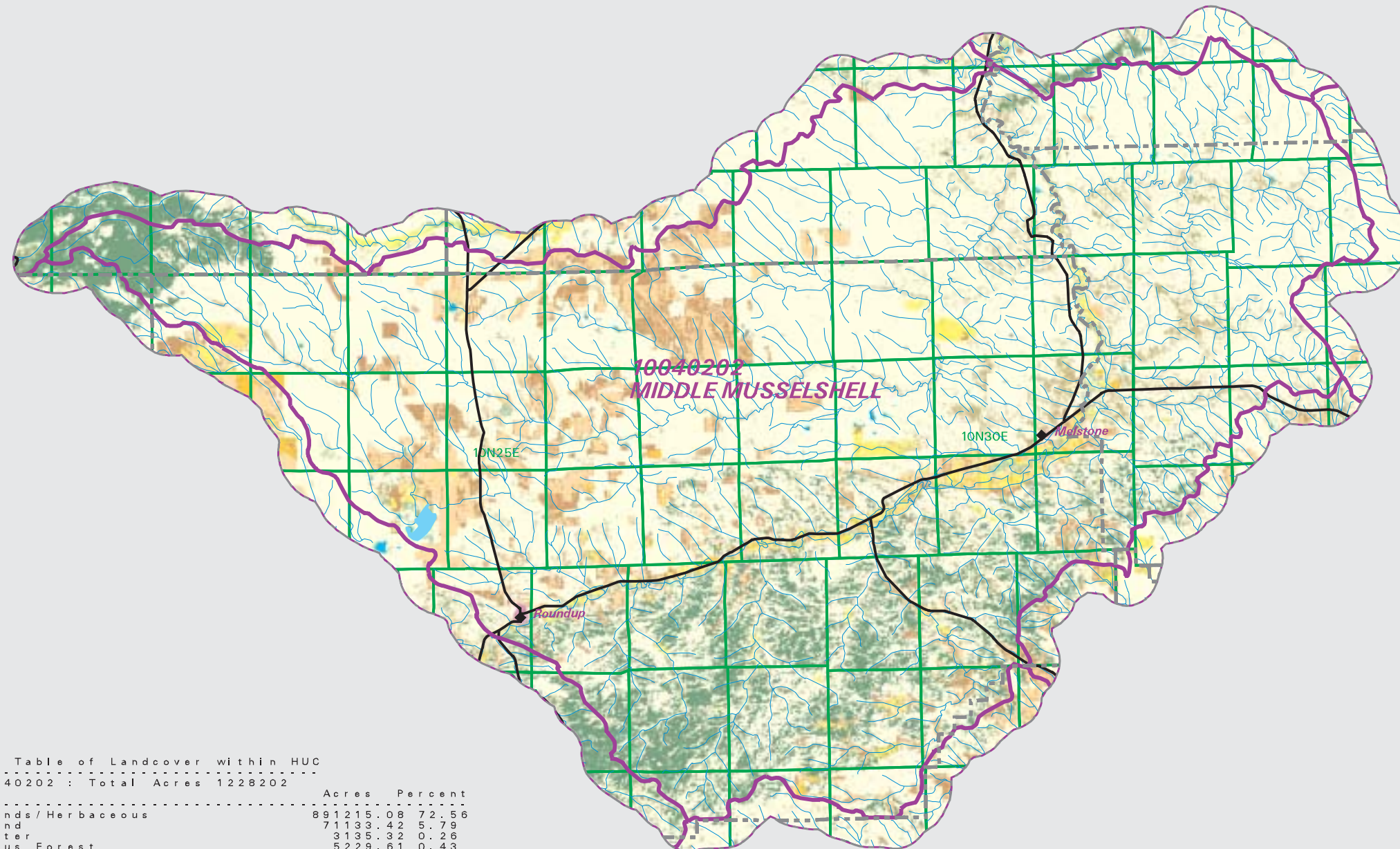


# MIDDLE MUSSELSHELL Watershed

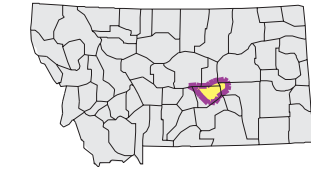
## National Land Cover Database

- County Border
- Highway
- Public Land Survey System Townships
- Fourth Code Watersheds
- Open Water
- Low Intensity Residential
- Commercial/Industrial Transportation
- Bare Rock/Sand/Clay
- Quarries/Strip Mines Gravel Pits
- Deciduous Forest
- Evergreen Forest
- Mixed Forest
- Shrubland
- Grasslands/Herbaceous
- Pasture/Hay
- Row Crops
- Small Grains
- Fallow
- Urban/Recreational Grasses
- Woody Wetlands
- Emergent Herbaceous Wetlands



SOURCE:  
 US Geological Survey NLCD files.  
 Data from 30-meter Landsat thematic mapper (TM), 1986-1995.  
 This data is intended to display land use patterns, rather than identification of the land use at any particular point.  
 The source data being in raster format, no attempt has been made to summarize the types or limit the legend to the displayed data.

This map is to be used as a primary reference source and is not intended for use in site - specific planning. This is public information and may be interpreted by organizations, agencies, units of government, or others, based on needs; however, they are responsible for the appropriate application. Federal, State, or local regulatory bodies are not to reassign to the Natural Resource Information System any authority for the decisions they make.

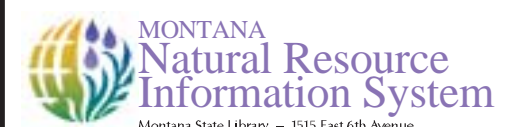


Mapscale 1: 512000, Scale in miles:

Summary Table of Landcover within HUC

HUC 10040202 : Total Acres 1228202

Owner	Acres	Percent
Grasslands/Herbaceous	891215.08	72.56
Shrubland	71133.42	5.79
Open Water	3135.32	0.26
Deciduous Forest	5229.61	0.43
Pasture/Hay	16173.22	1.32
Evergreen forest	115239.67	9.38
Bare Rock/Sand/Clay	159.68	0.01
Woody Wetlands	761.04	0.06
Small Grains	66030.12	5.38
Fallow	53393.22	4.35
Row Crops	3409.76	0.28
Emergent Herbaceous Wetlands	408.09	0.03
Mixed Forest	257.31	0.02
Commercial/Industrial/Transportation	1058.38	0.09
Quarries/Strip Mines/Gravel Pits	84.29	0.01
Low Intensity Residential	472.59	0.04
Urban/Recreational Grasses	41.37	0.00
Acres =	1228202.16	



Montana State Library - 1515 East 6th Avenue  
 Helena, Montana - (406) 444-5357

Date created: November 01, 2003

Map Request: 04MSL0001 - 10040202 - NLCD