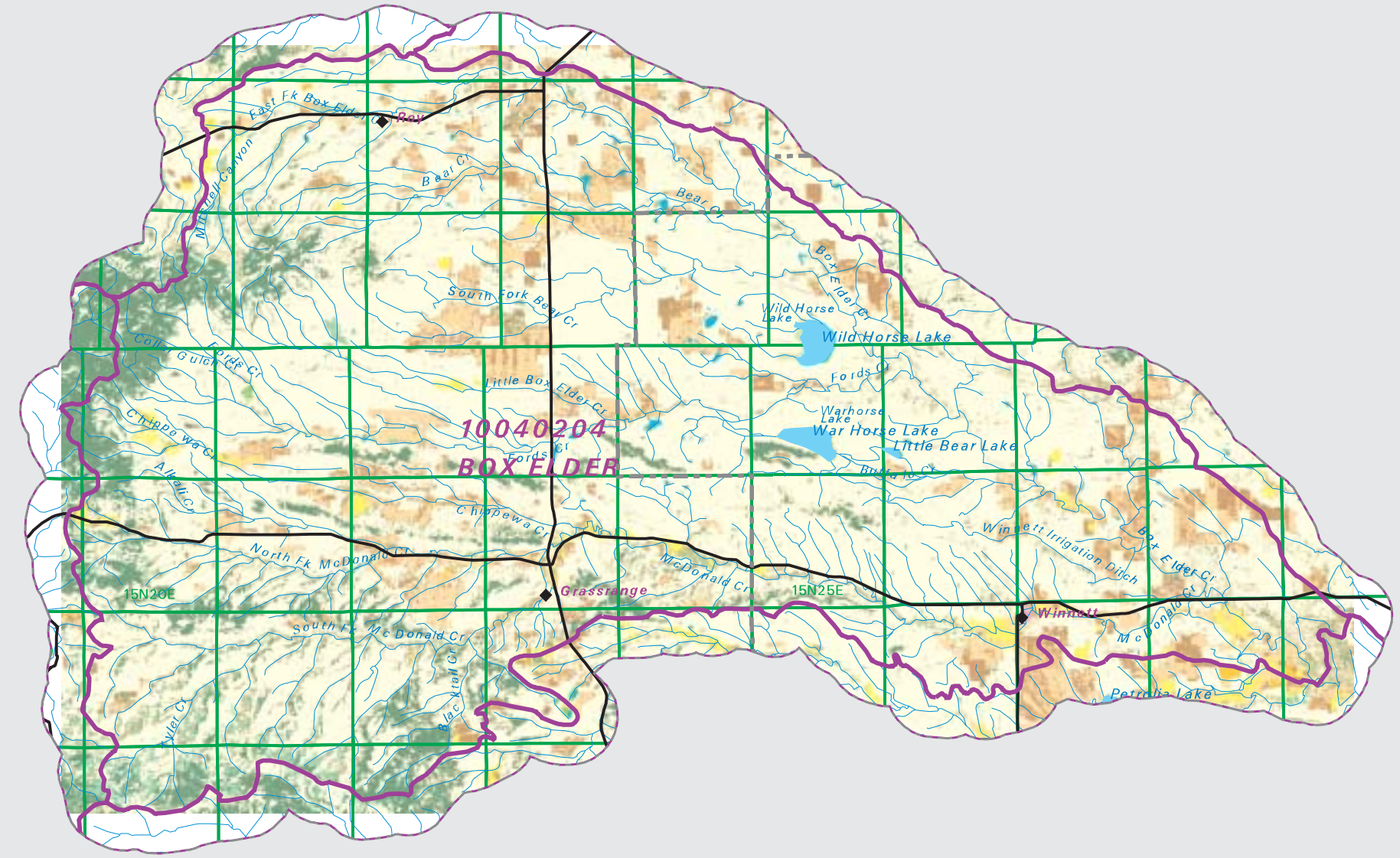


# BOX ELDER

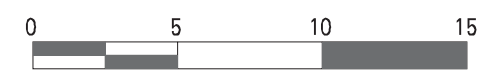
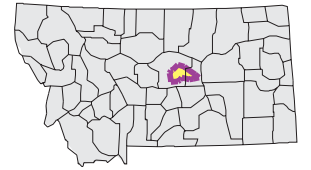
## Watershed National Land Cover Database

- County Border
- Highway
- Public Land Survey System Townships
- Fourth Code Watersheds
- Open Water
- Low Intensity Residential
- Commercial/Industrial Transportation
- Bare Rock/Sand/Clay
- Quarries/Strip Mines Gravel Pits
- Transitional
- Deciduous Forest
- Evergreen Forest
- Mixed Forest
- Shrubland
- Grasslands/Herbaceous
- Pasture/Hay
- Row Crops
- Small Grains
- Fallow
- Urban/Recreational Grasses
- Woody Wetlands
- Emergent Herbaceous Wetlands



SOURCE:  
US Geological Survey NLCD files.  
Data from 30-meter Landsat thematic mapper (TM), 1986-1995.  
This data is intended to display land use patterns, rather than identification of the land use at any particular point.  
The source data being in raster format, no attempt has been made to summarize the types or limit the legend to the displayed data.

This map is to be used as a primary reference source and is not intended for use in site - specific planning. This is public information and may be interpreted by organizations, agencies, units of government, or others, based on needs; however, they are responsible for the appropriate application. Federal, State, or local regulatory bodies are not to reassign to the Natural Resource Information System any authority for the decisions they make.



Mapscale 1: 420000, Scale in miles:



Date created: October 28, 2003

Map Request: 04MSL0001 - 10040204 - NLCD

| Summary Table of Landcover within HUC |           |         |
|---------------------------------------|-----------|---------|
| HUC 10040204 : Total Acres 747456     |           |         |
| Owner                                 | Acres     | Percent |
| Grasslands/Herbaceous                 | 535802.81 | 71.68   |
| Shrubland                             | 43056.31  | 5.76    |
| Fallow                                | 38346.21  | 5.13    |
| Small Grains                          | 50386.67  | 6.74    |
| Open Water                            | 4187.47   | 0.56    |
| Evergreen forest                      | 51021.16  | 6.83    |
| Woody Wetlands                        | 596.02    | 0.08    |
| Pasture/Hay                           | 8172.79   | 1.09    |
| Deciduous Forest                      | 12739.00  | 1.70    |
| Row Crops                             | 504.61    | 0.07    |
| Commercial/Industrial/Transportation  | 664.52    | 0.09    |
| Urban/Recreational Grasses            | 13.79     | 0.00    |
| Low Intensity Residential             | 182.14    | 0.02    |
| Quarries/Strip Mines/Gravel Pits      | 145.89    | 0.02    |
| Mixed Forest                          | 1016.79   | 0.14    |
| Bare Rock/Sand/Clay                   | 64.05     | 0.01    |
| Emergent Herbaceous Wetlands          | 555.32    | 0.07    |
| Acres =                               | 747455.56 |         |