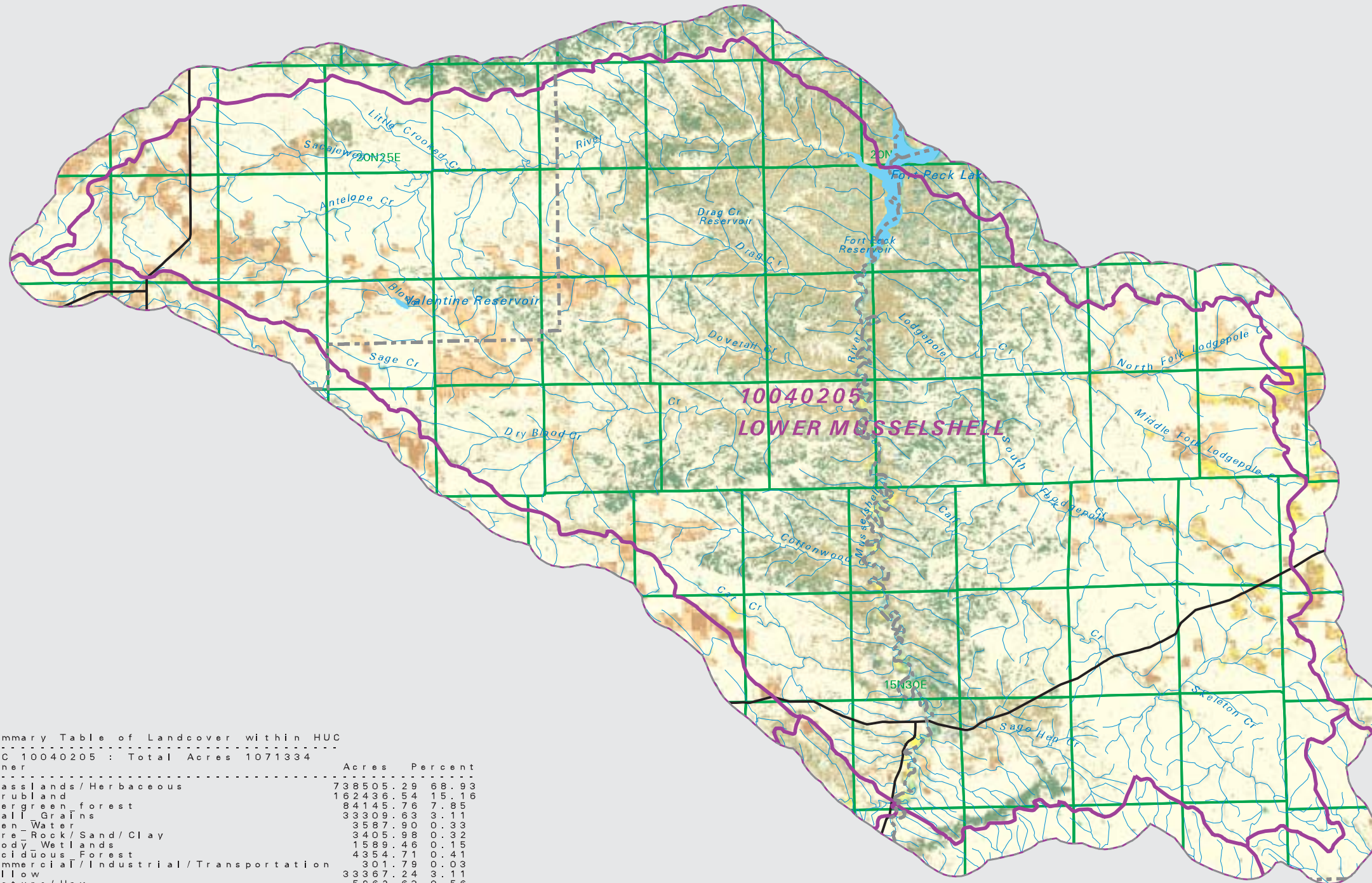


LOWER MUSSELSHELL

Watershed National Land Cover Database

- County Border
- Highway
- Public Land Survey System Townships
- Fourth Code Watersheds
- Open Water
- Low Intensity Residential
- Commercial/Industrial Transportation
- Bare Rock/Sand/Clay
- Quarries/Strip Mines Gravel Pits
- Deciduous Forest
- Evergreen Forest
- Mixed Forest
- Shrubland
- Grasslands/Herbaceous
- Pasture/Hay
- Row Crops
- Small Grains
- Fallow
- Urban/Recreational Grasses
- Woody Wetlands
- Emergent Herbaceous Wetlands



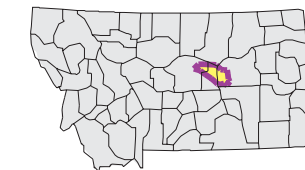
Summary Table of Landcover within HUC

HUC 10040205 : Total Acres 1071334

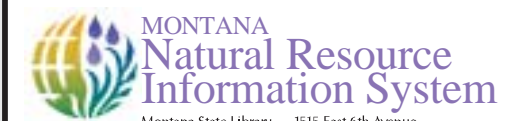
Owner	Acres	Percent
Grasslands/Herbaceous	738505.29	68.93
Shrubland	162436.54	15.16
Evergreen forest	84148.76	7.85
Small Grains	33309.63	3.11
Open Water	3587.90	0.33
Bare_Rock/Sand/Clay	3405.98	0.32
Woody_Wetlands	1589.46	0.15
Deciduous Forest	4354.71	0.41
Commercial/Industrial/Transportation	301.79	0.03
Fallow	33367.24	3.11
Pasture/Hay	5962.63	0.56
Emergent_Herbaceous_Wetlands	16.01	0.00
Row_Crops	351.36	0.03
Acres =	1071334.32	

SOURCE:
US Geological Survey NLCD files.
Data from 30-meter Landsat thematic mapper (TM), 1986-1995.
This data is intended to display land use patterns, rather than identification of the land use at any particular point.
The source data being in raster format, no attempt has been made to summarize the types or limit the legend to the displayed data.

This map is to be used as a primary reference source and is not intended for use in site - specific planning. This is public information and may be interpreted by organizations, agencies, units of government, or others, based on needs; however, they are responsible for the appropriate application. Federal, State, or local regulatory bodies are not to reassign to the Natural Resource Information System any authority for the decisions they make.



Mapscale 1: 430000, Scale in miles:



Montana State Library - 1515 East 6th Avenue
Helena, Montana - (406) 444-5357

Date created: October 31, 2003

Map Request: 04MSL0001 - 10040205 - NLCD