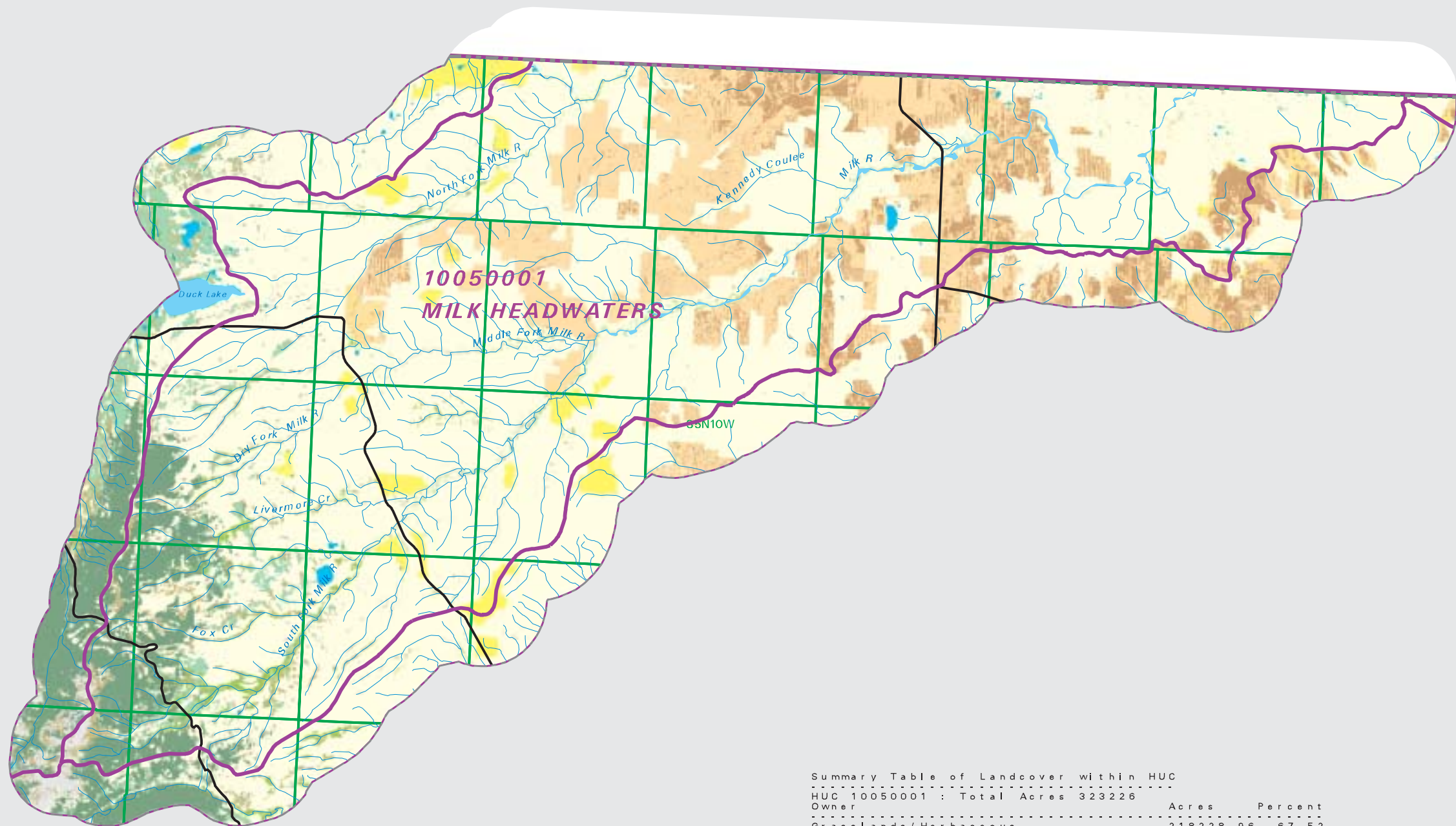


MILK HEADWATERS

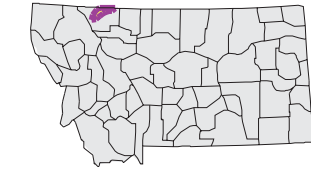
Watershed National Land Cover Database

- County Border
- Highway
- Public Land Survey System Townships
- Fourth Code Watersheds
- Open Water
- Perennial Ice/Snow
- Low Intensity Residential
- High Intensity Residential
- Commercial/Industrial Transportation
- Bare Rock/Sand/Clay
- Deciduous Forest
- Evergreen Forest
- Mixed Forest
- Shrubland
- Grasslands/Herbaceous
- Pasture/Hay
- Row Crops
- Small Grains
- Fallow
- Urban/Recreational Grasses
- Woody Wetlands
- Emergent Herbaceous Wetlands



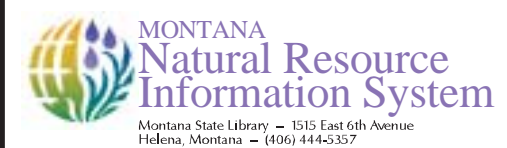
SOURCE:
US Geological Survey NLCD files.
Data from 30-meter Landsat thematic mapper (TM), 1986-1995.
This data is intended to display land use patterns, rather than identification of the land use at any particular point.
The source data being in raster format, no attempt has been made to summarize the types or limit the legend to the displayed data.

This map is to be used as a primary reference source and is not intended for use in site - specific planning. This is public information and may be interpreted by organizations, agencies, units of government, or others, based on needs; however, they are responsible for the appropriate application. Federal, State, or local regulatory bodies are not to reassign to the Natural Resource Information System any authority for the decisions they make.



Mapscale 1: 280000, Scale in miles:

Summary Table of Landcover within HUC		
HUC 10050001 : Total Acres 323226		
Owner	Acres	Percent
Grasslands/Herbaceous	218228.96	67.52
Pasture/Hay	6312.90	1.95
Small Grains	50762.29	15.70
Evergreen forest	15258.29	4.72
Open Water	957.63	0.30
Emergent Herbaceous Wetlands	1610.81	0.50
Woody Wetlands	4713.66	1.46
Fallow	14689.40	4.54
Deciduous Forest	4776.15	1.48
Mixed Forest	12.68	0.00
Bare Rock/Sand/Clay	567.77	0.18
Row Crops	8.67	0.00
Shrubland	5125.76	1.59
Commercial/Industrial/Transportation	15.79	0.00
Perennial Ice/Snow	0.44	0.00
Acres =	323226.24	



Date created: October 31, 2003
Map Request: 04MSL0001 - 10050001 - NLCD