

BIG SANDY

Watershed

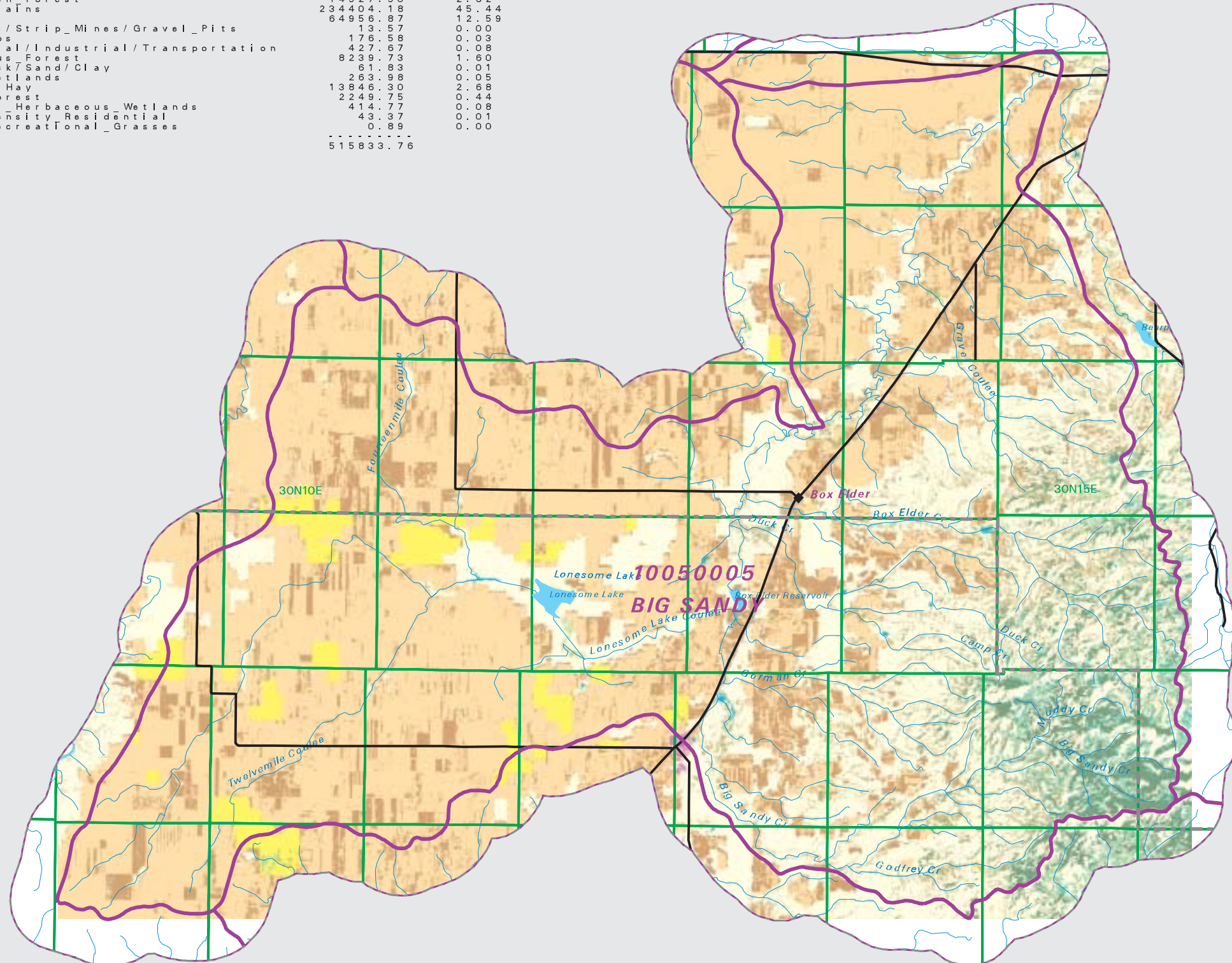
National Land Cover Database

Summary Table of Landcover within HUC

Owner	Acres	Percent
Grasslands / Herbaceous	148386.08	28.77
Shrubland	27263.61	5.29
Open Water	557.10	0.11
Evergreen forest	14527.50	2.82
Small Grains	234404.18	45.44
Fallow	64956.87	12.59
Quarries / Strip Mines / Gravel Pits	13.57	0.00
Row Crops	176.58	0.03
Commercial / Industrial / Transportation	427.67	0.08
Deciduous Forest	8239.73	1.60
Bare Rock / Sand / Clay	61.83	0.01
Woody Wetlands	263.98	0.05
Pasture / Hay	13846.30	2.68
Mixed Forest	2249.75	0.44
Emergent Herbaceous Wetlands	414.77	0.08
Low Intensity Residential	43.37	0.01
Urban / Recreational Grasses	0.89	0.00

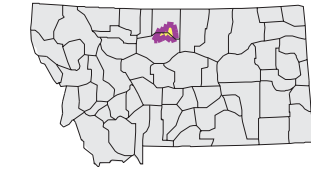
Acres = 515833.76

- County Border
- Highway
- Public Land Survey System Townships
- Fourth Code Watersheds
- Open Water
- Low Intensity Residential
- Commercial/Industrial Transportation
- Bare Rock/Sand/Clay
- Quarries/Strip Mines Gravel Pits
- Deciduous Forest
- Evergreen Forest
- Mixed Forest
- Shrubland
- Grasslands/Herbaceous
- Pasture/Hay
- Row Crops
- Small Grains
- Fallow
- Urban/Recreational Grasses
- Woody Wetlands
- Emergent Herbaceous Wetlands

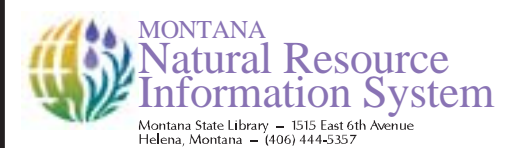


SOURCE:
 US Geological Survey NLCD files.
 Data from 30-meter Landsat thematic mapper (TM), 1986-1995.
 This data is intended to display land use patterns, rather than identification of the land use at any particular point.
 The source data being in raster format, no attempt has been made to summarize the types or limit the legend to the displayed data.

This map is to be used as a primary reference source and is not intended for use in site - specific planning. This is public information and may be interpreted by organizations, agencies, units of government, or others, based on needs; however, they are responsible for the appropriate application. Federal, State, or local regulatory bodies are not to reassign to the Natural Resource Information System any authority for the decisions they make.



Mapscale 1: 300000, Scale in miles:



Montana State Library - 1515 East 6th Avenue
 Helena, Montana - (406) 444-5357
 Date created: October 27, 2003
 Map Request: 04MSL0001 - 10050005 - NLCD