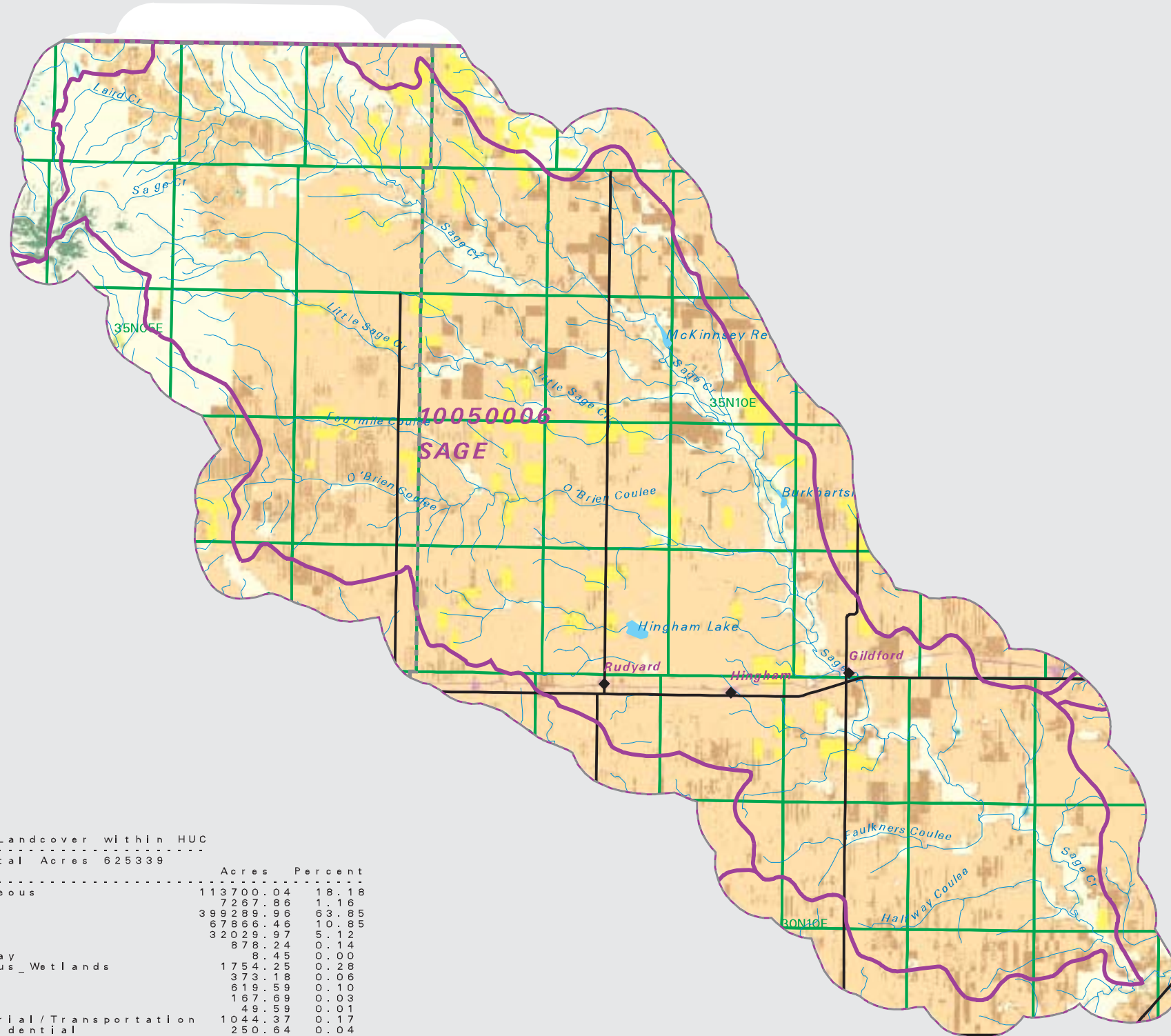


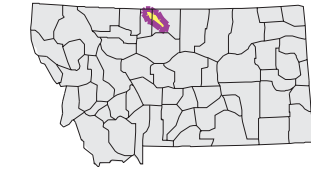
SAGE Watershed National Land Cover Database



- County Border
- Highway
- Public Land Survey System Townships
- Fourth Code Watersheds
- Open Water
- Low Intensity Residential
- Commercial/Industrial Transportation
- Bare Rock/Sand/Clay
- Quarries/Strip Mines Gravel Pits
- Deciduous Forest
- Evergreen Forest
- Shrubland
- Grasslands/Herbaceous
- Pasture/Hay
- Row Crops
- Small Grains
- Fallow
- Urban/Recreational Grasses
- Woody Wetlands
- Emergent Herbaceous Wetlands

SOURCE:
 US Geological Survey NLCD files.
 Data from 30-meter Landsat thematic mapper (TM), 1986-1995.
 This data is intended to display land use patterns, rather than identification of the land use at any particular point.
 The source data being in raster format, no attempt has been made to summarize the types or limit the legend to the displayed data.

This map is to be used as a primary reference source and is not intended for use in site - specific planning. This is public information and may be interpreted by organizations, agencies, units of government, or others, based on needs; however, they are responsible for the appropriate application. Federal, State, or local regulatory bodies are not to reassign to the Natural Resource Information System any authority for the decisions they make.

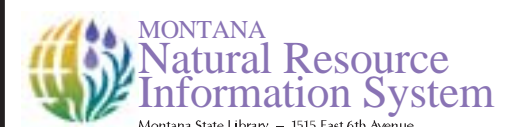


Mapscale 1: 400000, Scale in miles:

Summary Table of Landcover within HUC

HUC 10050006 : Total Acres 625339

Owner	Acres	Percent
Grasslands/Herbaceous	113700.04	18.18
Shrubland	7267.86	1.16
Small Grains	399299.96	63.85
Fallow	67866.46	10.85
Pasture/Hay	32029.97	5.12
Evergreen forest	878.24	0.14
Bare Rock/Sand/Clay	8.45	0.00
Emergent_Herbaceous_Wetlands	1754.25	0.28
Open Water	373.18	0.06
Woody Wetlands	619.59	0.10
Row Crops	167.69	0.03
Deciduous Forest	49.59	0.01
Commercial/Industrial/Transportation	1044.37	0.17
Low Intensity Residential	250.64	0.04
Quarries/Strip Mines/Gravel_Pits	10.01	0.00
Urban/Recreational_Grasses	28.69	0.00
Acres =	625338.99	



Montana State Library - 1515 East 6th Avenue
 Helena, Montana - (406) 444-5357

Date created: November 01, 2003

Map Request: 04MSL0001 - 10050006 - NLCD