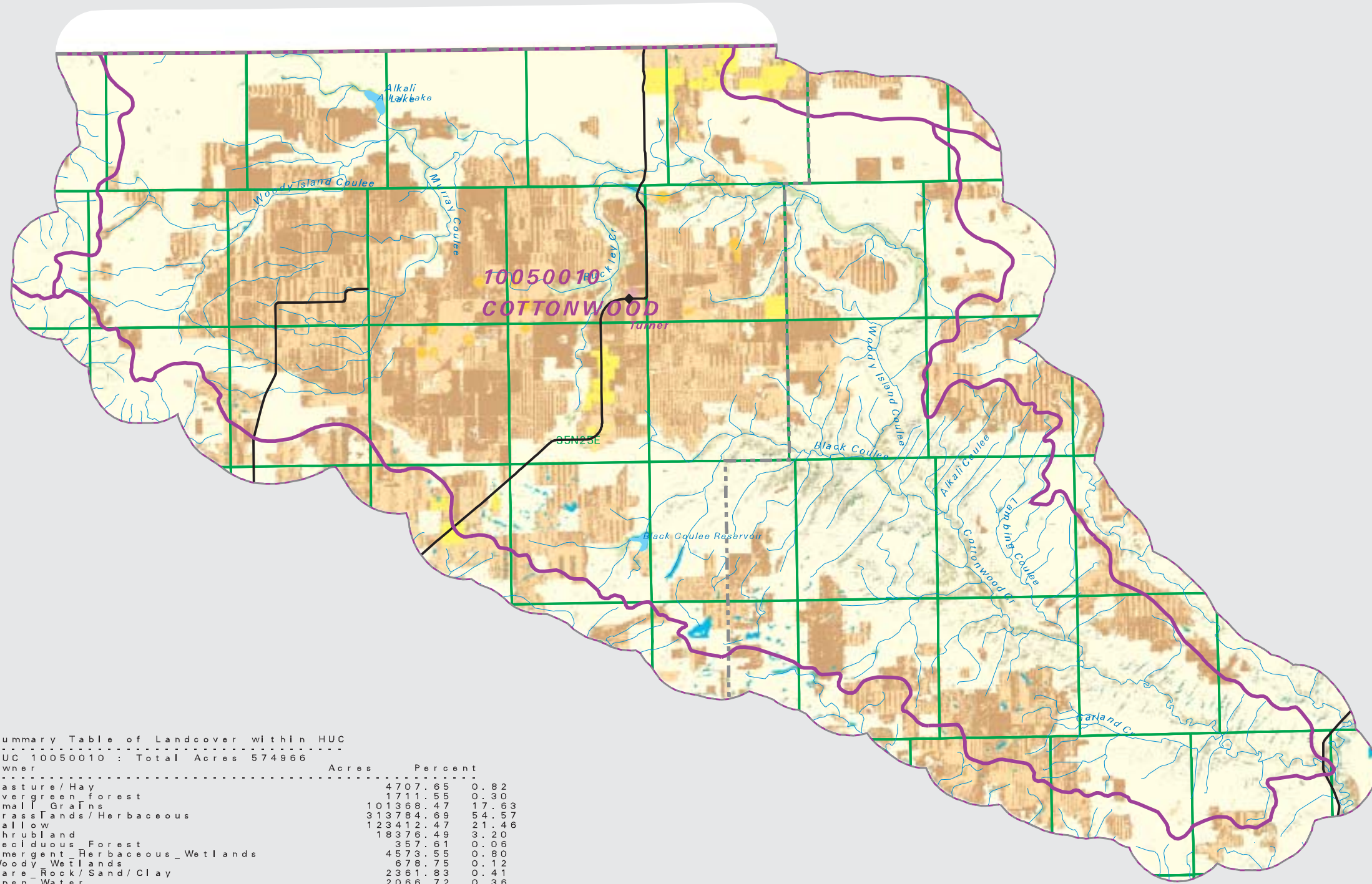


COTTONWOOD

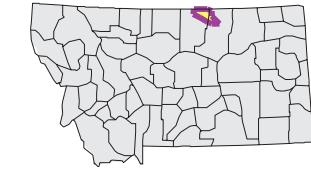
Watershed National Land Cover Database

- County Border
- Highway
- Public Land Survey System Townships
- Fourth Code Watersheds
- Open Water
- Low Intensity Residential
- Commercial/Industrial Transportation
- Bare Rock/Sand/Clay
- Quarries/Strip Mines Gravel Pits
- Deciduous Forest
- Evergreen Forest
- Shrubland
- Grasslands/Herbaceous
- Pasture/Hay
- Row Crops
- Small Grains
- Fallow
- Urban/Recreational Grasses
- Woody Wetlands
- Emergent Herbaceous Wetlands



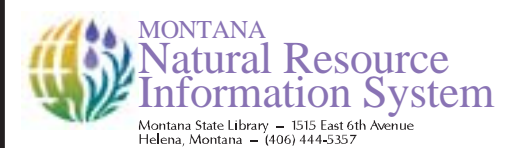
SOURCE:
US Geological Survey NLCD files.
Data from 30-meter Landsat thematic mapper (TM), 1986-1995.
This data is intended to display land use patterns, rather than identification of the land use at any particular point.
The source data being in raster format, no attempt has been made to summarize the types or limit the legend to the displayed data.

This map is to be used as a primary reference source and is not intended for use in site - specific planning. This is public information and may be interpreted by organizations, agencies, units of government, or others, based on needs; however, they are responsible for the appropriate application. Federal, State, or local regulatory bodies are not to reassign to the Natural Resource Information System any authority for the decisions they make.



Mapscale 1: 325000, Scale in miles:

Summary Table of Landcover within HUC			
HUC 10050010 : Total Acres 574966			
Owner	Acres	Percent	
Pasture/Hay	4707.65	0.82	
Evergreen forest	1711.55	0.30	
Small Grains	101368.47	17.63	
Grasslands/Herbaceous	313784.69	54.57	
Fallow	123412.47	21.46	
Shrubland	18376.49	3.20	
Deciduous Forest	357.61	0.06	
Emergent Herbaceous Wetlands	4573.55	0.80	
Woody Wetlands	678.75	0.12	
Bare Rock/Sand/Clay	2361.83	0.41	
Open Water	2066.72	0.36	
Row Crops	1464.03	0.25	
Low Intensity Residential	1471.17	0.01	
Commercial/Industrial/Transportation	26.69	0.00	
Urban/Recreational Grasses	4.00	0.00	
Acres =	574965.66		



Date created: October 31, 2003
Map Request: 04MSL0001 - 10050010 - NLCD