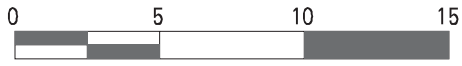
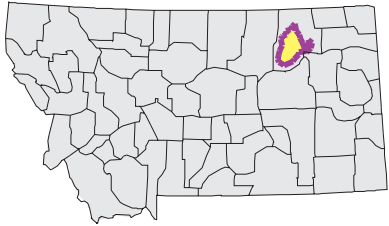
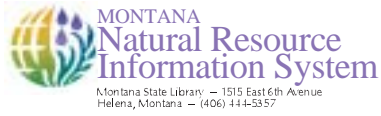


# LOWER MILK Watershed

National Land Cover Database



Mapscale 1: 420000 Scale In miles:



Date created: October 27, 2003

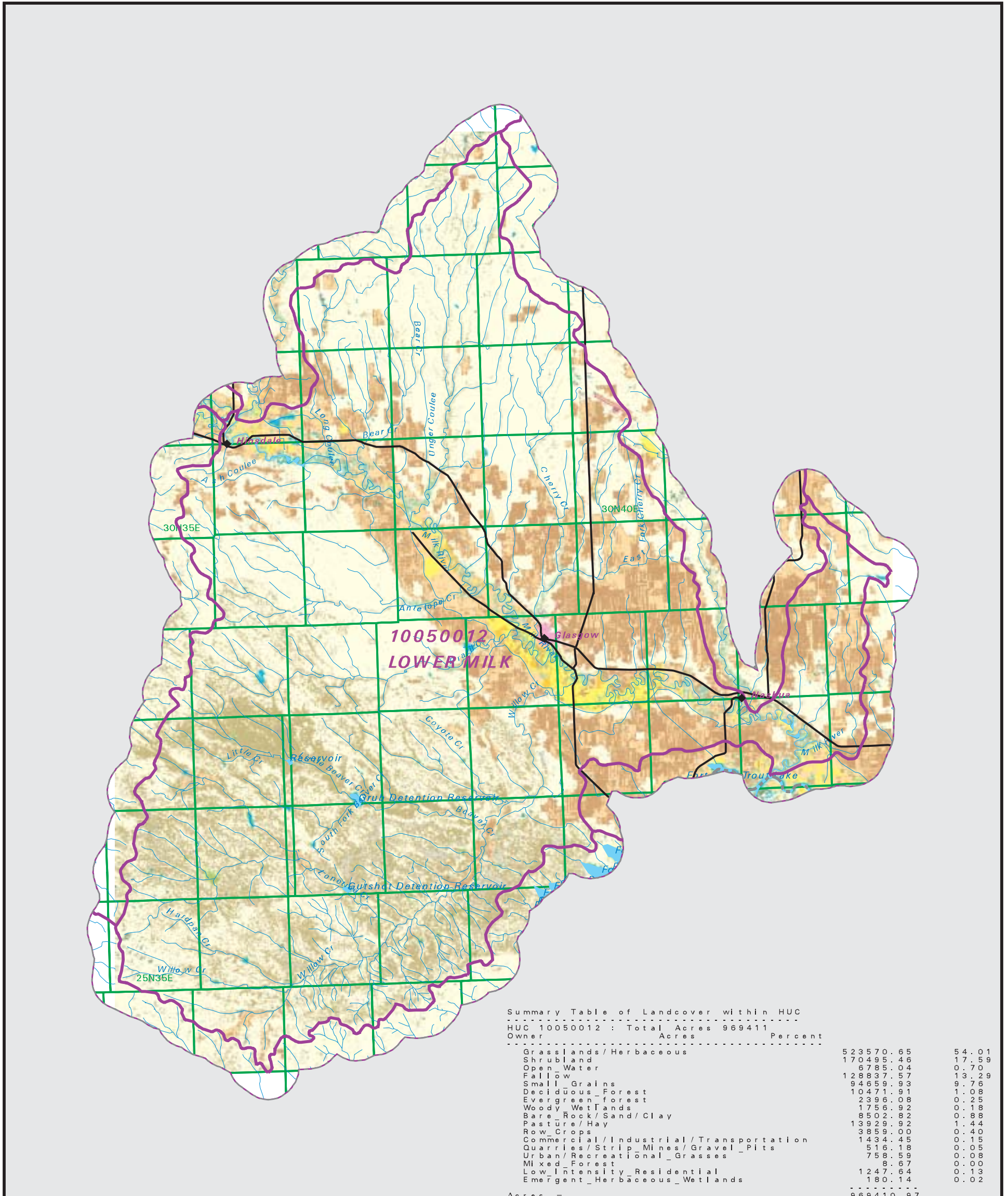
Map Request: 04MSL001 - 10050012 - NLCD

- County Border
- Highway
- Public Land Survey System Townships
- Fourth Code Watersheds
- Open Water
- Low Intensity Residential
- Commercial/Industrial Transportation
- Bare Rock/Sand/Clay
- Quarries/Strip Mines Gravel Pits
- Deciduous Forest
- Evergreen Forest
- Mixed Forest
- Shrubland
- Grasslands/Herbaceous
- Pasture/Hay
- Row Crops
- Small Grains
- Fallow
- Urban/Recreational Grasses
- Woody Wetlands
- Emergent Herbaceous Wetlands

**SOURCE:**

US Geological Survey NLCD files.  
 Data from 30-meter Landsat thematic mapper (TM), 1986-1995.  
 This data is intended to display land use patterns, rather than identification of the land use at any particular point.  
 The source data being in raster format, no attempt has been made to summarize the types or limit the legend to the displayed data.

This map is to be used as a primary reference source and is not intended for use in site - specific planning. This is public information and may be interpreted by organizations, agencies, units of government, or others, based on needs; however, they are responsible for the appropriate application. Federal, State, or local regulatory bodies are not to reassign to the Natural Resource Information System any authority for the decisions they make.



Summary Table of Landcover within HUC

HUC 10050012 : Total Acres 969411

Owner	Acres	Percent
Grasslands / Herbaceous	523570.65	54.01
Shrubland	170495.46	17.59
Open Water	6785.04	0.70
Fallow	12837.57	1.329
Small Grains	94859.93	9.78
Deciduous Forest	10471.91	1.08
Evergreen Forest	2396.08	0.25
Woody Wetlands	1756.92	0.18
Bare Rock / Sand / Clay	8502.82	0.88
Pasture / Hay	13929.92	1.44
Row Crops	3859.00	0.40
Commercial / Industrial / Transportation	1434.45	0.15
Quarries / Strip Mines / Gravel Pits	516.18	0.05
Urban / Recreational Grasses	758.59	0.08
Mixed Forest	6.67	0.00
Low Intensity Residential	1247.64	0.13
Emergent Herbaceous Wetlands	180.14	0.02
Acres =	969410.97	