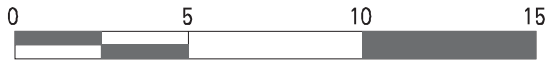
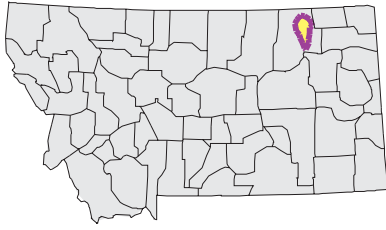
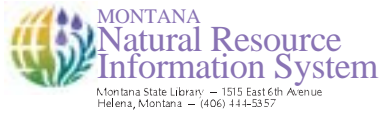


# PORCUPINE Watershed

National Land Cover Database



Mapscale 1: 350000 Scale In miles:



Date created: November 01, 2003

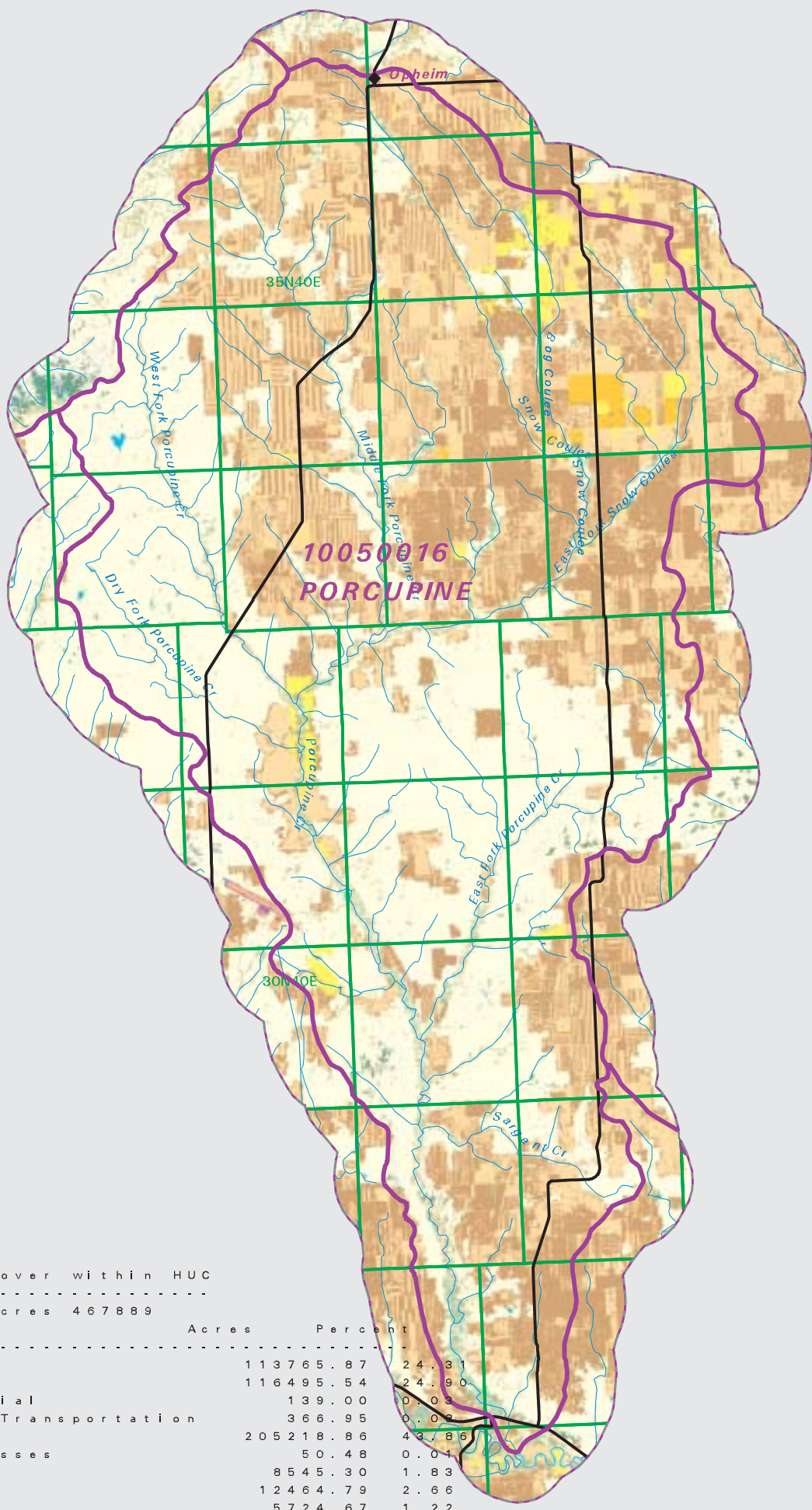
Map Request: 04MSL001 - 10050016 - NLCD

- County Border
- Highway
- Public Land Survey System Townships
- Fourth Code Watersheds
- Open Water
- Low Intensity Residential
- Commercial/Industrial Transportation
- Bare Rock/Sand/Clay
- Quarries/Strip Mines Gravel Pits
- Deciduous Forest
- Evergreen Forest
- Shrubland
- Grasslands/Herbaceous
- Pasture/Hay
- Row Crops
- Small Grains
- Fallow
- Urban/Recreational Grasses
- Woody Wetlands
- Emergent Herbaceous Wetlands

**SOURCE:**

US Geological Survey NLCD files.  
 Data from 30-meter Landsat thematic mapper (TM), 1986-1995.  
 This data is intended to display land use patterns, rather than identification of the land use at any particular point.  
 The source data being in raster format, no attempt has been made to summarize the types or limit the legend to the displayed data.

This map is to be used as a primary reference source and is not intended for use in site-specific planning. This is public information and may be interpreted by organizations, agencies, units of government, or others, based on needs; however, they are responsible for the appropriate application. Federal, State, or local regulatory bodies are not to reassign to the Natural Resource Information System any authority for the decisions they make.



Summary Table of Landcover within HUC  
 -----  
 HUC 10050016 : Total Acres 467889

Owner	Acres	Percent
Small_Grains	113765.87	24.31
Fallow	116495.54	24.90
Low_Intensity_Residential	139.00	0.03
Commercial/Industrial/Transportation	366.95	0.08
Grasslands/Herbaceous	205218.86	43.86
Urban/Recreational_Grasses	50.48	0.01
Pasture/Hay	8545.30	1.83
Shrubland	12464.79	2.66
Deciduous_Forest	5724.67	1.22
Open_Water	709.66	0.15
Row_Crops	2863.33	0.61
Evergreen_forest	903.37	0.19
Woody_Wetlands	94.74	0.02
Quarries/Strip_Mines/Gravel_Pits	51.37	0.01
Bare_Rock/Sand/Clay	494.83	0.11
-----	467889.70	100.00