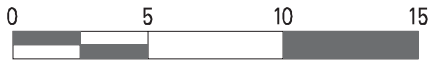
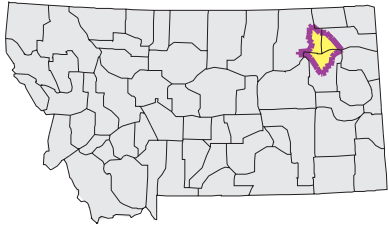
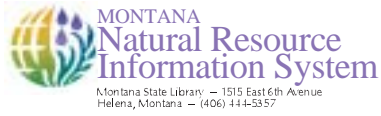


# PRAIRIE ELK-WOLF Watershed

## National Land Cover Database



Mapscale 1: 450000 Scale in miles:



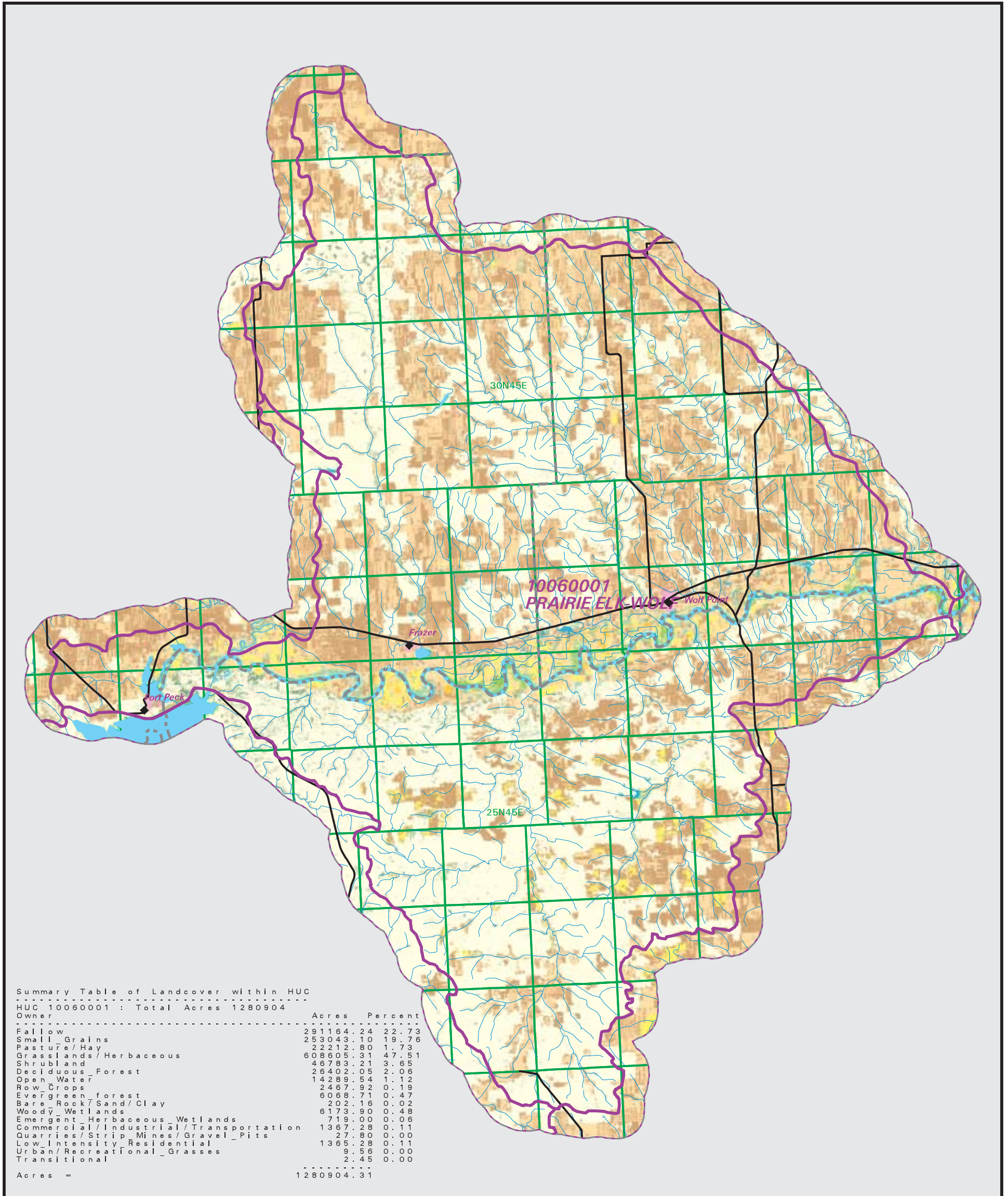
Date created: October 31, 2003

Map Request: 04MSL0001 - 10060001 - NLCD

- County Border
- Highway
- Public Land Survey System Townships
- Fourth Code Watersheds
- Open Water
- Low Intensity Residential
- Commercial/Industrial Transportation
- Bare Rock/Sand/Clay
- Quarries/Strip Mines Gravel Pits
- Transitional
- Deciduous Forest
- Evergreen Forest
- Mixed Forest
- Shrubland
- Grasslands/Herbaceous
- Pasture/Hay
- Row Crops
- Small Grains
- Fallow
- Urban/Recreational Grasses
- Woody Wetlands
- Emergent Herbaceous Wetlands

SOURCE:  
US Geological Survey NLCD files.  
Data from 30-meter Landsat thematic mapper (TM), 1986-1995.  
This data is intended to display land use patterns, rather than identification of the land use at any particular point.  
The source data being in raster format, no attempt has been made to summarize the types or limit the legend to the displayed data.

This map is to be used as a primary reference source and is not intended for use in site-specific planning. This is public information and may be interpreted by organizations, agencies, units of government, or others, based on needs; however, they are responsible for the appropriate application. Federal, State, or local regulatory bodies are not to reassign to the Natural Resource Information System any authority for the decisions they make.



Summary Table of Landcover within HUC

HUC 10060001 : Total Acres 1280904

Owner	Acres	Percent
Fallow	291164.24	22.73
Small Grains	253043.10	19.76
Pasture/Hay	22212.80	1.73
Grasslands/Herbaceous	608605.31	47.51
Shrubland	46783.21	3.65
Deciduous Forest	26402.05	2.06
Open Water	14289.54	1.12
Row Crops	2467.92	0.19
Evergreen forest	6068.71	0.47
Bare Rock/Sand/Clay	202.16	0.02
Woody Wetlands	6173.90	0.48
Emergent Herbaceous Wetlands	1367.28	0.11
Commercial/Industrial/Transportation	27.80	0.00
Quarries/Strip Mines/Gravel Pits	1365.28	0.11
Low Intensity Residential	9.56	0.00
Urban/Recreational Grasses	2.45	0.00
Transitional		
Acres =	1280904.31	