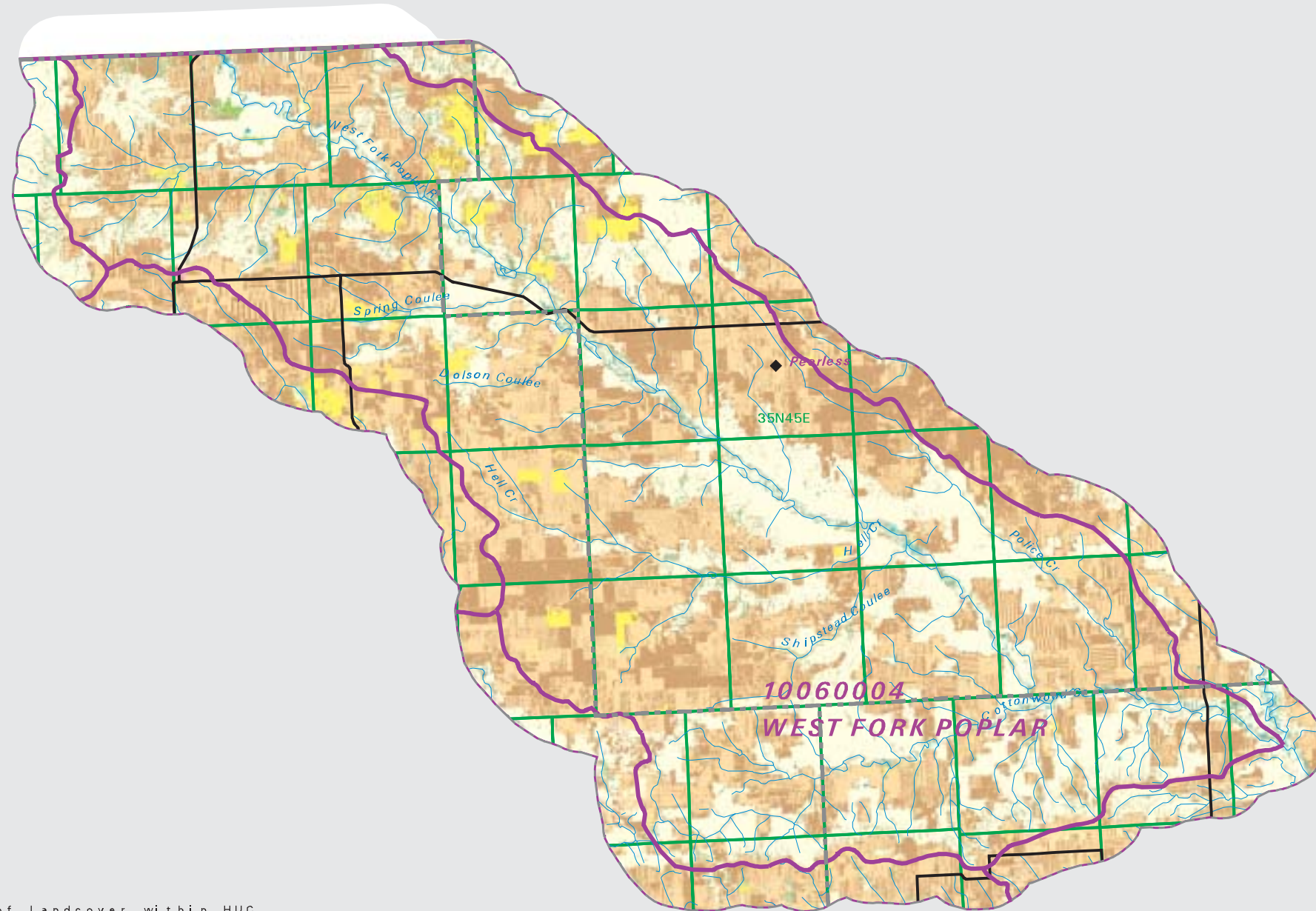


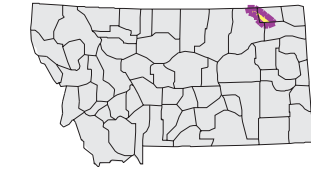
WEST FORK POPLAR Watershed National Land Cover Database

- County Border
- Highway
- Public Land Survey System Townships
- Fourth Code Watersheds
- Open Water
- Low Intensity Residential
- Commercial/Industrial Transportation
- Bare Rock/Sand/Clay
- Quarries/Strip Mines Gravel Pits
- Deciduous Forest
- Evergreen Forest
- Shrubland
- Grasslands/Herbaceous
- Pasture/Hay
- Row Crops
- Small Grains
- Fallow
- Urban/Recreational Grasses
- Woody Wetlands
- Emergent Herbaceous Wetlands



SOURCE:
US Geological Survey NLCD files.
Data from 30-meter Landsat thematic mapper (TM), 1986-1995.
This data is intended to display land use patterns, rather than identification of the land use at any particular point.
The source data being in raster format, no attempt has been made to summarize the types or limit the legend to the displayed data.

This map is to be used as a primary reference source and is not intended for use in site - specific planning. This is public information and may be interpreted by organizations, agencies, units of government, or others, based on needs; however, they are responsible for the appropriate application. Federal, State, or local regulatory bodies are not to reassign to the Natural Resource Information System any authority for the decisions they make.

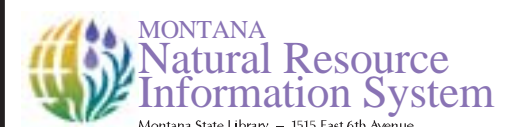


Mapscale 1: 400000, Scale in miles:

Summary Table of Landcover within HUC

HUC 10060004 : Total Acres 547500

Owner	Acres	Percent
Grasslands/Herbaceous	176416.06	32.22
Shrubland	24194.11	4.42
Fallow	159526.95	29.14
Deciduous Forest	8386.29	1.53
Small Grains	160844.86	29.38
Open Water	2287.55	0.42
Evergreen forest	675.41	0.12
Commercial/Industrial/Transportation	116.76	0.02
Pasture/Hay	14540.18	2.66
Row Crops	51.82	0.01
Bare Rock/Sand/Clay	3.34	0.00
Woody Wetlands	296.90	0.05
Emergent Herbaceous Wetlands	118.98	0.02
Quarries/Strip Mines/Gravel Pits	6.23	0.00
Low Intensity Residential	32.25	0.01
Urban/Recreational Grasses	2.22	0.00
Acres =	547499.89	



Montana State Library - 1515 East 6th Avenue
Helena, Montana - (406) 444-5357

Date created: November 01, 2003
Map Request: 04MSL0001 - 10060004 - NLCD