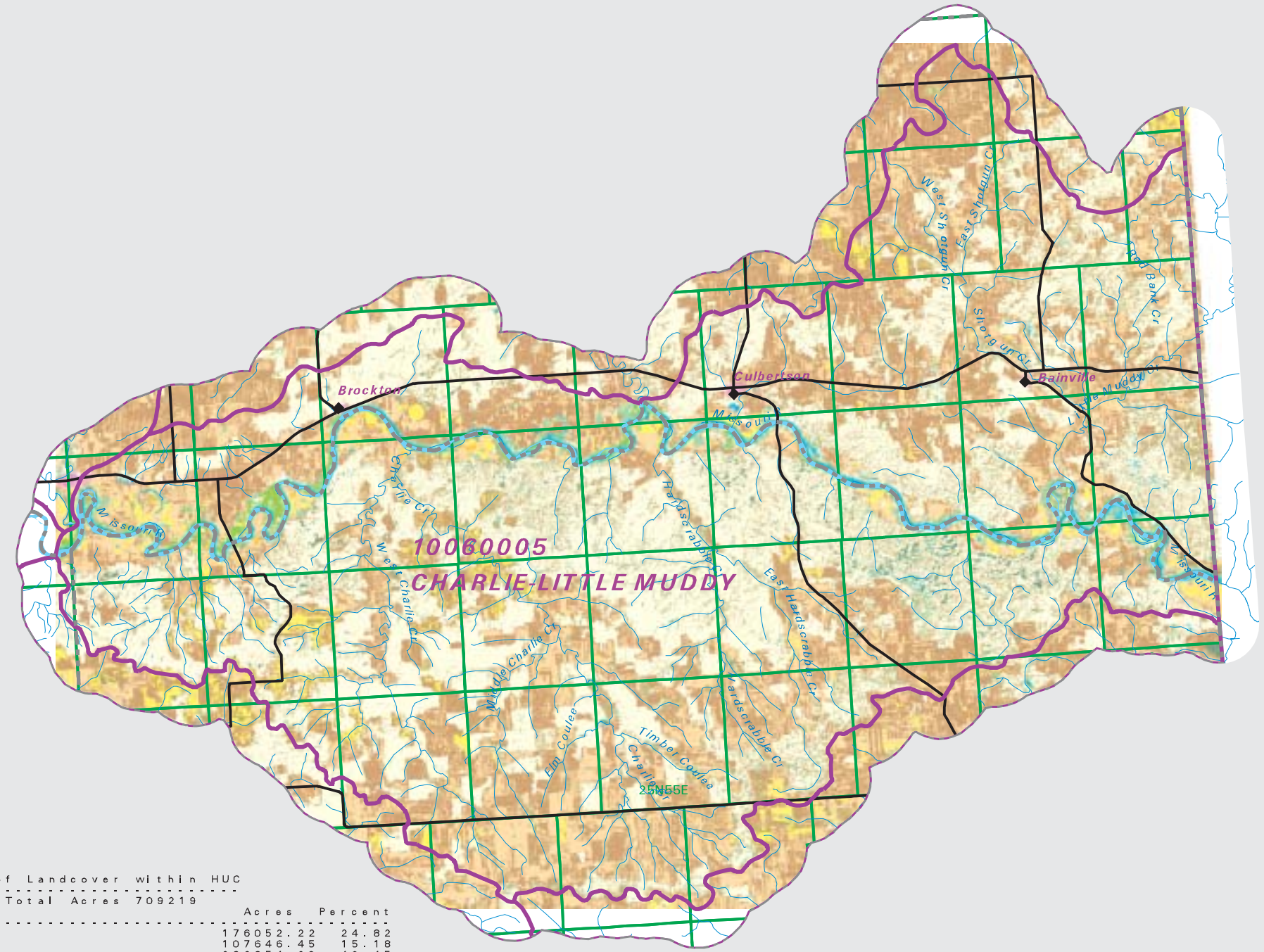


CHARLIE-LITTLE MUDDY

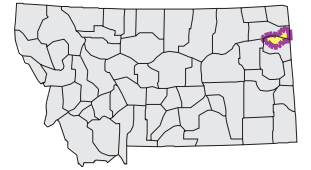
Watershed National Land Cover Database

- County Border
- Highway
- Public Land Survey System Townships
- Fourth Code Watersheds
- Open Water
- Low Intensity Residential
- Commercial/Industrial Transportation
- Bare Rock/Sand/Clay
- Quarries/Strip Mines Gravel Pits
- Transitional
- Deciduous Forest
- Evergreen Forest
- Mixed Forest
- Shrubland
- Grasslands/Herbaceous
- Pasture/Hay
- Row Crops
- Small Grains
- Fallow
- Urban/Recreational Grasses
- Woody Wetlands
- Emergent Herbaceous Wetlands



SOURCE:
US Geological Survey NLCD files.
Data from 30-meter Landsat thematic mapper (TM), 1986-1995.
This data is intended to display land use patterns, rather than identification of the land use at any particular point.
The source data being in raster format, no attempt has been made to summarize the types or limit the legend to the displayed data.

This map is to be used as a primary reference source and is not intended for use in site - specific planning. This is public information and may be interpreted by organizations, agencies, units of government, or others, based on needs; however, they are responsible for the appropriate application. Federal, State, or local regulatory bodies are not to reassign to the Natural Resource Information System any authority for the decisions they make.



Mapscale 1: 400000, Scale in miles:



Montana State Library - 1515 East 6th Avenue
Helena, Montana - (406) 444-5357
Date created: October 27, 2003
Map Request: 04MSL0001 - 10060005 - NLCD

Summary Table of Landcover within HUC

HUC: 100600005 : Total Acres 709219

Owner	Acres	Percent
Fallow	176052.22	24.82
Small Grains	107646.45	15.18
Grasslands/Herbaceous	286854.23	40.45
Shrubland	81512.61	11.49
Pasture/Hay	15655.04	2.21
Deciduous Forest	13963.06	1.97
Woody Wetlands	6866.22	0.97
Emergent Herbaceous Wetlands	190.15	0.03
Row Crops	829.09	0.12
Open Water	11431.36	1.62
Evergreen forest	5990.21	0.84
Bare Rock/Sand/Clay	579.56	0.08
Commercial/Industrial/Transportation	992.99	0.14
Low Intensity Residential	594.91	0.08
Urban/Recreational Grasses	2.00	0.00
Quarries/Strip Mines/Gravel Pits	9.34	0.00
Acres =	709219.43	