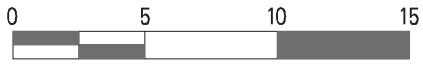
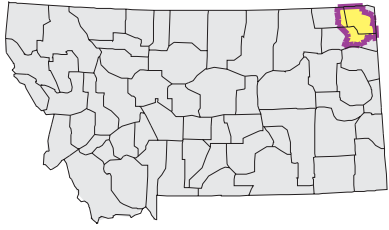
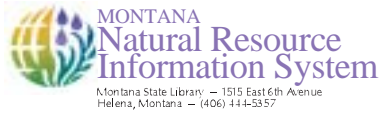


BIG MUDDY Watershed

National Land Cover Database



Mapscale 1: 460000 Scale in miles:



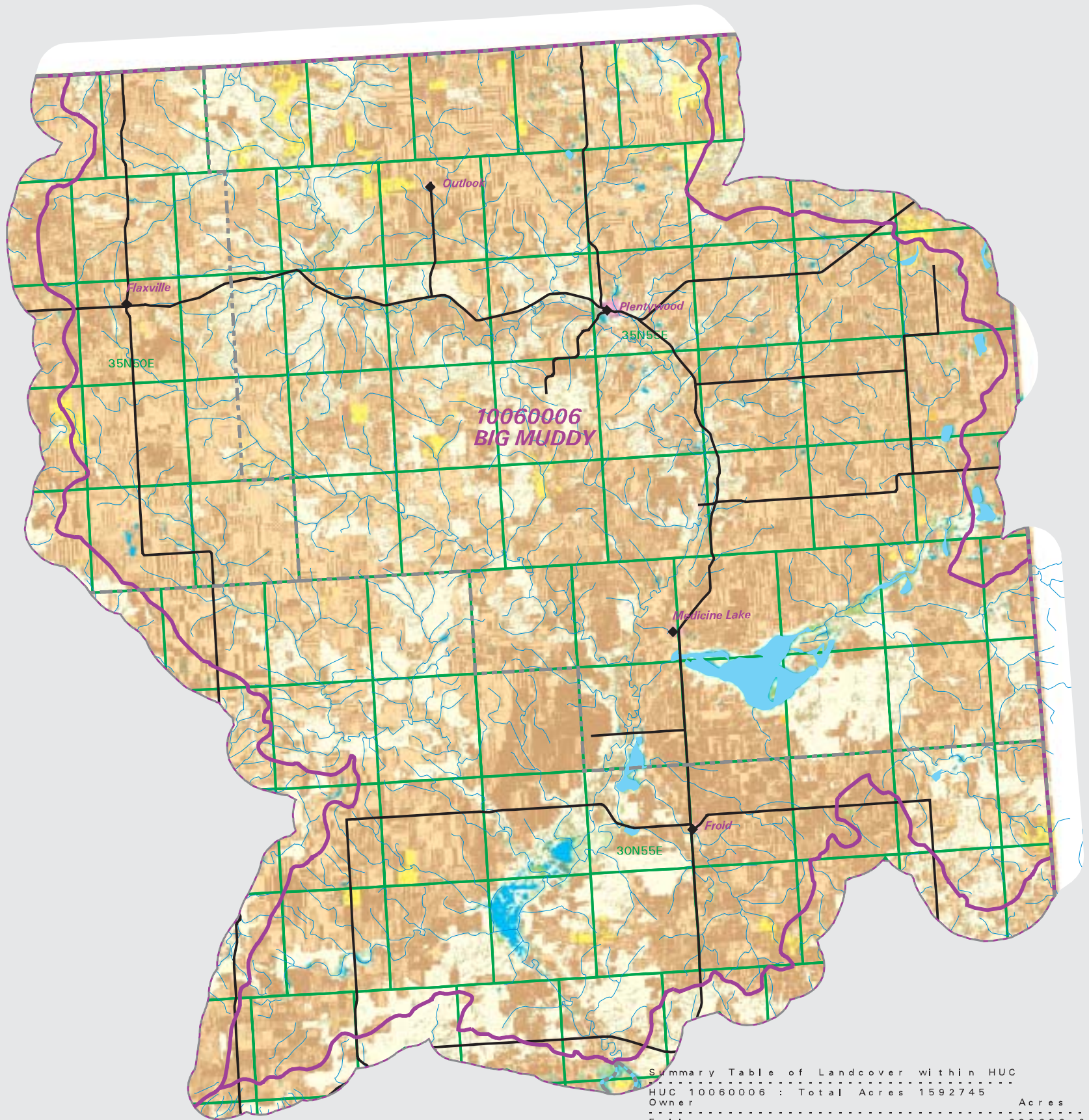
Date created: November 01, 2003

Map Request: 04MSL0001 - 10060006 - NLCD

- County Border
- Highway
- Public Land Survey System Townships
- Fourth Code Watersheds
- Open Water
- Low Intensity Residential
- Commercial/Industrial Transportation
- Bare Rock/Sand/Clay
- Quarries/Strip Mines Gravel Pits
- Transitional
- Deciduous Forest
- Evergreen Forest
- Shrubland
- Grasslands/Herbaceous
- Pasture/Hay
- Row Crops
- Small Grains
- Fallow
- Urban/Recreational Grasses
- Woody Wetlands
- Emergent Herbaceous Wetlands

SOURCE:
US Geological Survey NLCD files.
Data from 30-meter Landsat thematic mapper (TM), 1986-1995.
This data is intended to display land use patterns, rather than identification of the land use at any particular point.
The source data being in raster format, no attempt has been made to summarize the types or limit the legend to the displayed data.

This map is to be used as a primary reference source and is not intended for use in site - specific planning. This is public information and may be interpreted by organizations, agencies, units of government, or others, based on needs; however, they are responsible for the appropriate application. Federal, State, or local regulatory bodies are not to reassign to the Natural Resource Information System any authority for the decisions they make.



Summary Table of Landcover within HUC		
HUC 10060006 : Total Acres 1592745		
Owner	Acres	Percent
Fallow	600686.29	37.71
Small Grains	467170.65	29.33
Woody Wetlands	4055.59	0.25
Grasslands/Herbaceous	343917.86	21.59
Shrubland	120096.56	7.54
Row Crops	468.59	0.03
Evergreen forest	2118.09	0.13
Deciduous Forest	5277.21	0.33
Pasture/Hay	22888.21	1.44
Open Water	20721.42	1.30
Bare Rock/Sand/Clay	31.58	0.00
Low Intensity Residential	942.57	0.06
Commercial/Industrial Transportation	593.57	0.04
Urban/Recreational Grasses	15.57	0.00
Emergent Herbaceous Wetlands	3750.02	0.24
Transitional	4.67	0.00
Quarries/Strip Mines/Gravel Pits	6.45	0.00
Acres =	1592745.28	