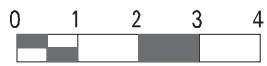
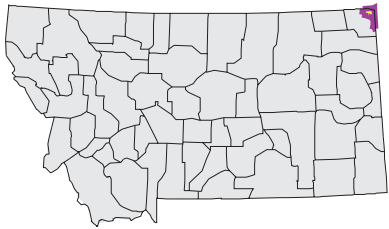
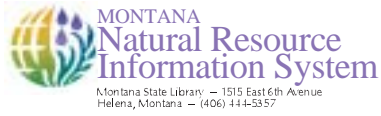


BRUSH LAKE Watershed

National Land Cover Database



Mapscale 1: 200000 Scale In miles:



Date created: October 31, 2003

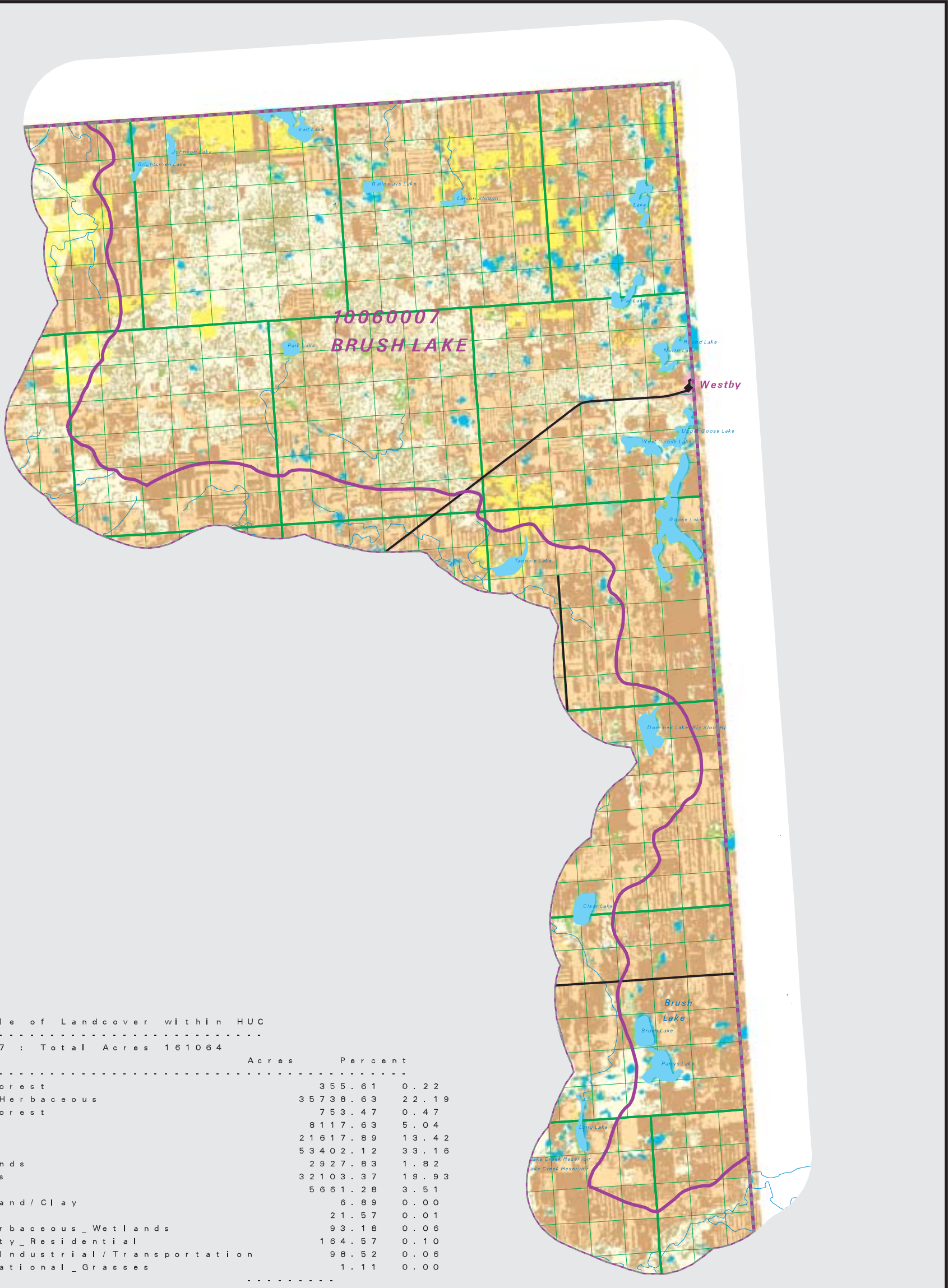
Map Request: 04MSL0001 - 10060007 - NLCD

- County Border
- Highway
- Public Land Survey System Townships
- Fourth Code Watersheds
- Open Water
- Low Intensity Residential
- Commercial/Industrial Transportation
- Bare Rock/Sand/Clay
- Deciduous Forest
- Evergreen Forest
- Shrubland
- Grasslands/Herbaceous
- Pasture/Hay
- Row Crops
- Small Grains
- Fallow
- Urban/Recreational Grasses
- Woody Wetlands
- Emergent Herbaceous Wetlands

SOURCE:

US Geological Survey NLCD files.
Data from 30-meter Landsat thematic mapper (TM), 1986-1995. This data is intended to display land use patterns, rather than identification of the land use at any particular point. The source data being in raster format, no attempt has been made to summarize the types or limit the legend to the displayed data.

This map is to be used as a primary reference source and is not intended for use in site - specific planning. This is public information and may be interpreted by organizations, agencies, units of government, or others, based on needs; however, they are responsible for the appropriate application. Federal, State, or local regulatory bodies are not to reassign to the Natural Resource Information System any authority for the decisions they make.



Summary Table of Landcover within HUC

HUC 10060007 : Total Acres 161064

Owner	Acres	Percent
Evergreen_forest	355.61	0.22
Grasslands / Herbaceous	35738.63	22.19
Deciduous_Forest	753.47	0.47
Pasture / Hay	8117.63	5.04
Shrubland	21617.89	13.42
Fallow	53402.12	33.16
Woody_Wetlands	2927.83	1.82
Small_Grains	32103.37	19.93
Open_Water	5661.28	3.51
Bare_Rock / Sand / Clay	6.89	0.00
Row_Crops	21.57	0.01
Emergent_Herbaceous_Wetlands	93.18	0.06
Low_Intensity_Residential	164.57	0.10
Commercial/Industrial/Transportation	98.52	0.06
Urban/Recreational_Grasses	1.11	0.00