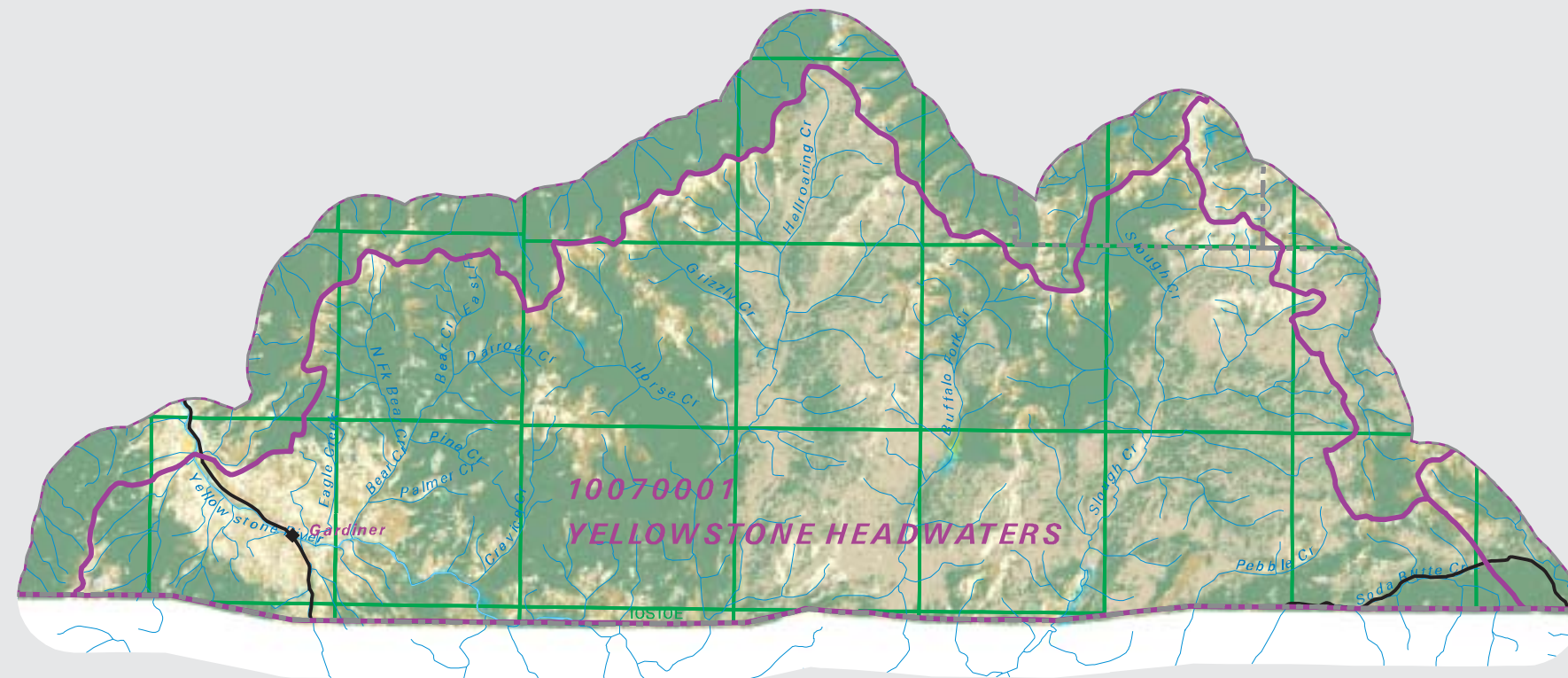


YELLOWSTONE HEADWATERS

Watershed

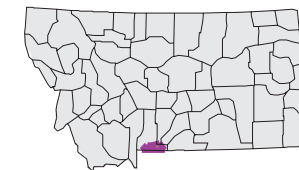
National Land Cover Database

- County Border
- Highway
- Public Land Survey System Townships
- Fourth Code Watersheds
- Open Water
- Perennial Ice/Snow
- Low Intensity Residential
- High Intensity Residential
- Commercial/Industrial Transportation
- Bare Rock/Sand/Clay
- Transitional
- Deciduous Forest
- Evergreen Forest
- Mixed Forest
- Shrubland
- Grasslands/Herbaceous
- Pasture/Hay
- Row Crops
- Small Grains
- Urban/Recreational Grasses
- Woody Wetlands
- Emergent Herbaceous Wetlands



SOURCE:
 US Geological Survey NLCD files.
 Data from 30-meter Landsat thematic mapper (TM), 1986-1995.
 This data is intended to display land use patterns, rather than identification of the land use at any particular point.
 The source data being in raster format, no attempt has been made to summarize the types or limit the legend to the displayed data.

This map is to be used as a primary reference source and is not intended for use in site - specific planning. This is public information and may be interpreted by organizations, agencies, units of government, or others, based on needs; however, they are responsible for the appropriate application. Federal, State, or local regulatory bodies are not to reassign to the Natural Resource Information System any authority for the decisions they make.

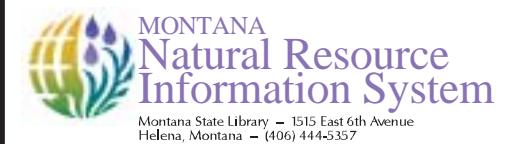


Mapscale 1: 350000, Scale in miles:

Summary Table of Landcover within HUC

HUC 10070001 : Total Acres 306213

Owner	Acres	Percent
Grasslands/Herbaceous	28789.90	9.40
Evergreen_forest	155529.84	50.79
Shrubland	37298.29	12.18
Bare_Rock/Sand/Clay	1249.41	0.41
Transitional	79302.67	25.90
Perennial_Ice/Snow	149.45	0.05
Mixed_Forest	455.02	0.15
Deciduous_Forest	1831.42	0.60
Open_Water	808.85	0.26
Low_Intensity_Residential	51.15	0.02
Emergent_Herbaceous_Wetlands	152.12	0.05
Woody_Wetlands	301.12	0.10
Commercial/Industrial/Transportation	136.77	0.04
Urban/Recreational_Grasses	94.07	0.03
Pasture/Hay	39.14	0.01
High_Intensity_Residential	23.57	0.01
Acres =	306212.81	



Montana State Library - 1515 East 6th Avenue
 Helena, Montana - (406) 444-5357
 Date created: October 29, 2003
 Map Request: 04MSL0001 - 10070001 - NLCD