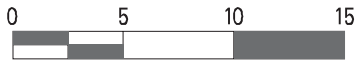
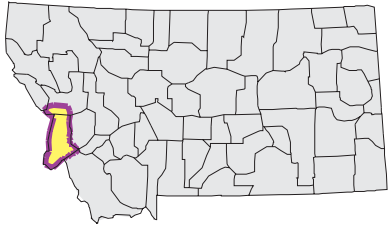
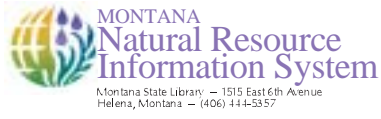


# BITTERROOT Watershed

## National Land Cover Database



Mapscale 1: 550000 Scale in miles:



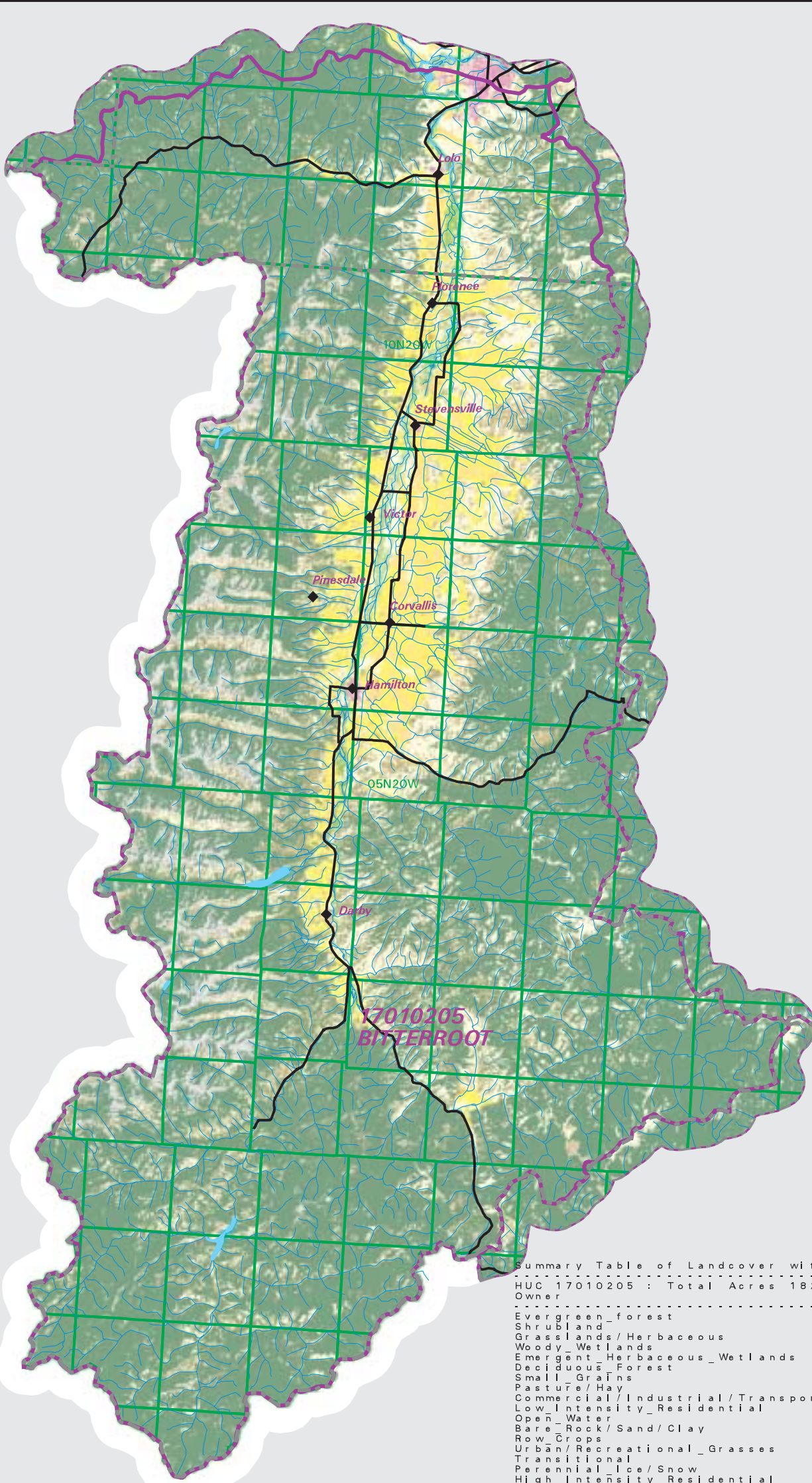
Date created: October 30, 2003

Map Request: 04MSL0001 - 17010205 - NLCD

- County Border
- Highway
- Public Land Survey System Townships
- Fourth Code Watersheds
- Open Water
- Perennial Ice/Snow
- Low Intensity Residential
- High Intensity Residential
- Commercial/Industrial Transportation
- Bare Rock/Sand/Clay
- Transitional
- Deciduous Forest
- Evergreen Forest
- Mixed Forest
- Shrubland
- Grasslands/Herbaceous
- Pasture/Hay
- Row Crops
- Small Grains
- Fallow
- Urban/Recreational Grasses
- Woody Wetlands
- Emergent Herbaceous Wetlands

SOURCE:  
US Geological Survey NLCD files.  
Data from 30-meter Landsat thematic mapper (TM), 1986-1995.  
This data is intended to display land use patterns, rather than identification of the land use at any particular point.  
The source data being in raster format, no attempt has been made to summarize the types or limit the legend to the displayed data.

This map is to be used as a primary reference source and is not intended for use in site - specific planning. This is public information and may be interpreted by organizations, agencies, units of government, or others, based on needs; however, they are responsible for the appropriate application. Federal, State, or local regulatory bodies are not to reassign to the Natural Resource Information System any authority for the decisions they make.



Summary Table of Landcover within HUC

HUC 17010205 : Total Acres 1828807

Owner	Acres	Percent
Evergreen_forest	1121892.89	61.35
Shrubland	202840.57	11.09
Grasslands/Herbaceous	255798.79	13.99
Woody_Wetlands	9804.28	0.54
Emergent_Herbaceous_Wetlands	4491.93	0.25
Deciduous_Forest	4088.73	0.22
Small_Grains	28621.55	1.57
Pasture/Hay	101381.59	5.54
Commercial/Industrial/Transportation	3164.68	0.17
Low_Intensity_Residential	1904.14	0.10
Open_Water	6379.40	0.35
Bare_Rock/Sand/Clay	70298.57	3.84
Row_Crops	925.16	0.05
Urban/Recreational_Grasses	427.89	0.02
Transitional	10521.72	0.58
Perennial_Ice/Snow	160.12	0.01
High_Intensity_Residential	208.16	0.01
Mixed_Forest	1316.36	0.07
Fallow	4580.00	0.25
Acres =	1828806.53	