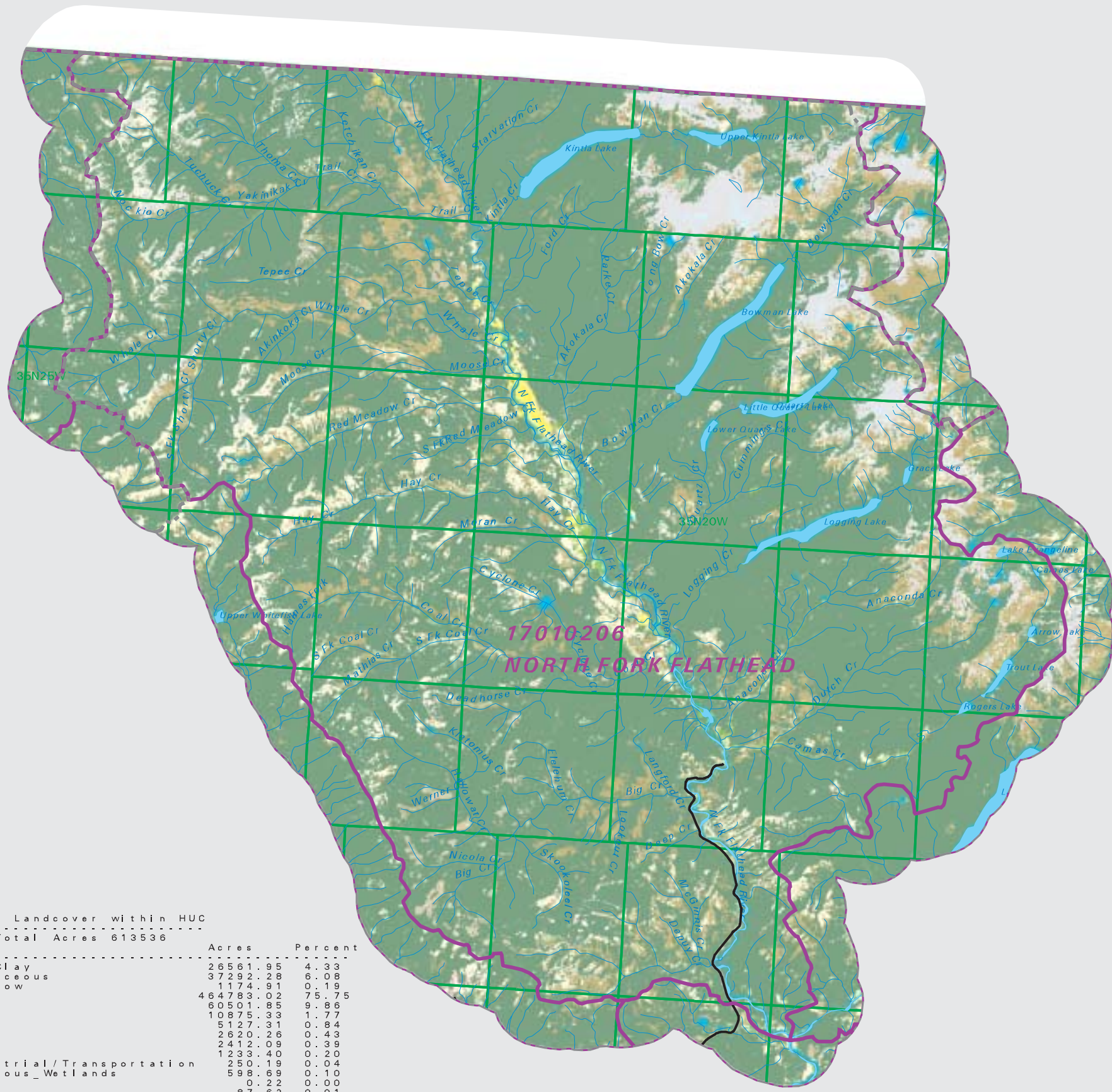


# NORTH FORK FLATHEAD

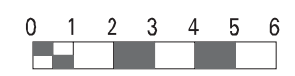
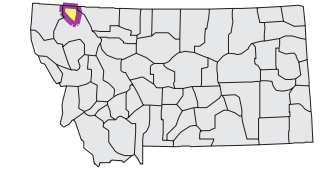
## Watershed National Land Cover Database



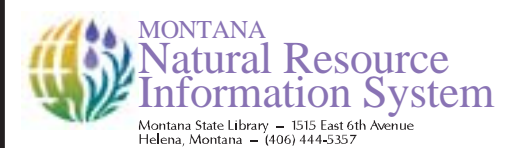
- County Border
- Highway
- Public Land Survey System Townships
- Fourth Code Watersheds
- Open Water
- Perennial Ice/Snow
- Low Intensity Residential
- Commercial/Industrial Transportation
- Bare Rock/Sand/Clay
- Transitional
- Deciduous Forest
- Evergreen Forest
- Mixed Forest
- Shrubland
- Grasslands/Herbaceous
- Pasture/Hay
- Small Grains
- Fallow
- Urban/Recreational Grasses
- Woody Wetlands
- Emergent Herbaceous Wetlands

SOURCE:  
US Geological Survey NLCD files.  
Data from 30-meter Landsat thematic mapper (TM), 1986-1995.  
This data is intended to display land use patterns, rather than identification of the land use at any particular point.  
The source data being in raster format, no attempt has been made to summarize the types or limit the legend to the displayed data.

This map is to be used as a primary reference source and is not intended for use in site - specific planning. This is public information and may be interpreted by organizations, agencies, units of government, or others, based on needs; however, they are responsible for the appropriate application. Federal, State, or local regulatory bodies are not to reassign to the Natural Resource Information System any authority for the decisions they make.



Mapscale 1: 300000, Scale in miles:



Montana State Library - 1515 East 6th Avenue  
Helena, Montana - (406) 444-5357  
Date created: October 29, 2003  
Map Request: 04MSL0001 - 17010206 - NLCD

Summary Table of Landcover within HUC

Landcover Type	Acres	Percent
HUC 17010206 : Total Acres	613536	
Bare Rock/Sand/Clay	26561.95	4.33
Grasslands/Herbaceous	37292.28	6.08
Perennial_Ice/Snow	1174.91	0.19
Evergreen_forest	464783.02	75.75
Shrubland	60501.85	9.86
Open_Water	10875.33	1.77
Transitional	5127.31	0.84
Woody_Wetlands	2620.26	0.43
Deciduous_Forest	2412.09	0.39
Pasture/Hay	1233.40	0.20
Commercial/Industrial/Transportation	1250.19	0.20
Emergent_Herbaceous_Wetlands	598.69	0.10
Fallow	0.22	0.00
Mixed_Forest	87.62	0.01
Low_Intensity_Residential	10.67	0.00
Urban/Recreational_Grasses	6.00	0.00
Acres =	613536.27	